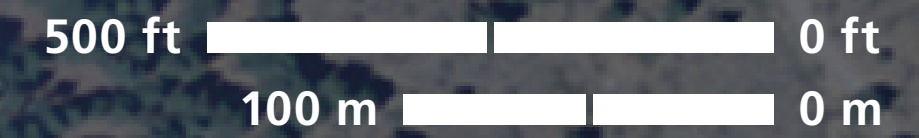


Davis Creek Regional Park



Trail Access Information

Trail	Nature Trail	Ophir Creek Trail	Discovery Trail	
Length	0.7 mi	0.7 mi	0.7 mi	
Grade				
Typical	6.5%	6.5%	6.5%	
Maximum	128 ft is 20–34%	128 ft is 20–34%	128 ft is 20–34%	
Cross Slope				
Typical	4.7%	4.7%	4.7%	
Maximum	105 ft is 15–30%	105 ft is 15–30%	105 ft is 15–30%	
Tread Width				
Typical	33 in	33 in	33 in	
Minimum	12 in	12 in	12 in	
Surface				
Type	Soil	Soil	Soil	
Firmness	0.18 in (worst 0.60 in)	0.18 in (worst 0.60 in)	0.18 in (worst 0.60 in)	
Stability	0.39 in (worst 0.59 in)	0.39 in (worst 0.59 in)	0.39 in (worst 0.59 in)	
Typical				
Minimum	Values ≤ 0.50 in correlate to surfaces per ASTM F1951		Values ≤ 1.00 in correlate to surfaces per ASTM F1951	

WARNING: Trail conditions may have changed since June 2009 when these trails were assessed. Temporary obstacles were not mapped. Standard maximum ramp grade is 8.3%.

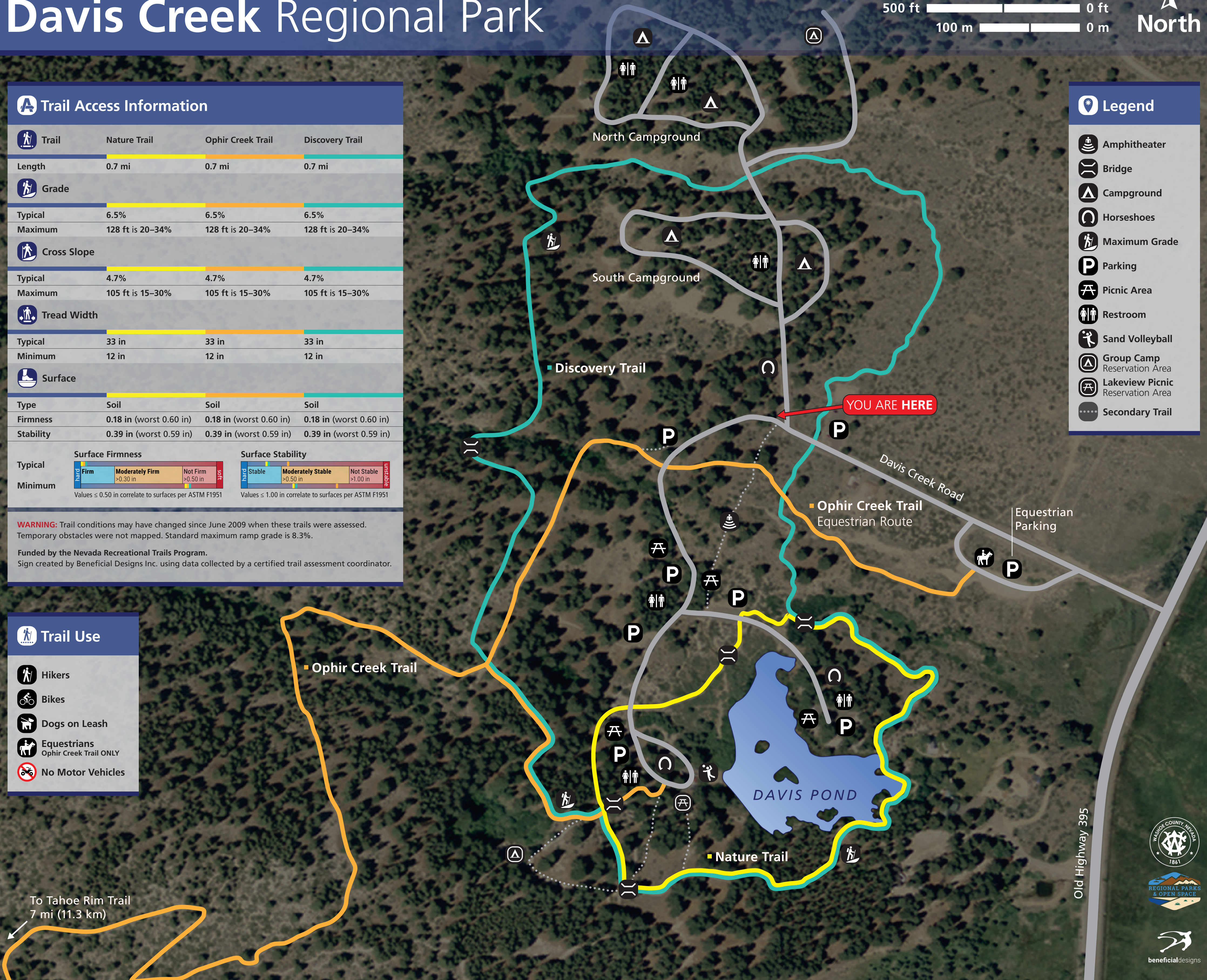
Funded by the Nevada Recreational Trails Program.
Sign created by Beneficial Designs Inc. using data collected by a certified trail assessment coordinator.

Trail Use

- Hikers
- Bikes
- Dogs on Leash
- Equestrians
Ophir Creek Trail ONLY
- No Motor Vehicles

Legend

- Amphitheater
- Bridge
- Campground
- Horseshoes
- Maximum Grade
- Parking
- Picnic Area
- Restroom
- Sand Volleyball
- Group Camp Reservation Area
- Lakeview Picnic Reservation Area
- Secondary Trail



To Tahoe Rim Trail
7 mi (11.3 km)

Old Highway 395

