

Fees and Insurance

- The fee for the Walk-up Tent Group Camp Area is \$100 per night. The fee for the RV Group Camp Area is \$125 per night. In addition, both areas require a \$100 refundable cleaning/security deposit.
- Pet Fee: \$1.00 per pet
- Additional vehicle: \$5.00 per vehicle

Facility users **MUST** furnish Washoe County with a *Liability Certificate* in the amount of \$500,000 naming Washoe County as an "Additional Insured" due two weeks prior to the event.

Reservations for group camping are taken one year in advance. For reservations contact the Parks Administration office at (775) 823-6501.

IMPORTANT CONTACTS

Davis Creek Park
(775) 849-0684

Sierra Fire
(775) 883-3535

Washoe County Sheriff
(775) 785-4629

Washoe County Regional Parks & Open Space

DAVIS CREEK
REGIONAL PARK

WALK-UP TENT GROUP
CAMP AREA

RV GROUP CAMP AREA

Washoe County Regional Parks & Open Space

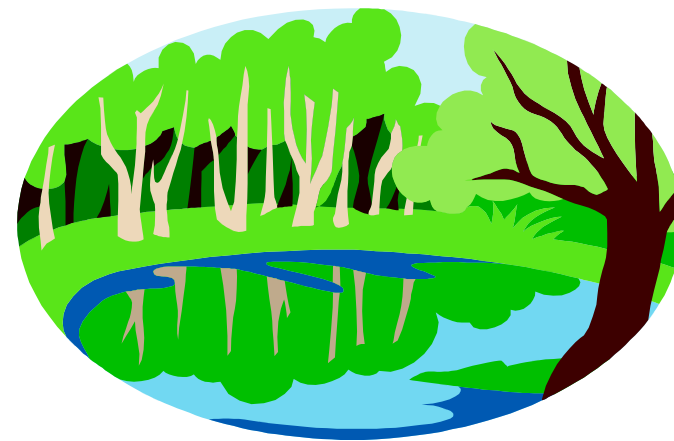
Parks Administration/
Reservations
2601 Plumas St.
Reno, NV 89509

Phone: (775) 823-6501
Fax: (775) 829-8014

www.washoecountyparks.com



Revised 4/09



Davis Creek Regional Park
25 Davis Creek Road
Washoe Valley, Nevada 89704

Park Ranger: (775) 849-0684

Group Picnic Reservations: (775) 823-6501

Walk-up Tent Group Camp Area

The area is a rustic forested area located in the southwest corner of the Day Use Area of the Park. It is approximately 100 yards up the hill from the parking area via wooden steps. This site will accommodate up to 100 people.

- The site is well shaded, providing several secluded areas for tents.
- The area is equipped with picnic tables, barbecue grill, group fire ring with benches, and a bear-proof food storage locker.
- Drinking water and a hose hook-up are available. Please bring a hose if you plan on having a fire.
- Restrooms for this area are located at the base of the hill near the parking area.
- No electricity is available.
- Showers are available in the main campground.
- Parking is limited to 15 vehicles per day. If you have more than 15 vehicles, the additional vehicle per day fee will apply.
- This camping area is located in the Day Use Area of the Park. The gate to this area is locked between the hours of 9:00 p.m. and 8:00 a.m. Closing time in the spring and fall is 7:00 p.m.
- No vehicles are permitted to enter or leave the area while the gate is closed.

- Day Use Area to handle any unexpected contingencies that may arise.

This campsite is not accessible to motor vehicles, and all food and camping gear must be carried up on foot.

RV Group Camp Area

The area is a secluded, forested drive-in site located in the northeast corner of the campground. The site will accommodate up to 100 people (tents, trailers and RVs).

- The site is equipped with picnic tables, large barbecue grill, long benches around the group fire ring, bear-proof food storage locker and locking dumpster.
- The area has drinking water with hose hook-up. Please bring a hose if you plan to have a fire.
- The area is equipped with vault-type restrooms with sinks and running water.
- Showers are located in the main campground.
- No electricity is available.
- All tents must be placed within 100 feet of the parking area.
- Parking is limited to 25 vehicles per day. If you have more than 25 vehicles, the additional vehicle per day fee will apply.

Group Site Guidelines

- Check-in time is 12:00 p.m. and Check-out is 12:00 p.m. The Park Ranger will meet you at your reserved area. Please have your copies of the reservation paperwork.
- Please do not disturb or remove any plants, animals, geological or historical features located in the Park.
- Keep all food, beverages and hygiene products in the bear-proof locker or locked in vehicles whenever the site is unattended, and at night.
- Fires are permitted in the barbecue grill (charcoal only) and in the fire ring. Please keep your fires small and under control at all times, and please put your fire out with water, not dirt!
- Do not gather firewood. Firewood is available from the Park Ranger for a nominal fee, or you can bring your own.
- Do not litter. Deposit all trash and garbage in the dumpster located in the parking area after each meal and before you go to bed.
- Keep pets leashed and under your control at all times.
- Quiet hours are from 10:00 p.m. to 7:00 a.m. Generators are not allowed during this time.
- Amplified music is prohibited at all times in all Washoe County Parks.

It is recommended that you view the sites before placing your reservation. Groups with special needs or requests should contact the Davis Creek Park Ranger in advance at (775) 849-0684.