



Rancho San Rafael Pollinator Garden



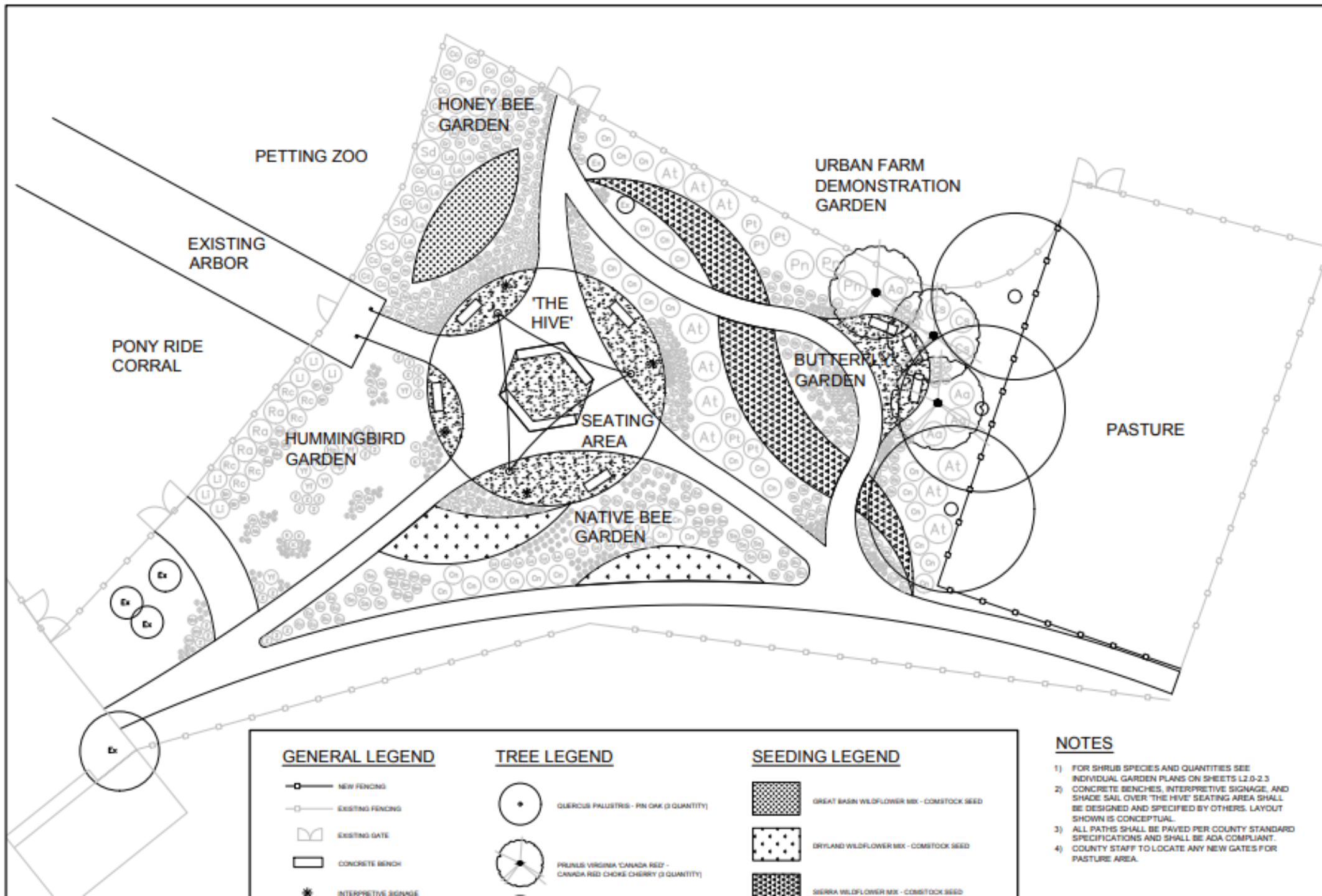


Why do we care about pollinators?

- According to the USDA, over 100 U.S. grown crops rely on pollinators. These include almonds, berries, non-citrus fruit trees, and melons! (www.usda.gov/pollinators)
- Pollinators provide about \$18 billion in additional revenue to crop production yearly! (www.usda.gov/pollinators)
- Plant and pollinator diversity are significantly related! (Heithaus 1974, Moldenke 1975, del Moral and Standley 1979)
- (They're cool!)



Courtesy of thisisreno.com



- ### PLANTING NOTES
1. CONTRACTOR SHALL BE RESPONSIBLE FOR MAKING THEMSELVES FAMILIAR WITH ALL UNDERGROUND UTILITIES, PIPING AND STRUCTURES PRIOR TO COMMENCING WORK. CONTRACTOR SHALL TAKE SOLE RESPONSIBILITY FOR ANY COST INCURRED DUE TO DAMAGE OF SAID UTILITIES.
 2. CONTRACTOR SHALL BE RESPONSIBLE FOR ANY COORDINATION WITH OTHER SUBCONTRACTORS AS REQUIRED TO ACCOMPLISH PLANTING OPERATIONS.
 3. THE CONTRACTOR SHALL BE RESPONSIBLE TO COORDINATE ALL LANDSCAPE WORK WITH IRRIGATION WORK SUCH THAT IRRIGATION COMPONENTS DO NOT INTERFERE WITH PLANTINGS AS INDICATED ON PLAN.
 4. PLANT SCHEDULE COUNTS ARE FOR THE CONTRACTOR'S CONVENIENCE ONLY. THE CONTRACTOR SHALL BE RESPONSIBLE FOR PROVIDING AND INSTALLING ALL PLANTS AS GRAPHICALLY INDICATED ON PLAN.
 5. ALL PLANT MATERIAL SHALL BE APPROVED BY OWNER PRIOR TO PLANTING. THE CONTRACTOR SHALL BE RESPONSIBLE FOR NOTIFICATION OF THE OWNER FOR PLANT MATERIAL REVIEW AND APPROVAL. ANY MATERIAL DEEMED NOT ACCEPTABLE SHALL BE REMOVED FROM THE SITE IMMEDIATELY AND REPLACED WITH ACCEPTABLE MATERIAL, WITHOUT COST TO THE OWNER.
 6. SUBSTITUTION OF PLANT MATERIALS SHALL REQUIRE WRITTEN APPROVAL IN ADVANCE BY OWNER.
 7. ALL PLANTING AREAS SHALL BE MULCHED WITH MATERIALS AS APPROVED BY THE COUNTY.

WASHOE COUNTY
POLLINATOR GARDEN

URBAN
ECOLOGY
SOLUTIONS

AUG. 6, 2021

- ### NOTES
- 1) FOR SHRUB SPECIES AND QUANTITIES SEE INDIVIDUAL GARDEN PLANS ON SHEETS L2.0-2.3
 - 2) CONCRETE BENCHES, INTERPRETIVE SIGNAGE, AND SHADE SAIL OVER 'THE HIVE' SEATING AREA SHALL BE DESIGNED AND SPECIFIED BY OTHERS. LAYOUT SHOWN IS CONCEPTUAL.
 - 3) ALL PATHS SHALL BE PAVED PER COUNTY STANDARD SPECIFICATIONS AND SHALL BE ADA COMPLIANT.
 - 4) COUNTY STAFF TO LOCATE ANY NEW GATES FOR PASTURE AREA.



Achieving Integrated Vegetation Management Goals

Reestablish stable perennial native or adaptive plant communities, with a preference for native plants

- Revegetating with native/adaptive wildflower species to create perennial plant communities that attract and interact with pollinators for future success
- Including a native bee garden to promote pollination of native plants

Prevent, minimize, and reduce noxious and invasive weeds

- Utilizing native plant species to establish resilient and productive vegetation communities

Revegetate disturbed and/or post-fire sites where remaining plant communities cannot provide ecosystem services

- Creating perennial plant communities in a disturbed former pasture site that offers benefits to local pollinators



Trees planted at
site



Tilling to prepare
seed beds



Seed bed and
walkway layout



Trail construction
with Tesla
volunteers



Plants from
moana nursery



Volunteers installing
plants for the
Honeybee garden

A photograph of a garden installation. In the foreground, there are several purple flowers with green foliage. To the left, there are several succulent-like plants in circular black plastic mulch. A black irrigation line runs across the garden. The background features a large area of red mulch and a white picket fence. A semi-transparent circular overlay is on the right side of the image, containing the text.

Completed
Honeybee garden
installation

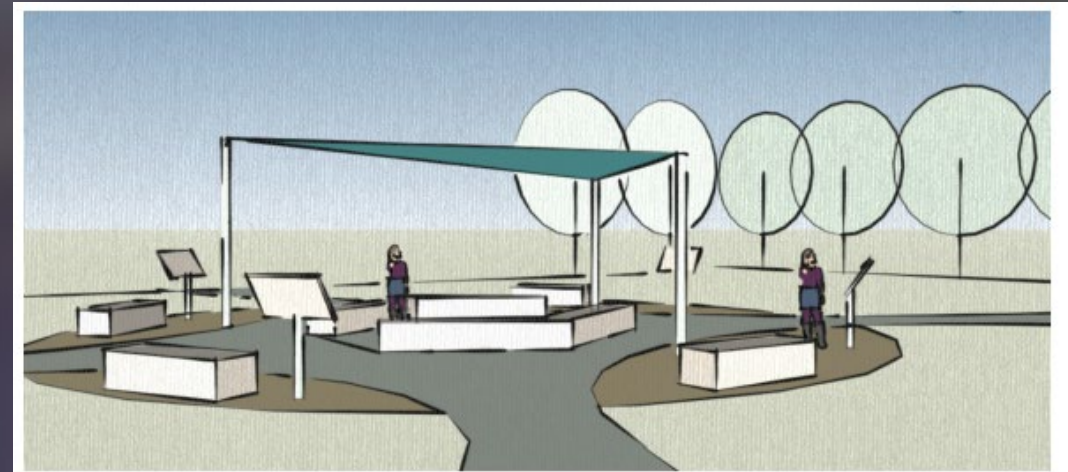


Visitation by
pollinators!



Enhancement of open space

- Space for community engagement with natural resources
- Facilities for social and educational events
- Attracts visitors to the Rancho San Rafael park and brings attention to other park spaces such as the Urban Farm Demonstration Garden



'The Hive' Outdoor Classroom

