

9.11.23

# Nevada Cares Campus





# Nevada Cares Campus Program Model & Operations

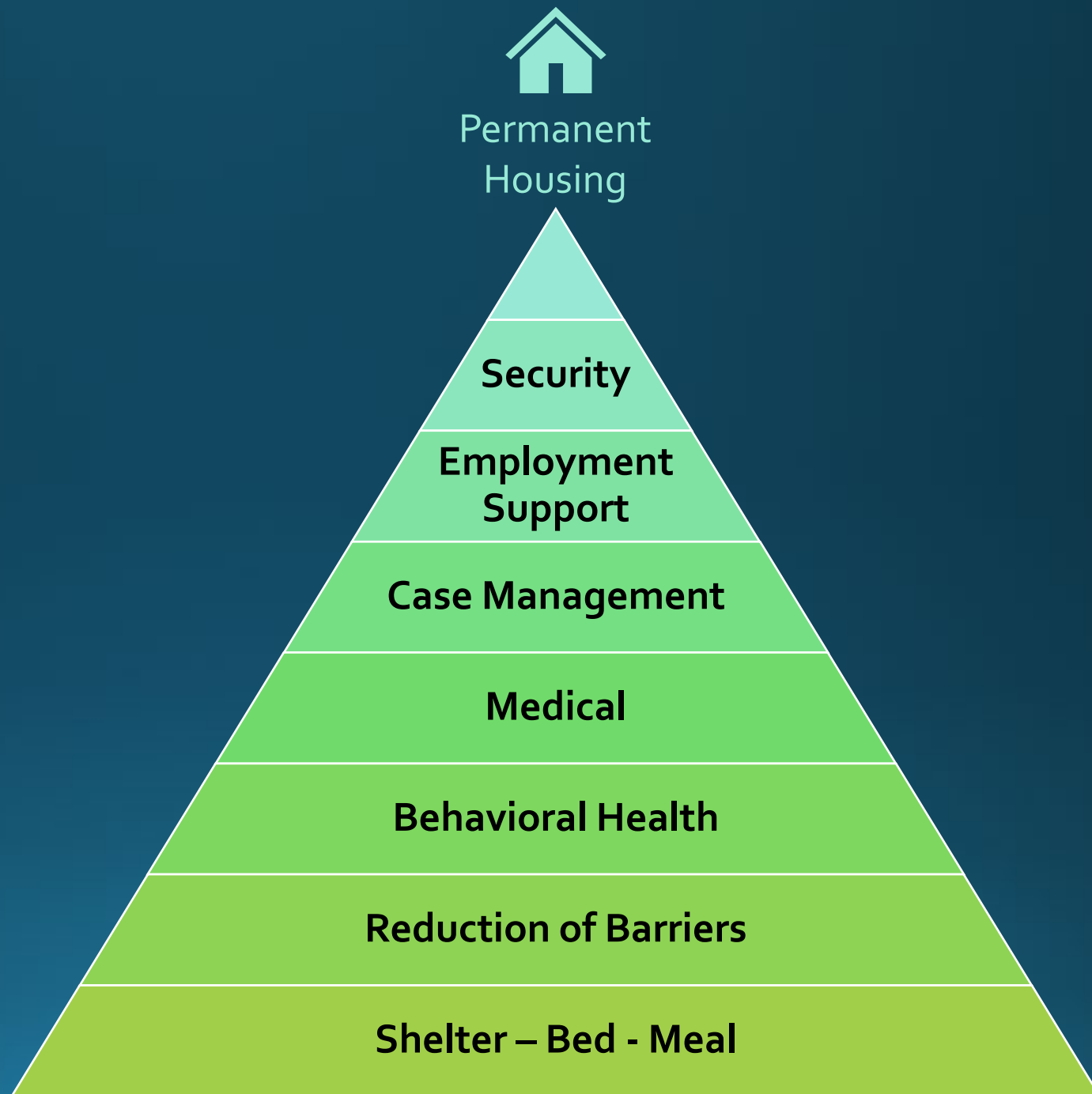


# Cares Campus

## Housing First and Services

---

**Focus on  
Permanent  
Housing**





# Cares Campus

**Cares Campus  
addresses common  
barriers.**

---

**Cares Campus is the  
only option for many of  
our most vulnerable.**

Property/  
Partners /  
Pets

No Sobriety  
Requirement

No Fees,  
Rent or  
Income

No ID  
Requirement

No  
Background  
or Criminal  
History Check

No Prior  
Program  
Completion  
Requirement





# Cares Campus Priorities



STAFFING &  
TRAINING



SAFETY &  
SECURITY



FACILITY &  
CONSTRUCTION



PARTNERSHIP  
DEVELOPMENT



# Nevada Cares Campus Development - Progress



## Operations

- Increased shelter capacity
- Appropriate staffing ratios
- Safety and security
- Behavioral Health Support
- Medical support
- Partnerships with regional service providers



## Construction

- Phase 2: Sprung Improvements & Shower/Restroom/Laundry Buildings
- Phase 3: Resource Center and Welcome Center
  - Intake, Security, Case Management, Training, Behavioral Health, Dining Room, Admin Offices, Winter Emergency Overflow
- Phase 4: Supportive Housing
- Safe Camp
- Line Drive Housing Project

\*Items in gold are complete or in process



# Nevada Cares Campus Newsletter

## Connect with Cares

JULY & AUGUST 2023 | SUMMER EDITION



HOUSING & HOMELESS SERVICES

## NEVADA CARES CAMPUS WASHOE COUNTY

Hello, from the staff at Washoe County Housing and Homeless Services and Nevada Cares Campus!

We would like to welcome you and express our commitment to service all participants and staff. We are a housing-focused Campus, and it is important the services we provide support your pursuit of housing goals. Through these monthly newsletters, updates will be provided about the current state and future changes at the Campus, as well as scheduled activities, construction and more! If additional changes take place, these will be communicated through Campus staff and case managers. We will stay connected!

### Join the new Wellness Groups on Campus!



#### Dialectical Behavior Therapy (DBT) Skills Group

Every Friday  
10:00am-11:00am

#### Wellness Groups

Every Monday, Thursday, Friday, and  
Sunday (except holidays)  
10:00am-11:00am

#### Mindfulness Through Music

Every Tuesday  
5:00pm-6:00pm

#### Questions?

Ask a Mental Health Counselor  
or stop by our office, 8:00am-  
6:00pm seven days a week!

### We will meet you where you are at

After being hospitalized for one month and working towards housing as hard as he could, we had a participant who also had the opportunity to reconnect with his son *after 15 years of no contact*.

When the participant first sat down with their case manager the participant was motivated and ready to get back to work. Within a week he had two jobs, had all of his documents and knew exactly what he needed to do to obtain housing. After a few weeks in the emergency shelter, he was able to get in touch with his son and after several conversations and with the Cares Campus staff, his son agreed to have the participant come to Pennsylvania to live with him and meet his two-year-old granddaughter.

The participant stated he would not have been able to reconnect with his son after all these years if he did not have Cares Campus and the support from both VOA and Washoe County Staff. This participant is grateful he has reconnected with his son and that he is now part of his granddaughters' life. The staff expresses a warm congratulations to the participant and his family.

To read additional success stories please visit [www.washoecounty.gov/homeless](http://www.washoecounty.gov/homeless)

### Schedule of Partners on Campus

Monday	Tuesday	Wednesday	Thursday	Friday
8am - 4:30pm MedTrust	8am - 3pm Food Bank of Northern Nevada	8am - 4:30pm MedTrust	8am - 4pm Food Bank of Northern Nevada	8am - 4:30pm MedTrust
9am - 11am WellCare Health	8am - 4:30pm MedTrust	9am - 12pm Mobile One Docs	8am - 4:30pm MedTrust	9am - 11am WellCare Health
9am - 12pm Mobile One Docs	9am - 11am WellCare Health	10am - 11am Vitality	9am - 11am WellCare Health	
10am - 12pm Mill Street Care Center	9am - 12pm Anthem Outreach	12:30pm - 3pm Silver Summit Outreach	9am - 11:30am Reno Housing Authority	
11am - 1pm Molina Healthcare	9am - 12pm Mobile One Docs	1pm - 3pm HPN Outreach	9am - 12pm Mobile One Docs	
1pm - 3pm VA Outreach	10am - 12pm Mill Street Care Center	1pm - 2pm Donation van Catholic Charities of Northern Nevada	9am - 12pm Anthem Outreach	
6pm - 7pm Alcoholics Anonymous Group	3pm - 4:30pm Bristlecone Recovery Center	1pm - 3pm DETR		

## Connect with Cares

JULY & AUGUST 2023 | SUMMER EDITION



HOUSING & HOMELESS SERVICES

### Construction Update

Construction during July and August include the continuing construction of the Resource Center and the construction of D dorm.

Thank you for your patience and understanding. Find the *temporary* Campus map and entrance below.

### Temporary Construction Map

Sections of the Campus will continue to be closed or relocated to new temporary buildings during construction. The current temporary buildings include:



- Entrance of Campus
- The Welcome Center, Security, and Intake
- Mail located at the Entrance of Campus
- Bathrooms, showers, and laundry
- Case Management, Behavioral Health, and Partner Services
- Meals, day use area and cooling area
- Property Storage
- Medical
- Smoking Area

We appreciate your patience as we work to improve the Campus!

Stay connected at [www.washoecounty.gov/homeless](http://www.washoecounty.gov/homeless)

### In mid-August the new cubbies are opening in the D Dorm

In addition to single beds and bunk beds, these cubby units will prepare participants to live independently and learn how to manage an individual space.

#### Questions?

Connect with your case manager to see if you meet the criteria for a cubby.

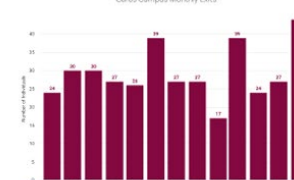
### Did you know?

#### Record number of exits to permanent housing!

Individuals moved into  
permanent housing during  
June =

44

Cares Campus Monthly Exits



The Cares Campus team will  
continue to meet you where  
you are at.

In partnership with Volunteers of America,  
Allied Universal, and Karma Box

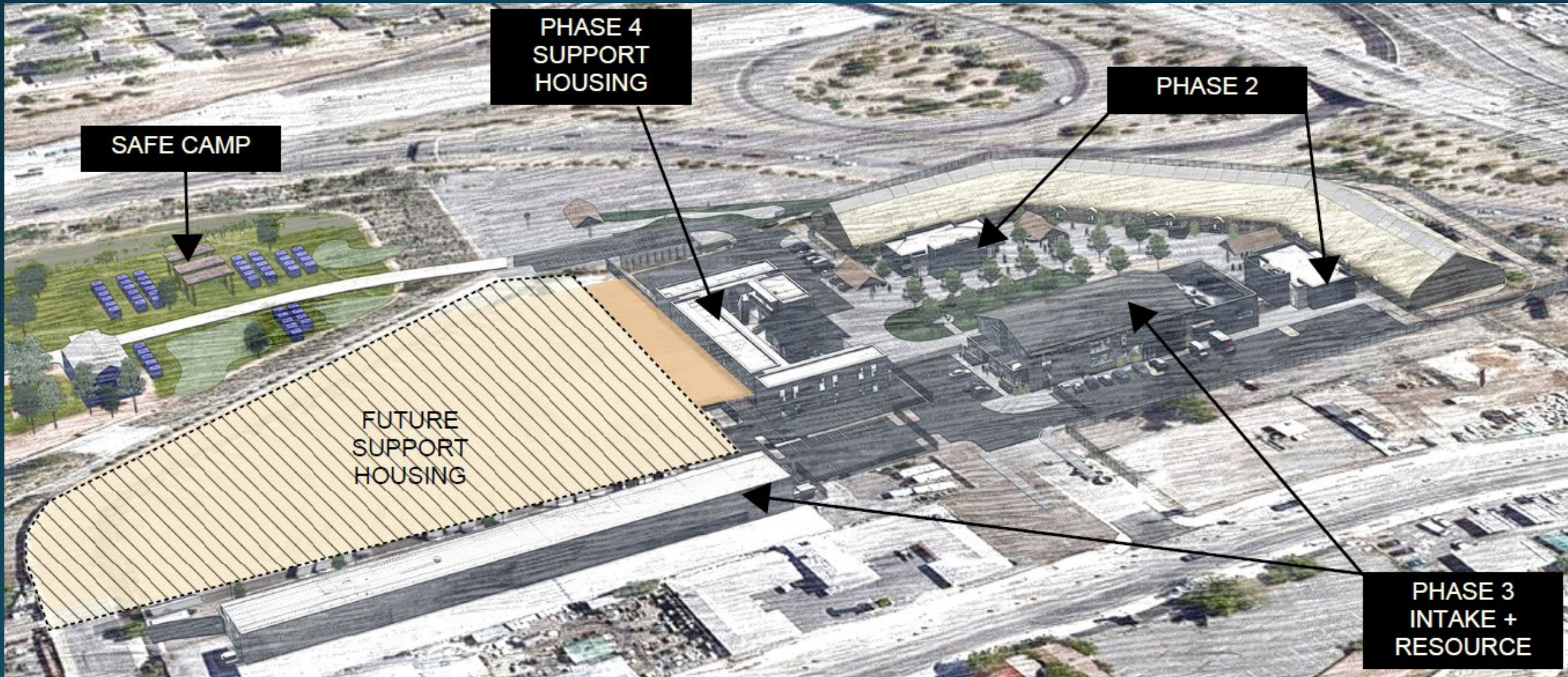
# Nevada Cares Campus Construction







# Nevada Cares Campus Development

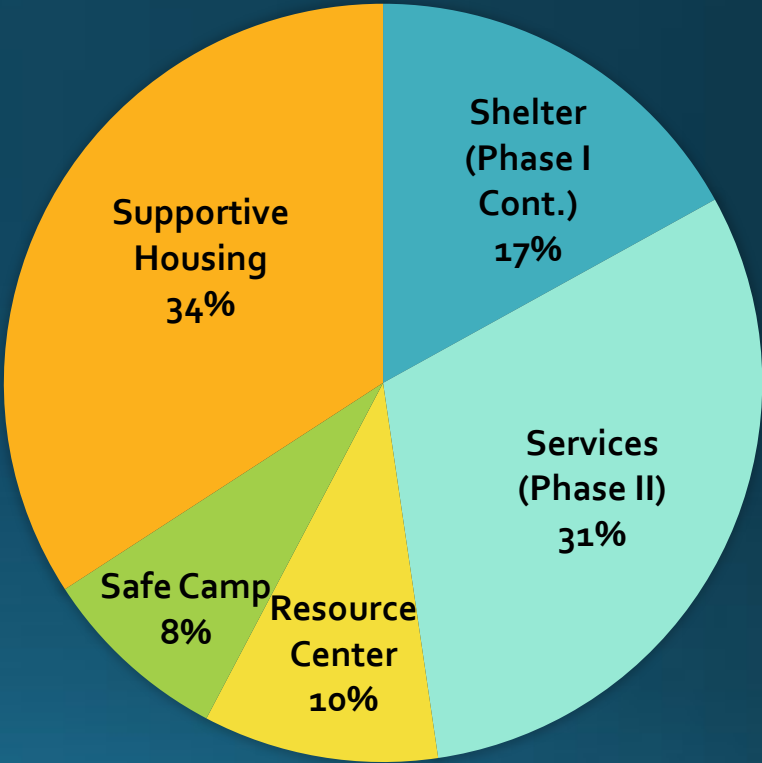




# Nevada Cares Campus Development - Capital Budget



Supportive Housing Program	\$17,035,809
Services Building: Training, Case Management & Office Space, Intake Area, Nurse Station, Cafeteria, Warming Kitchen	\$17,043,892
Restrooms/Shower/Laundry, Sprung Improvements	\$12,148,912
Site Improvements (utilities, paving, fencing, parking, green space, pet facilities, shade)	\$6,607,326
Gov Bowl Infrastructure & Safe Camp	\$5,245,000
RHA Property Purchase	\$5,500,000
Resource Center and Maintenance Area	\$4,761,355
Design	\$4,203,439
Site Utilities	\$1,829,155
FF&E	\$1,750,000
Demo of Existing Buildings / Fuel Tank Remediation	\$1,163,348
Permitting, Sewer Connection, Water Fees and Environmental Review	\$1,090,000
Professional services	\$350,000
<b>TOTAL Estimate</b>	<b>\$78,733,236</b>



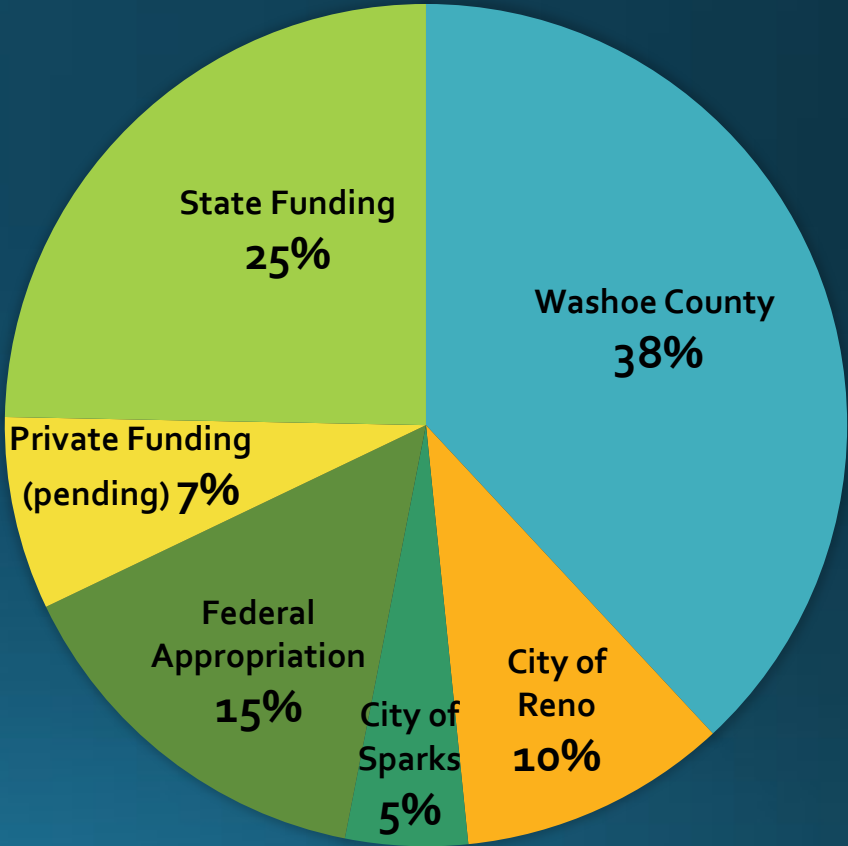
# Nevada Cares Campus Development - Capital Budget



Construction Budget	
Total Budget	\$78.7 million

Identified Funding	
Interlocal Agreement Cost Share (pie chart)	\$38 million
Home Means Nevada Funding	\$21.9 million
Federal Appropriation	\$12 million
RHA Property Purchase	\$5.2 million
Fundraising Capital Campaign	\$1.6 million

Pending Funding	
*Fundraising Capital Campaign	







# Nevada Cares Campus—Safe Camp (Temporary Location)



July 2020



2022





# Nevada Cares Campus—Safe Camp







# Nevada Cares Campus

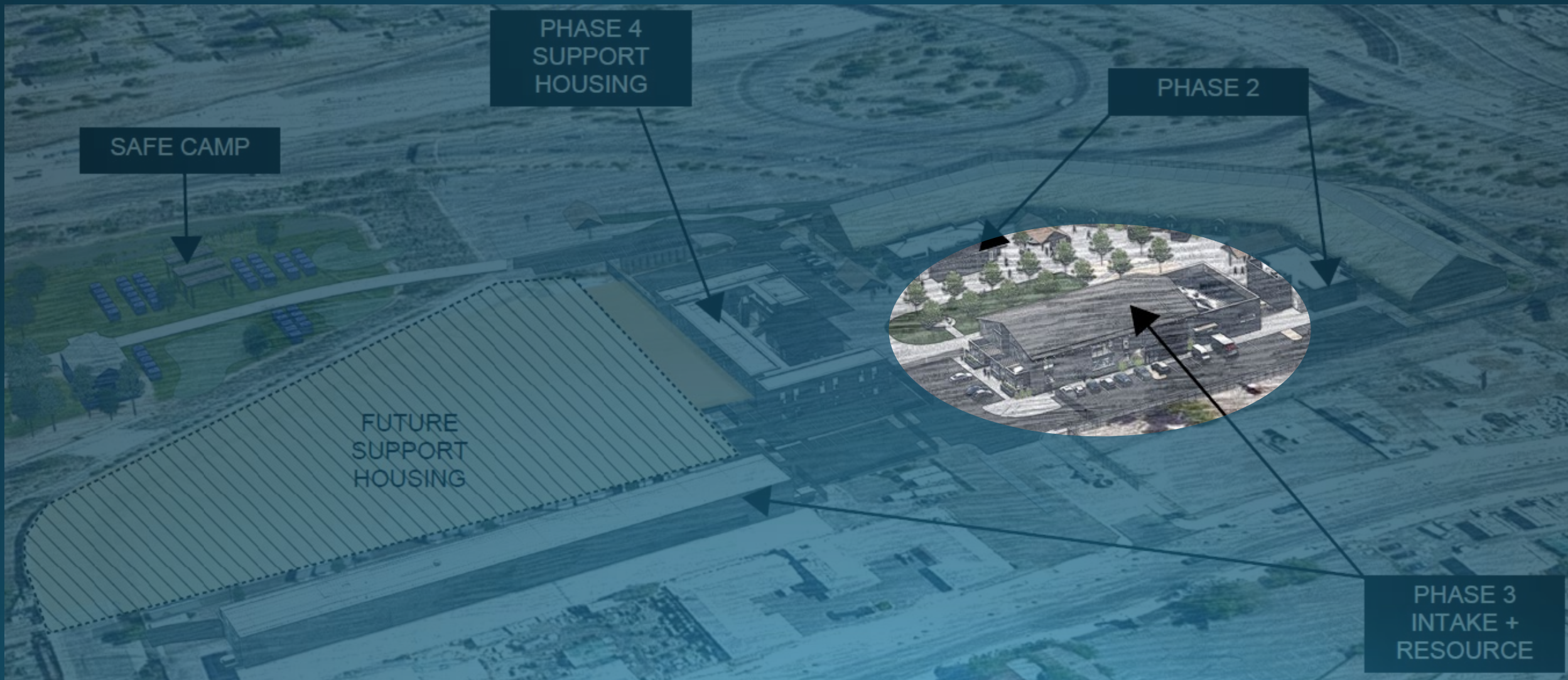






# Nevada Cares Campus—Phase III

**Welcome Center / Case Management & Therapy / Staff Offices / Dining Hall**







# Cares Campus – Welcome Center / Case Management & Therapy / Staff Offices / Dining Hall



First Floor



Second Floor







# Nevada Cares Campus







# Nevada Cares Campus

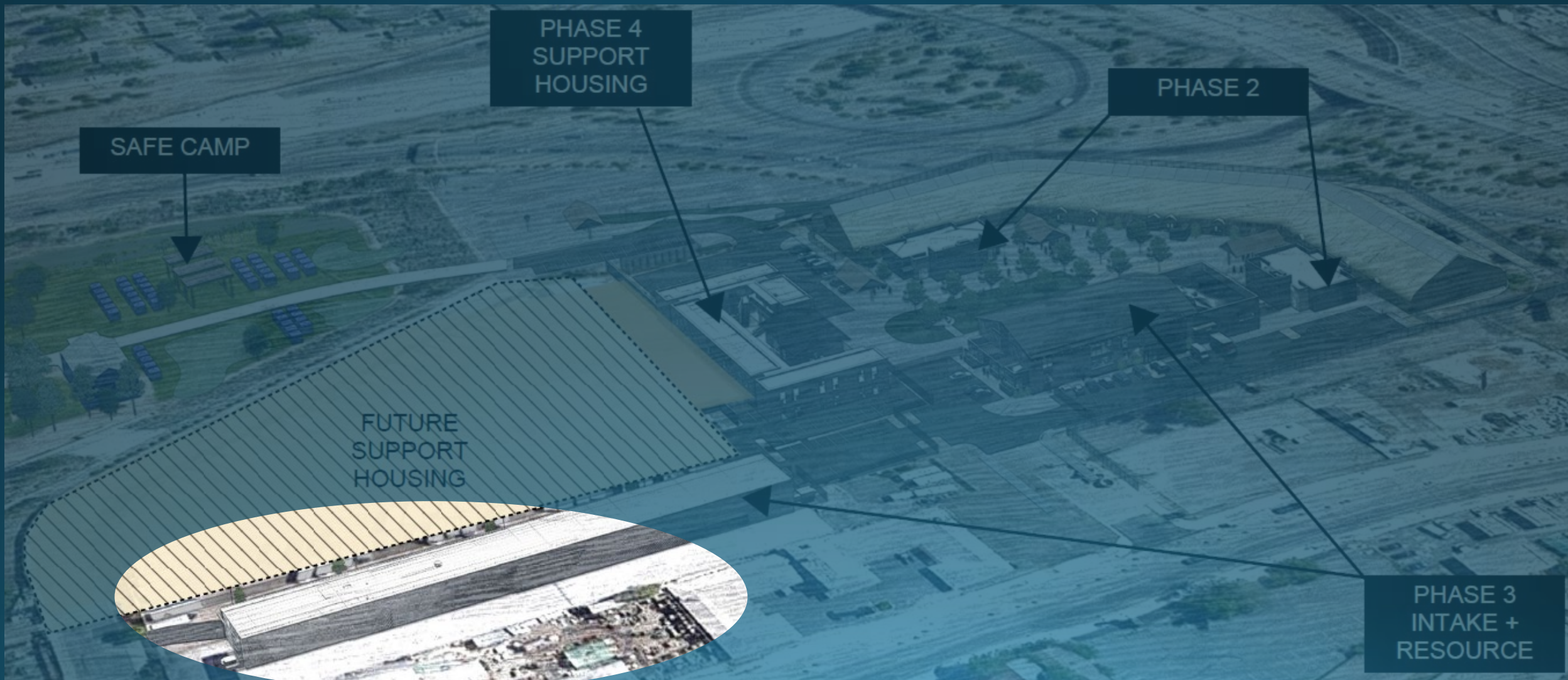






# Nevada Cares Campus—Phase III

## Resource Center







# Nevada Cares Campus – Resource Center







## Nevada Cares Campus – Resource Center

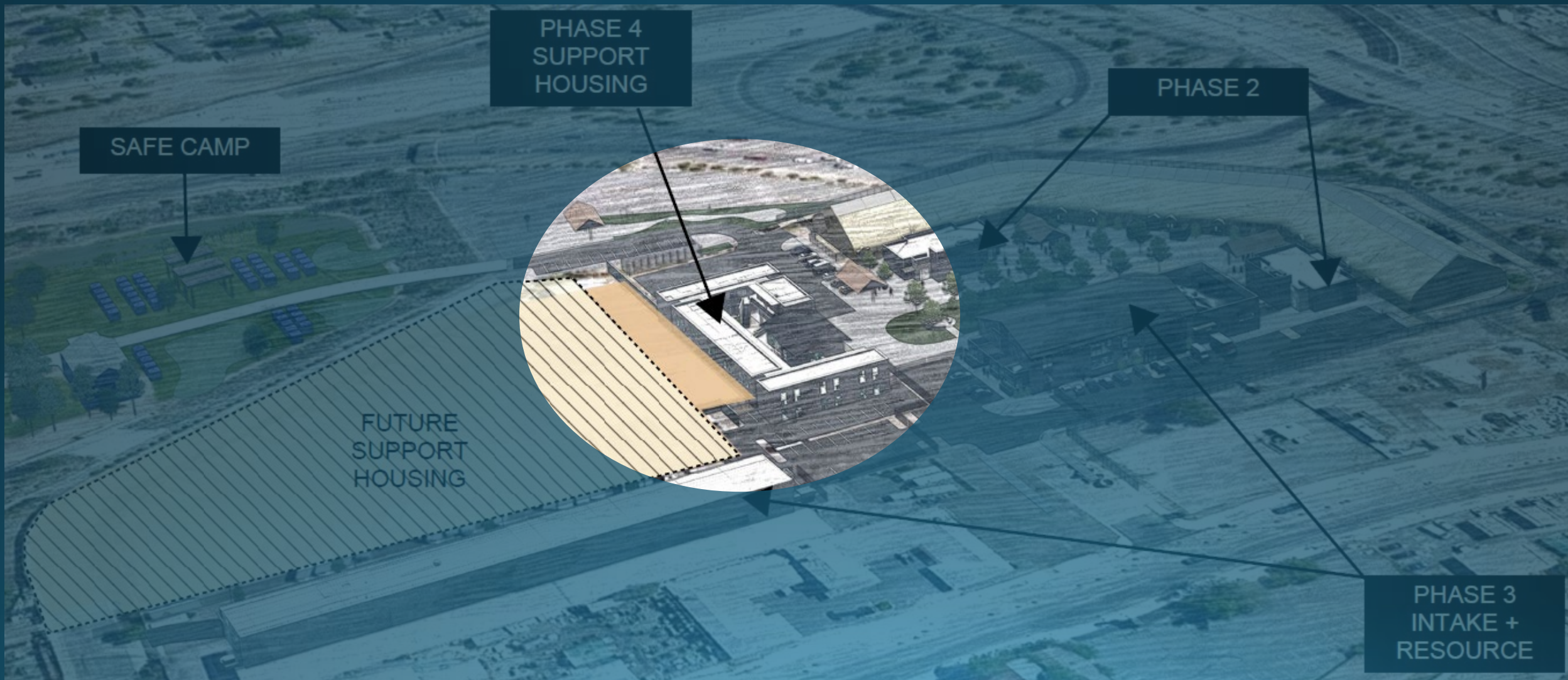






# Cares Campus—Phase IV

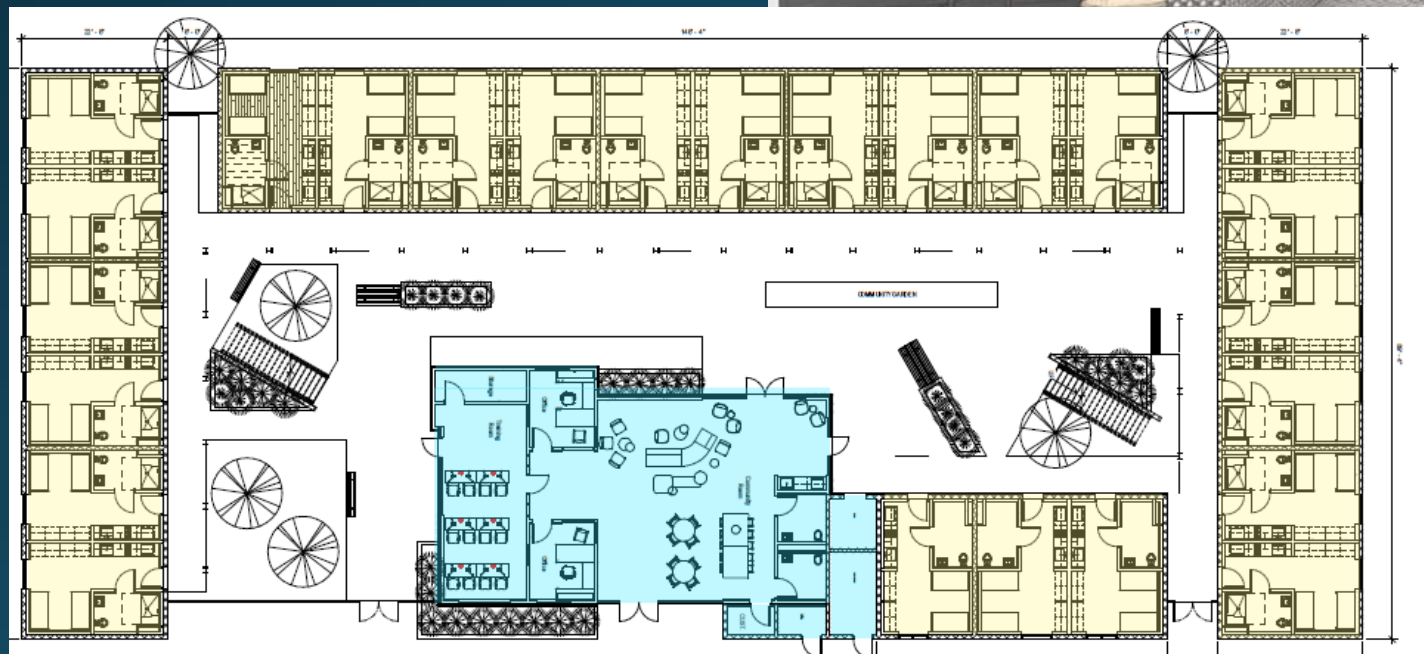
## Supportive Housing







## Cares Campus – Supportive Housing







## Cares Campus – Supportive Housing





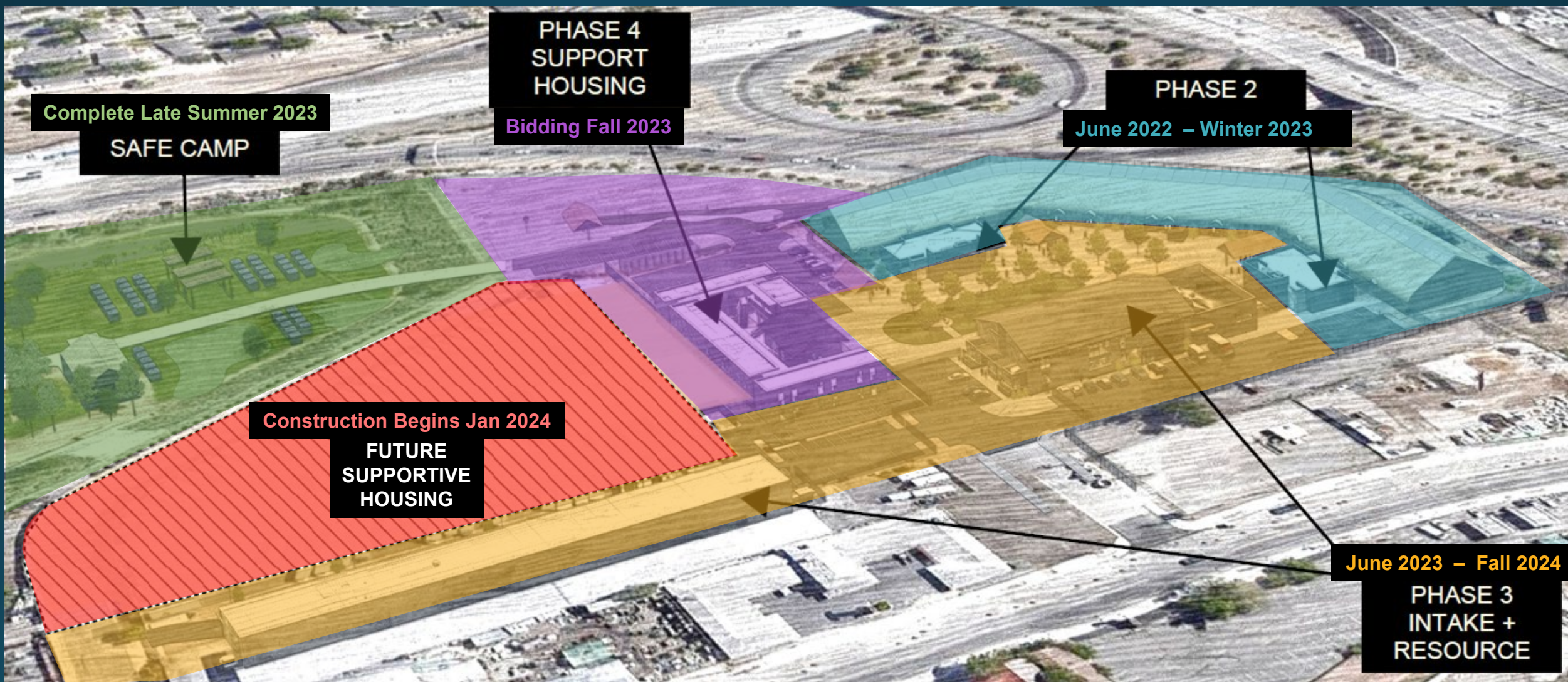
# Nevada Cares Campus







# Nevada Cares Campus—Construction Timeline





# Nevada Cares Campus Outcomes

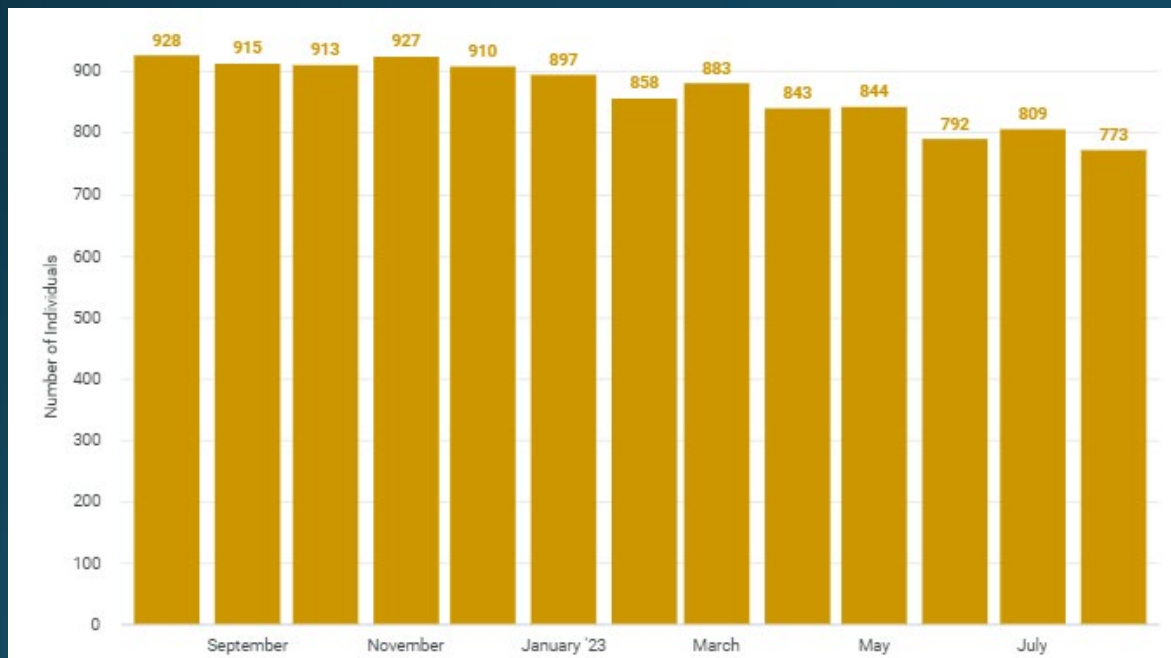


# Nevada Cares Campus

## Unique Clients Served

July 1, 2022 – June 30, 2023

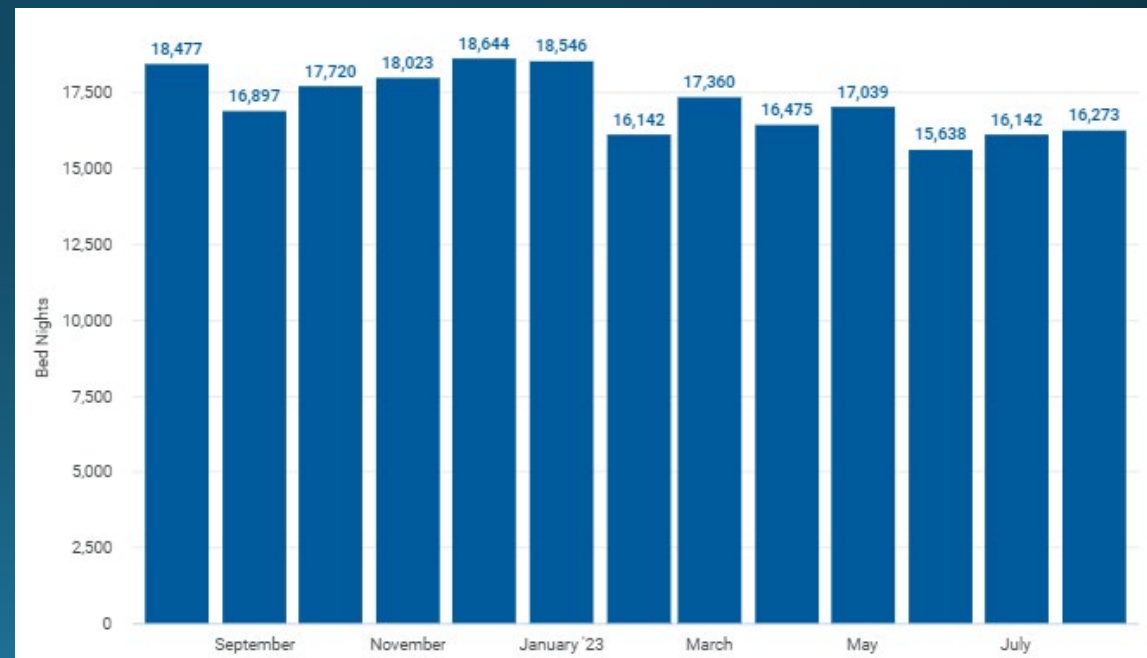
**2,795**



## Total Bed nights

July 1, 2022 – June 30, 2023

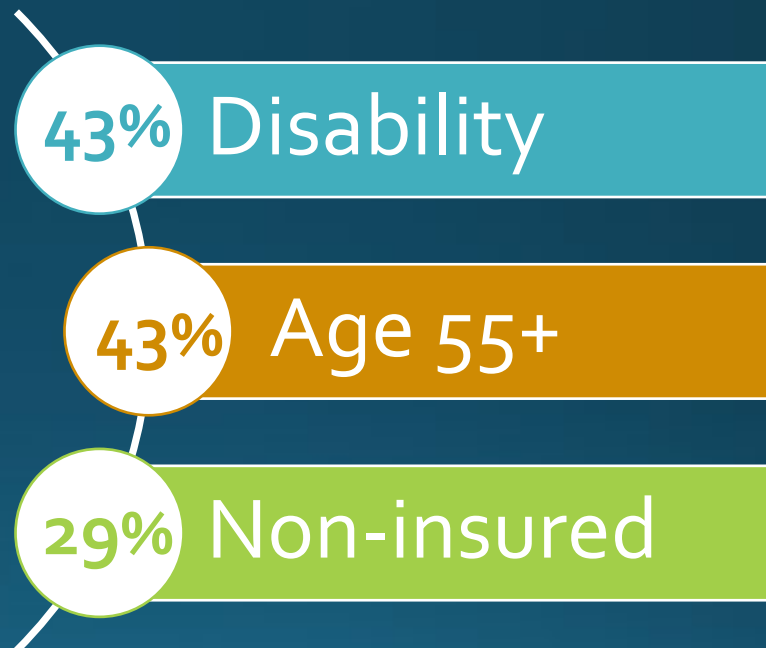
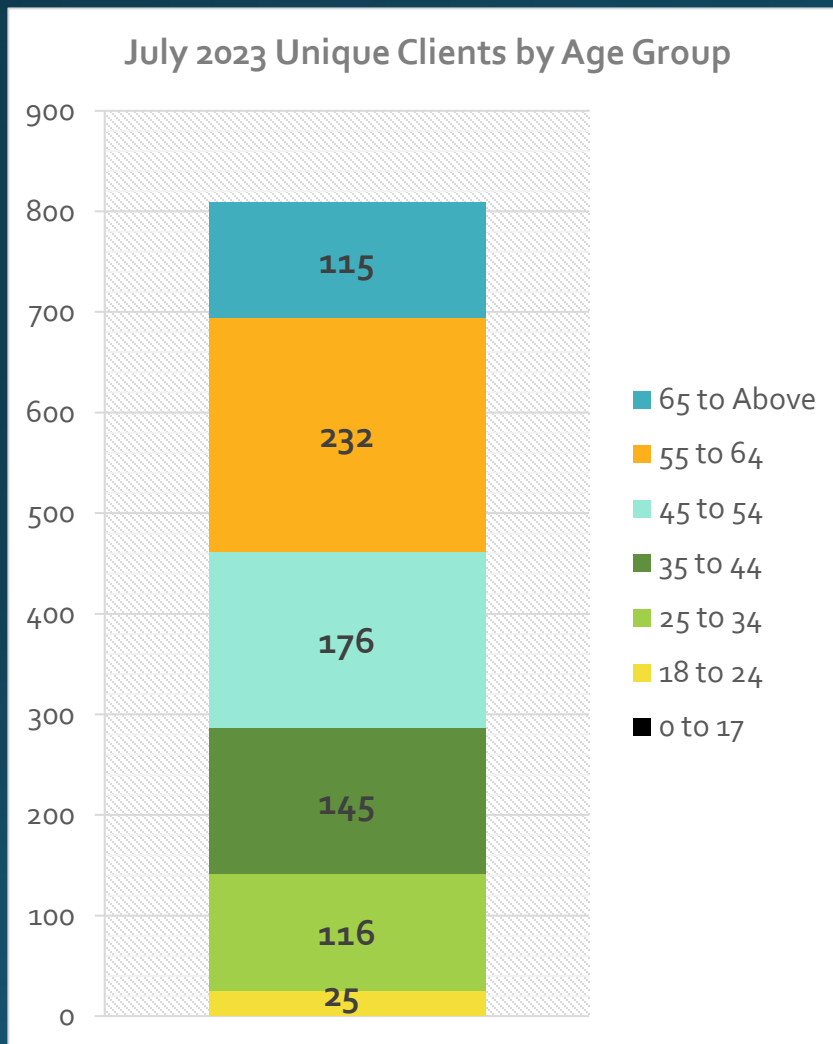
**209,736**







# Nevada Cares Campus





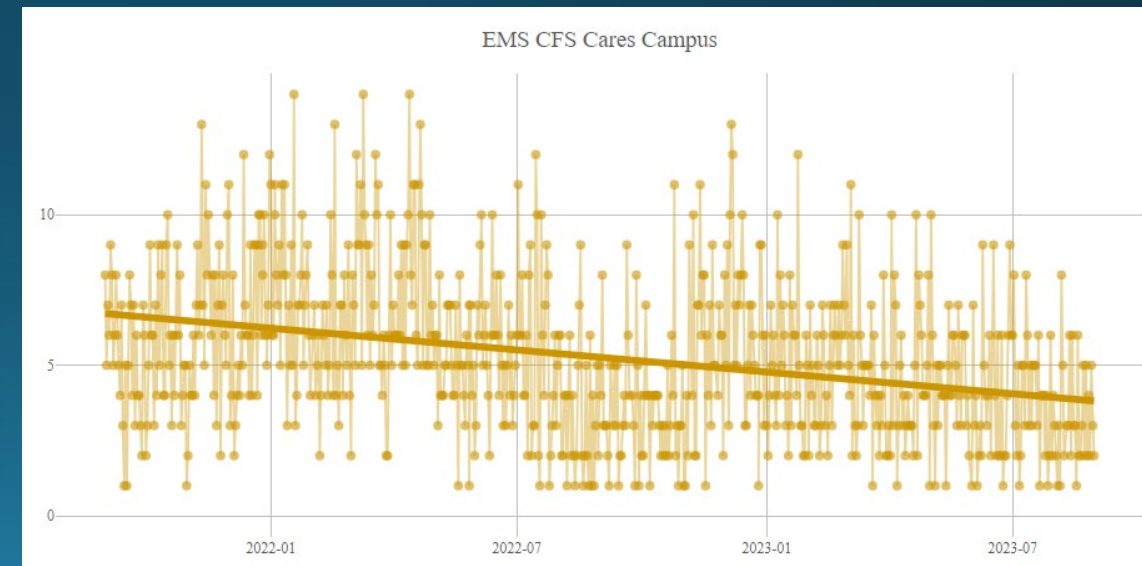
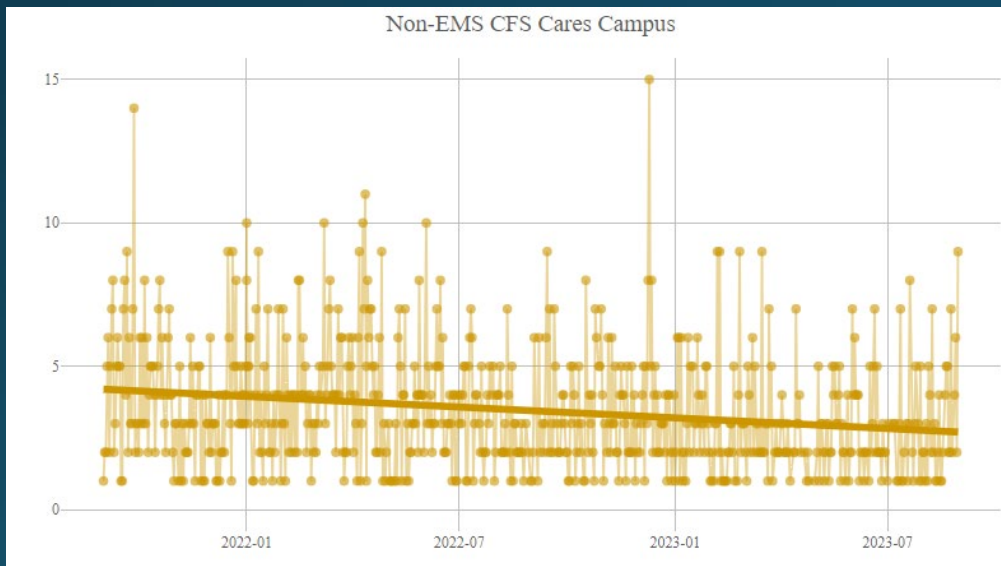
# Nevada Cares Campus Outcomes— Reliance on Regional Emergency Services



Decrease  
Law Enforcement  
Response



Decrease  
Emergency Medical  
Services Response





# Nevada Cares Campus Outcomes— Partnerships with Service Providers



Increased number of  
Partnerships with the  
Campus from 13 to  
30 since May 2022



Organized effort in  
our community leads  
to improved  
coordination and  
efficiency in  
providing services

Agreements  
in place or  
in progress

- Anthem
- Bristlecone
- Catholic Charities of Northern Nevada
- City of Reno - Clean and Safe Team
- DETR – Department of Employment, Training, and Rehabilitation
- Downtown Reno Partnership
- Eddy House
- Food Bank of Northern Nevada
- Health Plan of Nevada/United Healthcare
- Karma Box Project – Street Outreach
- Liberty Dental
- Mobile One Docs
- Molina
- My Journey Home
- NNAMHS – Northern Nevada Adult Mental Health Services
- Northern Nevada Behavioral Health
- Northern Nevada HOPES
- Reno Behavioral Health
- Reno Housing Authority
- Reno MOST
- Reno Sparks Gospel Mission
- RISE
- Sierra Regional Center
- Silver Summit
- VOA Restart
- Veterans Administration
- Vitality Unlimited
- Washoe County Health District
- Washoe County MOST
- WC Health



# National Trends

◆ WSJ NEWS EXCLUSIVE | U.S.

**More Americans Are Ending Up Homeless—at a Record Rate**

**Denver's homeless population grew 31.7% in one year, annual survey finds**

**New Point-in-Time Count reports 36% increase in Spokane County's homeless population**

**Homelessness surges in D.C. suburbs, amid national crisis, study finds**

The population of homeless in suburban counties surrounding D.C. increased 26 percent over last year, the Metropolitan Washington Council of Governments said Wednesday.

**Homelessness Rises 20% in Multnomah County, Annual Count Shows**

**City of Los Angeles sees a 10% increase in its homeless population**

About 46,260 people are homeless on any given night in LA, says the LAHSA homeless count

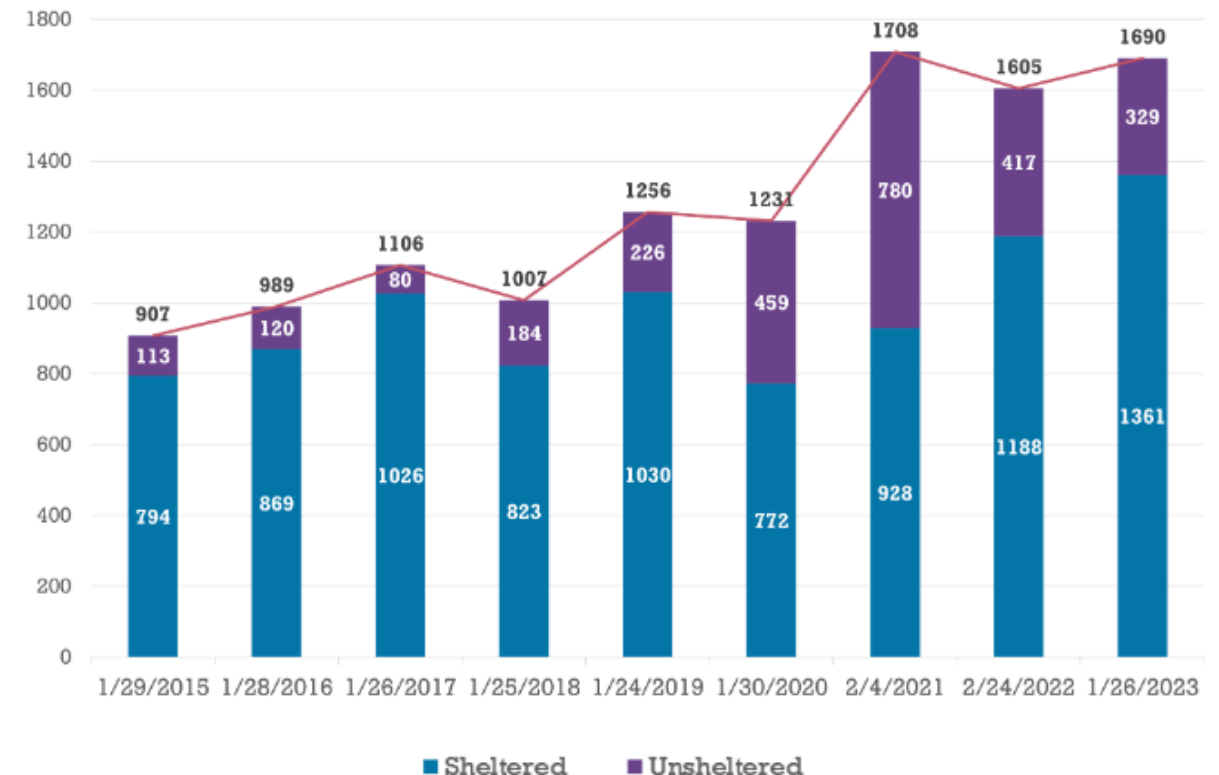


# Nevada Cares Campus Outcomes— Point in Time Count



Decrease of  
Unsheltered  
individuals:  
46.5% in 2022  
21% in 2023

The graph below outlines sheltered and unsheltered data from  
2015-2023

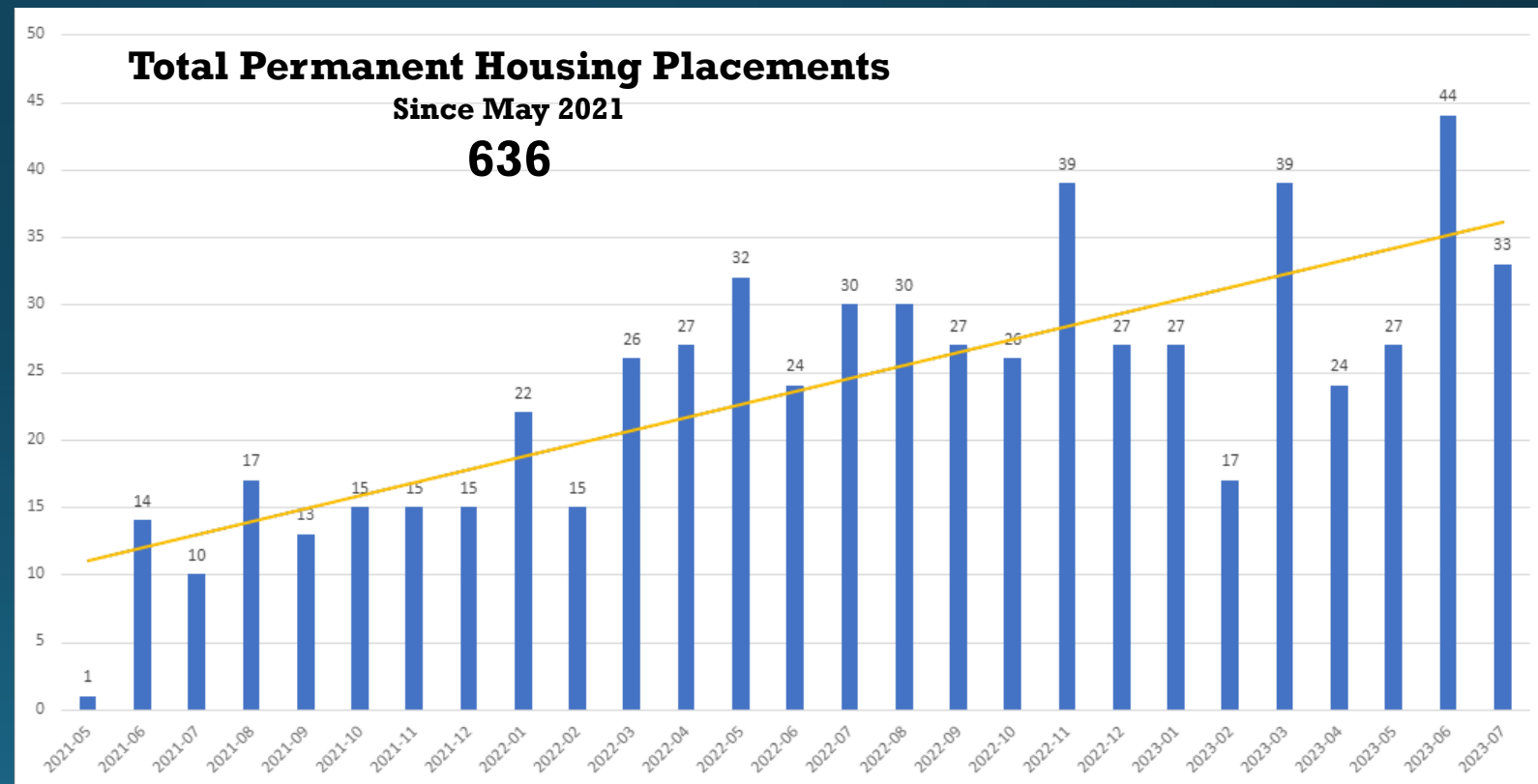




# Nevada Cares Campus Outcomes— Permanent Housing Placements



Tripled  
Permanent  
Housing  
Placements



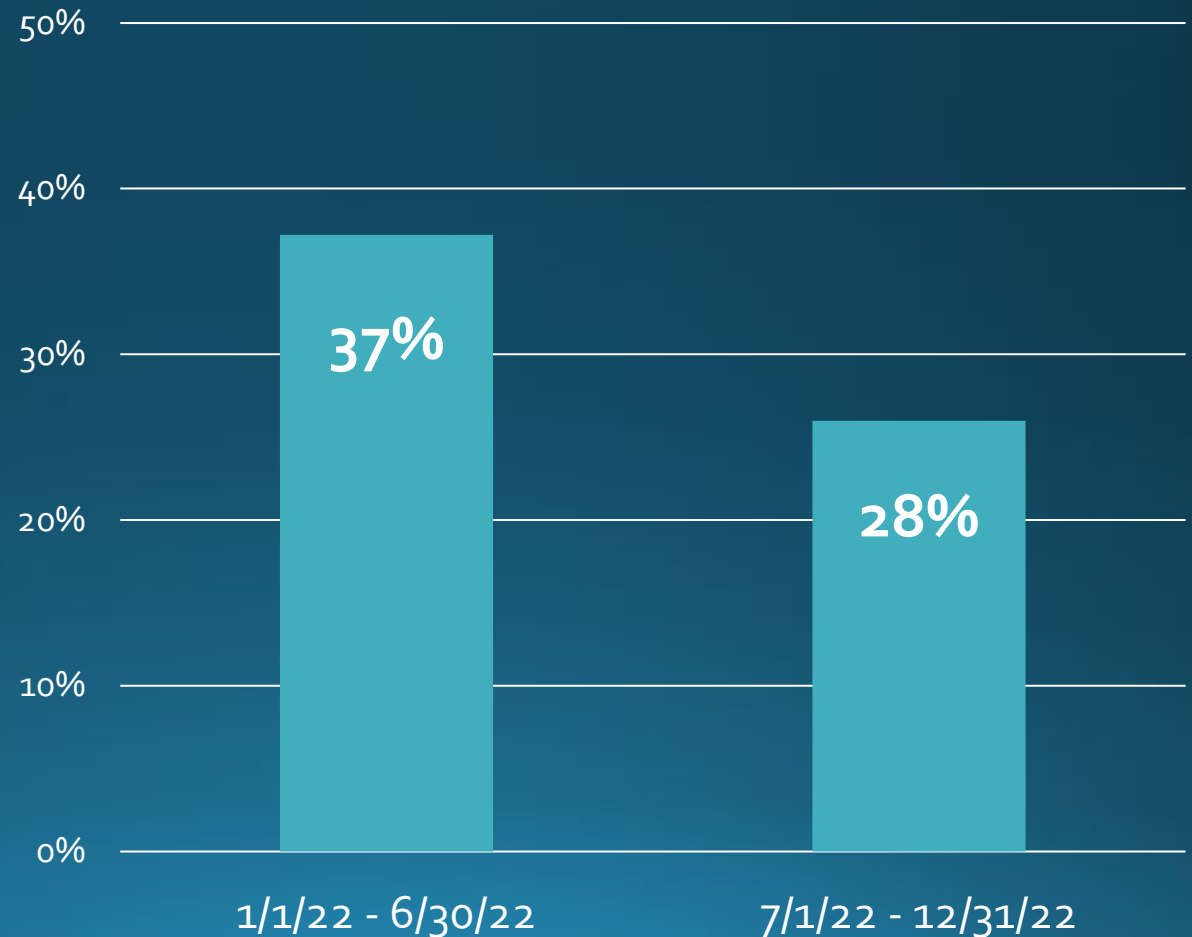


# Nevada Cares Campus Outcomes— Recidivism Rate



Decreased  
Recidivism  
Rate

% of Individuals that have  
returned to homelessness  
within 6 months of being housed







# Cares Campus - Next Steps

## Program Development

- Employment Readiness and Training
- Haircuts/Grooming
- Therapy Groups

## Construction

- November Opening: Restroom Building B and Sprung Improvements
- December Opening: Resource Center and Winter Overflow
- **November County Board Approval: Supportive Housing GMP #4**







# Nevada Cares Campus

Data for the Nevada Cares Campus located:

[https://www.washoecounty.gov/homeless/Cares-Campus/Emergency\\_Shelter/cares\\_campus\\_emergency\\_shelter\\_trends.php](https://www.washoecounty.gov/homeless/Cares-Campus/Emergency_Shelter/cares_campus_emergency_shelter_trends.php)