

HOMELESS OUTREACH PROACTIVE ENGAGEMENT

Community Homelessness Advisory Board Update
March 2022



LT. CHRIS ROWE, SPARKS POLICE DEPARTMENT
LT. ANTHONY MICELI, WASHOE COUNTY SHERIFF'S OFFICE

SPARKS POLICE DEPARTMENT H.O.P.E. PROGRAM UPDATE



- THE SPARKS HOPE TEAM WAS ESTABLISHED IN MAY OF 2020
- THE HOPE TEAM CONSISTS OF 1 SERGEANT AND 2 OFFICERS
- HOPE ORGANIZED MEETINGS BETWEEN THE SPARKS MUNICIPAL COURT AND THE RENO MUNICIPAL COURT
- THE RESULT WAS A LIMITED JURISDICTIONAL AGREEMENT BETWEEN THE TWO COURTS WHICH ALLOWED SPD HOPE TO BEGIN CITING PEOPLE INTO THE RENO MUNICIPAL COMMUNITY COURT

SPARKS POLICE DEPARTMENT H.O.P.E. 2021 DATA (FEBRUARY 2021- FEBRUARY 2022)



YEARLY STATS:

- TOTAL CONTACTS – 2,005
- PEOPLE WHO ACCEPTED RESOURCES – 208
- PEOPLE TRANSPORTED TO RESOURCES (SHELTER, HOSPITAL, SERVICE PROVIDERS) – 97
- ARRESTS – 37
- CITATIONS – 32

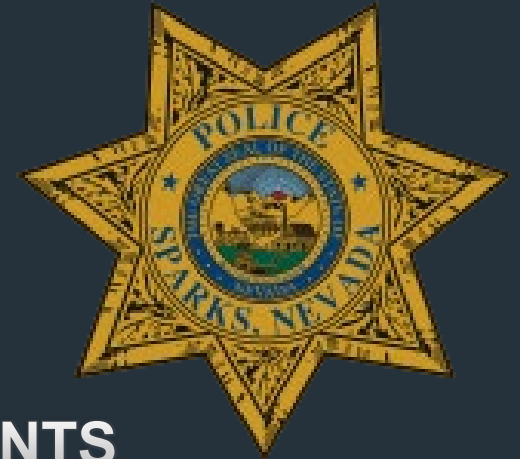
SPARKS POLICE DEPARTMENT H.O.P.E. CHALLENGES



**CURRENTLY SEEING AN INCREASE IN ABANDONED
AND/OR HAZARDOUS R.V.'s ON CITY STREETS**



SPARKS POLICE DEPARTMENT H.O.P.E. ADDITIONAL CHALLENGES



AN INCREASE OF FIRES IN HOMELESS ENCAMPMENTS



SPARKS POLICE DEPARTMENT H.O.P.E. SUCCESSES



HOPE contact AA

- Was found living with two cats underneath the McCarran bridge in below freezing temperatures.
- He was recently diagnosed with throat cancer, was unable to eat, his rent was raised on his apartment and his roommate passed away.
- Unable to pay with limited social security, AA became homeless and had to surrender his cats to the Humane Society.

HOPE efforts

- Found placement with a group home facility
- Paid the first month's rent so AA could move in immediately, while his paperwork was processed



WASHOE COUNTY SHERIFF'S OFFICE

HOMELESS OUTREACH PROACTIVE ENGAGEMENT (H.O.P.E.) TEAM



PROGRAM UPDATE

- Established on July 5, 2021
- The Team consists of 1 Sergeant and 2 Deputies
- The Team provides outreach to our homeless population by providing resources, education, life-sustaining assistance, transportation, and medical attention
- Works closely with Washoe County's Housing and Homeless Services team
- The Team works closely with all Medicaid providers, which has been instrumental in providing the resources and care needed to assist our unsheltered population
- One of our most valuable additions to the Team has been the mental health clinicians from MOST (Mobile Outreach Safety Team) who rides with our Team on a weekly basis

WASHOE COUNTY SHERIFF'S OFFICE

HOMELESS OUTREACH PROACTIVE ENGAGEMENT (H.O.P.E.) TEAM



2021 DATA

- **CONTACTS (SINCE INCEPTION OF UNIT JULY 5, 2021)**
 - 2021: 284
 - YTD: 103
- **ACCEPTED RESOURCES**
 - 2021: 66
 - YTD: 29
- **LARGE-SCALE CLEAN-UPS (DUE TO HEALTH HAZARDS AND HIGH VOLUME OF CALLS FOR SERVICE)**
 - 2021: 3 (LEON DRIVE, QUARTZ LANE, AND VETERANS PKWY TUNNELS)
 - YTD: 1 (FALCON RIDGE, NORTH OF WEEMS PARK)

WASHOE COUNTY SHERIFF'S OFFICE

HOMELESS OUTREACH PROACTIVE ENGAGEMENT (H.O.P.E.) TEAM



LARGE SCALE CLEAN-UPS

LEON DRIVE & QUARTZ LANE



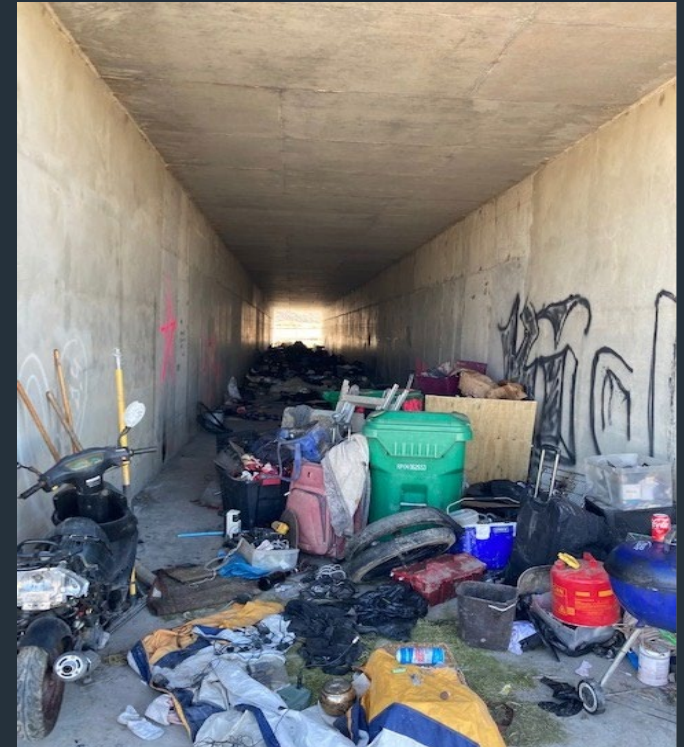
WASHOE COUNTY SHERIFF'S OFFICE

HOMELESS OUTREACH PROACTIVE ENGAGEMENT (H.O.P.E.) TEAM



LARGE SCALE CLEAN-UPS

VETERANS PKWY TUNNELS



WASHOE COUNTY SHERIFF'S OFFICE

HOMELESS OUTREACH PROACTIVE ENGAGEMENT (H.O.P.E.) TEAM



CHALLENGES

- Abandoned, unregistered and dilapidated trailers, R.V.'s and inoperable vehicles
- Limited space at the Longley yard to store trailers and R.V.'s until properly rendered safe to tow
- Individuals who will not seek shelter at the Nevada Cares Campus, Our Place or another shelter
- Open land is limited
- Due to cleanups, sweeps or other terms used for addressing our unsheltered population encampments, many of the same individuals move back and forth between jurisdictions
- A verification of bedspace in "real time"

WASHOE COUNTY SHERIFF'S OFFICE

HOMELESS OUTREACH PROACTIVE ENGAGEMENT (H.O.P.E.) TEAM



ADDITIONAL CHALLENGES

- Washoe County is currently the only law enforcement entity without an illegal camping ordinance
- Our Team takes pride in not citing or arresting, but rather providing outreach
- However, large encampments can allow for an unsafe balance in our community due to large accumulations of rubbish and debris, unsanitary conditions, drug paraphernalia, and calls for service, such as domestic violence, trouble unknown, battery, assault, and trespassing
- The need for case workers – as the Team is often acting as the case worker for the individuals they come in contact with, ensuring follow-up is conducted to provide the services and outreach that is needed

WASHOE COUNTY SHERIFF'S OFFICE

HOMELESS OUTREACH PROACTIVE ENGAGEMENT (H.O.P.E.) TEAM



SUCCESSSES

- Our Team has worked diligently to break the barriers between law enforcement and our unsheltered population. These types of interactions have made our Team successful in building trustful and lasting relationships with the homeless individuals we encounter
- After the completion of all four clean-ups, not a single citation or arrest was made
- We have provided 1 bus pass to Wisconsin (reuniting the individual with his family)
- Housed 2 separate individuals, each having a dog
- Built invaluable partnerships with Medicaid providers, local shelters, local entities who provide a continuum of care, sister agencies, County Roads, and Sheriff's Office work crews to name just a few
- We now have MOST workers who ride with the Team on a weekly basis

WASHOE COUNTY SHERIFF'S OFFICE

HOMELESS OUTREACH PROACTIVE ENGAGEMENT (H.O.P.E.) TEAM



FUTURE

- A Consolidated data base for jurisdictional continuity
- Continued collaboration with our local shelters, the community, Washoe County entities, sister agencies, and service providers
- Training and education for our Team on how to recognize the relationships between mental health, substance abuse, and homelessness – this will ensure the proper utilization of resources and referrals needed to help the individual
- Case workers who are crucial in completing follow-up and much needed continued care for our clients
- A County Ordinance for “Illegal Camping”
- A streamlined process for the towing of abandoned vehicles, trailers, and R.V.’s

QUESTIONS



Thank you