



## NEVADA CARES CAMPUS WASHOE COUNTY

Hello from the staff at Washoe County Housing and Homeless Services and Nevada Cares Campus!

We would like to welcome you and express our commitment to service all participants and staff at the Nevada Cares Campus. It is important for us to remain committed to being a housing-focused Campus by providing services and supporting your pursuit toward housing goals. Through these monthly newsletters we will provide updates of the current state and future changes that will be taking place at the Campus. These updates will include services, scheduled activities for all to participate in, construction, and more. If there are changes taking place in the interim, these changes will be communicated through campus staff and case managers.

We look forward to staying connected.

### We will meet you where you are at

A participant arrived at the shelter, who like many, had lost their housing due to rent increases in the area. Even though the participant was on Social Security Disability Insurance (SSDI), the participant could no longer afford their housing. During their time at the shelter, the participant was having additional health concerns but overall was willing to work with case management. The case manager and the participant began working together to get the participant's identification and proof of income. As the participant was eager to leave the shelter, the participant kept meeting and working with their case manager and on June 17th the participant moved into the Village at Sage, a low-income housing program! As the participant continues to establish themselves, the participant's health has gotten better and the participant now feels safe.

*This story was one of many shared by case managers. To read additional success stories please visit our website at [www.washoecounty.gov/homeless](http://www.washoecounty.gov/homeless)*

### Campus Partners

- Anthem Outreach
- Bristlecone Recovery Center
- Division of Welfare and Supportive Services (DWSS)
- Eddy House Outreach
- Food Bank of Northern Nevada (FBNN)
- Health Plan of Nevada
- Mill Street Care
- Mobile One Docs
- Molina Healthcare
- Silver Summit Health Plan

Our partners are bringing services directly to the Campus including Medicaid assistance, Food Stamp signups, community resources, and so much more!

Have questions regarding our partners or don't see a service you need on Campus? Talk to your case manager about learning more and how you can access the services you need!

### Schedule of Partners on Campus

Partner Organization	Monday	Tuesday	Wednesday	Thursday	Friday
Anthem Outreach		9am-12pm			
Bristlecone Recovery		3pm-4:30pm			
Division of Welfare and Supportive Services	8am-5pm	8am-5pm	1pm-5pm	8am-5pm	8am-5pm
Eddy House Outreach					11am-1pm
Food Bank of Northern Nevada	8am-3pm			8am-3pm	
Health Plan of Nevada			1pm-3pm		
Mill Street Care	11am-1pm	11am-1pm	11am-1pm	11am-1pm	11am-1pm
Mobile One Docs	9am-4pm	9am-4pm	9am-4pm	9am-4pm	9am-4pm
Molina Healthcare	11am-1pm				
Silver Summit Health Plan			12:30-2:30pm		
WellCare		9am-11pm			9am-pm

## Clean out days and what to expect

A regular cleaning routine is vital for the cleanliness and well being of participants. Cares Campus cleaning days are every Tuesday and Friday from **9:00 am-11:00 am**.

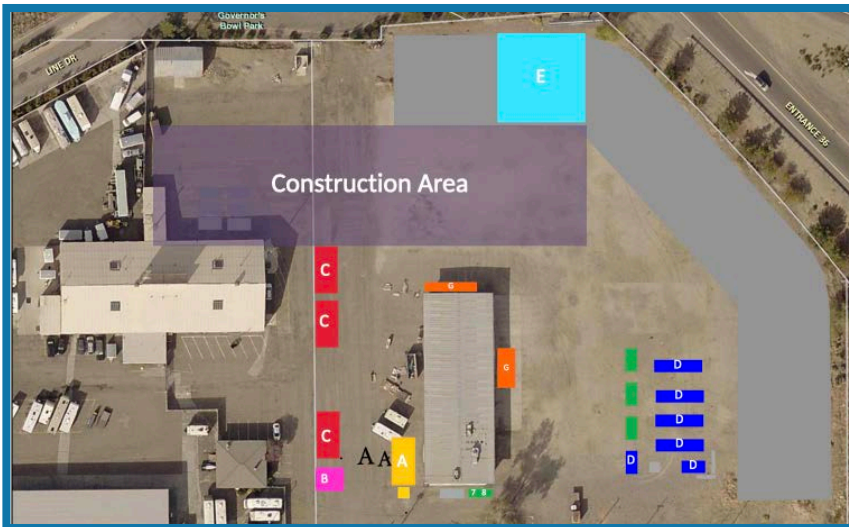
There are endless cleaning tasks to tackle when it comes to keeping the Cares Campus clean and free of germs and viruses. The best way to stay on top of cleaning is to keep a regular cleaning routine.

During cleaning days, participants are encouraged to take all personal belongings or utilize the property storage room or individual lockers.

Cleaning days are an opportunity for participants to lend a hand in the cleaning process, if you would like to learn more, connect with VOA staff.

## Current ongoing construction map

During construction sections of the Campus will continue to be closed or relocated to new temporary buildings that will assist in continuing to provide services. Map of the current new temporary buildings include:



**A** The Welcome Center, Security and Intake, located at the entrance of Campus

**B** Mail located across the Welcome Center

**C** Case Management

**D** Bathrooms, showers and laundry

**E** Meals, day use area and cooling area

**F** Behavioral Health and partner services

**G** Property Storage

We appreciate your patience as we work to improve the Campus!

## Have you heard about the RTC van?

We now have an RTC van to help participants access community resources throughout Washoe County!

Ask a VOA staff member or speak with your case manager to review the schedule and find out what day and time we are headed to each location.

## Did you know?

### The Welcome Center is now open!

We are happy to announce the new Welcome Center at the entrance of Campus is now open. Participants, staff, and visitors will now enter through this building, check in with VOA staff, and walk through a new metal detector. For those seeking a shelter bed, intakes are now being completed in this building.

### Meet VOA's New Team

Scott Benton, Shelter Director  
Penny Adams, Assistant Shelter Director.

The team is excited to continue partnering with Washoe County to transition participants into their next step of housing with love and dignity.

### Birthday Celebrations!

Please join us Wednesday July 20th at 1:00pm for birthday cake to celebrate!