



## NEVADA CARES CAMPUS WASHOE COUNTY

Hello, from the staff at Washoe County Housing and Homeless Services and Nevada Cares Campus! We would like to welcome you and express our commitment to service all participants and staff at the Nevada Cares Campus. We are a housing-focused Campus, and it is important that the services we provide support your pursuit of housing goals. Through these monthly newsletters, updates will be provided about the current state and future changes at the Campus. These updates will include services, scheduled activities, construction and more. If there are changes taking place, these changes will be communicated through Campus staff and case managers. We look forward to staying connected.

### Current Campus Partners

- Anthem
- Bristlecone
- Catholic Charites
- City of Reno - Clean & Safe Team
- DETR – Department of Employment, Training, and Rehabilitation
- Dispatch Health
- Downtown Reno Partnership
- Eddy House
- Food Bank of Northern Nevada
- Health Plan of Nevada/United Healthcare
- JC Lighthouse
- Karma Box Project – Street Outreach
- Liberty Dental
- Mill Street Care Center
- Mobile One Docs
- Molina Healthcare
- My Journey Home
- Northern Nevada Adult Mental Health Services (NNAMHS)
- Northern Nevada Behavioral Health
- Northern Nevada HOPES
- Reno Behavioral Health
- Reno Gospel Mission
- Reno MOST
- Silver Summit Healthplan
- Veterans Administration
- Vitality Unlimited
- Washoe County Health District
- Washoe County MOST
- WellCare

Our partners are bringing services directly to the Campus and we look forward to so much more soon! Have questions regarding our partners or don't see a service you need on Campus? Talk to your case manager about learning more and how you can access the services you need!

### We will meet you where you are at

While many individuals arrive at the Campus from different areas in the community, we had a couple arrive at the Campus after their family housing arrangements did not work out following their relocation from the Marshall Islands to the US Mainland.

Although the couple had social security cards, they faced documentation barriers, such as the lack of ID's and birth certificates – creating a delay in their employment and housing applications. However, with the help of case managers, the couple worked hard to address this. After 6 months of hard work, they had great results. They were each able to get their birth certificates from the Marshall Islands and IDs from the state of Nevada. In regard to employment, one of the partners found employment, while unfortunately the other could not, due to medical issues requiring in home healthcare. In addition to this, the couple was able to find an apartment. This created relief, as the partner with medical issues would start receiving in home medical assistance.

The couple has now exited the Campus to the first place they called home since they arrived in the U.S. Mainland. The Case Management team wishes this couple the very best.

*This story was one of many shared by case managers. To read additional success stories please visit our website at [www.washoecounty.gov/homeless](http://www.washoecounty.gov/homeless)*

### Updated Partner Schedule

Monday	Tuesday	Wednesday	Thursday	Friday
8am – 3pm Food Bank of Northern Nevada	8am – 3pm Food Bank of Northern Nevada	8am – 4:30pm MedTrust	8am – 3pm Food Bank of Northern Nevada	8am – 4:30pm MedTrust
8am – 4:30pm MedTrust	8am – 4:30pm MedTrust	9am – 12pm Mobile One Docs	8am – 4:30pm MedTrust	9am – 11am WellCare
9am – 12pm Mobile One Docs	9am – 12pm Mobile One Docs	10am – 11am Vitality	9am – 11:30am Reno Housing Authority	
10am – 12pm Mill Street Care Center	9am – 12pm Anthem Outreach	10am – 2pm JC Lighthouse "The Crew"	9am – 12pm Mobile One Docs	
11a – 1pm Molina Healthcare	9am – 11am WellCare	12:30pm – 3pm Silver Summit Outreach	9am – 12pm Anthem Outreach	
	10 am – 2pm JC Lighthouse "The Crew"	1pm – 3pm HPN Outreach	10am – 12pm Mill Street Care Center	
	10am – 12pm Mill Street Care Center	1pm – 2pm Donation van Catholic Charities of Northern Nevada	10am – 2pm JC Lighthouse "The Crew"	
	1pm – 3pm VA Outreach			
	3pm – 4:30pm Bristlecone Recovery Center			

## The opening of new buildings!

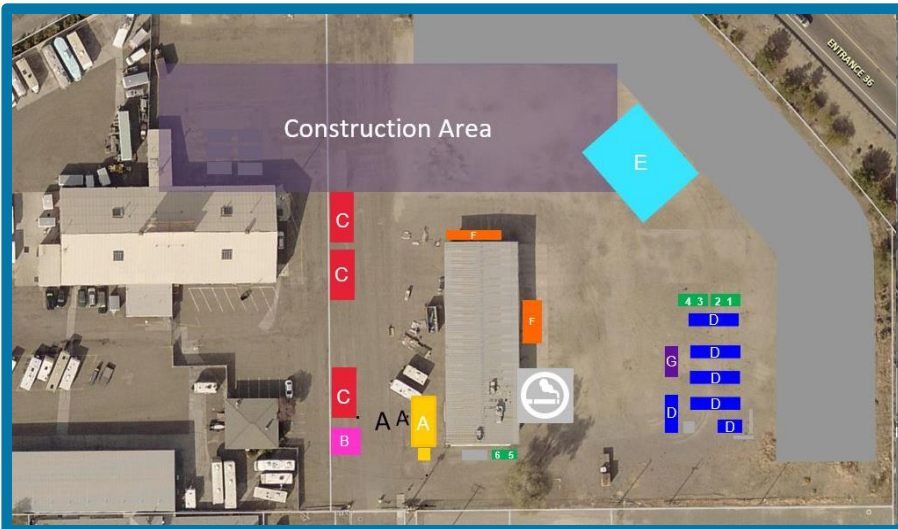
We would like to thank everyone for bearing with us through all the construction changes. We are excited to share the following buildings will be opening in the near future:


- Women's dorm
- Property room
- Bathroom and laundry room

If you have any questions, please connect with a Campus staff member or your case manager.

## Current ongoing construction map

Sections of the Campus will continue to be closed or relocated to new temporary buildings during construction. The current temporary buildings include:



- A** The Welcome Center, Security, and Intake, located at the entrance of Campus
- B** Mail located across the Welcome Center
- C** Case Management
- D** Bathrooms, showers, and laundry
- 1-6** Behavioral Health and Partner Services Offices
- E** Meals, day use area and cooling area
- F** Property Storage
- G** Medical
-  Smoking Area

We appreciate your patience as we work to improve the Campus!

## Catholic Charities donation van on Campus

Do you need hygiene items, feminine hygiene products, socks, or clothing items?

Come check out the Catholic Charities donation on Campus every Wednesday with these items and more!

- Time: 1 pm
- Location: Food Tent

## Did you know?

### What if you can't make it to the donation van on Wednesdays?

If you can't make it to the Catholic Charities donation van on Wednesdays, please connect with your case manager or mental health counselor to learn about the Catholic Charities donation voucher program.

We are grateful for Catholic Charities and their generous donations to all participants.