

# Connect with Cares

FALL EDITION | 2023



HOUSING & HOMELESS SERVICES

## NEVADA CARES CAMPUS WASHOE COUNTY

Hello, from the staff at Washoe County Housing and Homeless Services and Nevada Cares Campus!

We would like to welcome you and express our commitment to service all participants and staff. We are a housing-focused Campus, and it is important the services we provide support your pursuit of housing goals. Through these monthly newsletters, updates will be provided about the current state and future changes at the Campus, as well as scheduled activities, construction and more! If additional changes take place, these will be communicated through Campus staff and case managers. We will stay connected!

### New partner on Campus:

#### The Chamber of Commerce and Northern Nevada Literacy Council (NNLC)

Have you ever considered what your dream job may be? Have you ever investigated what your natural talents and skills are? Maybe you have an eye for floral arranging, maybe you have excellent customer service and would like to be an administrative assistant. Are you interested in welding or landscaping?

We are partnering with the NNLC to help connect people staying on Campus with vocational opportunities that are best suited to their skills and desires. The jobs listed above are just a short list of what is available in our community.

Through the course of four sessions, you will be assessed and learn about the best opportunities among local employers to find a job that you enjoy and that can help you move into your own stable housing.

If you would like to participate – please talk to your Case Manager and let them know you are interested in the program.

### We will meet you where you are at

An 83-year-old participant, who entered the shelter two years ago, found it difficult to engage with staff due to being irritable and guarded. He had become comfortable with staying at the shelter and did not want to leave. He tended to sleep most of the day and often voiced hopelessness about the quality of his life. However, after months of engagement efforts by a behavioral health counselor and case manager, he agreed to step foot outside the shelter. He had not left the shelter in sixteen months when he finally agreed to go to his bank and shopping at Walmart. Once off campus, he opened up and began telling stories about his life. He seemed to really enjoy sharing these stories. He became ecstatic about trips off campus and kept asking staff when he could have another outing. After a few additional outings with staff, he was finally open to exiting the shelter to permanent housing. He agreed to accompany staff on a tour of a group home, and after living at the Nevada Cares Campus for two years, he agreed to move into the group home. Many staff members at the Campus shared warm goodbyes with this participant as he was leaving and stated that he would be missed. During a follow-up visit a couple days later, this participant appeared to be enjoying the new environment in which he now resides.

To read additional success stories please visit: [www.washoecounty.gov/homeless](http://www.washoecounty.gov/homeless)

### Schedule of Partners on Campus

Monday	Tuesday	Wednesday	Thursday	Friday
8am – 4:30pm MedTrust	8am – 3pm Food Bank of Northern Nevada	8am – 4:30pm MedTrust	8am – 3pm Food Bank of Northern Nevada	8am – 4:30pm MedTrust
9am – 11am WellCare Health	8am – 4:30pm MedTrust	9am – 12pm Mobile One Docs	8am – 4:30pm MedTrust	9am-11am WellCare Health
9am – 12pm Mobile One Docs	9am – 11am WellCare Health	10am – 11am Vitality	9am – 11am WellCare Health	
10am – 12pm Mill Street Care Center	9am – 12pm Anthem Outreach	12:30pm – 3pm Silver Summit Outreach	9am – 11:30am Reno Housing Authority	
11am – 1pm Molina Healthcare	9am – 12pm Mobile One Docs	1pm – 3pm HPN Outreach	9am – 12pm Mobile One Docs	
1pm – 3pm VA Outreach	10am – 12pm Mill Street Care Center	1pm – 2pm Donation van Catholic Charities of Northern Nevada	9am – 12pm Anthem Outreach	
6pm – 7pm Alcoholics Anonymous Group	3pm – 4:30pm Bristlecone Recovery Center	1pm – 3pm DETR		

# Connect with Cares

FALL EDITION | 2023



HOUSING & HOMELESS SERVICES

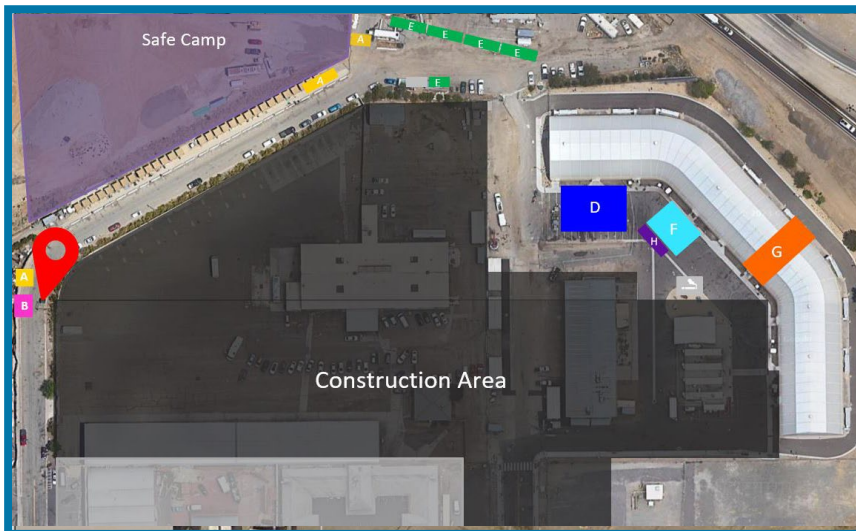
## The Resource Center will open December 1












We are very excited to open and utilize the space!  
Thank you for your patience and understanding during construction.

## Temporary Construction Map

Sections of the Campus will continue to be closed or relocated to new temporary buildings during construction. The current temporary buildings include:



-  Entrance of Campus
-  The Welcome Center, Security, and Intake
-  Mail located at the Entrance of Campus
-  Bathrooms, showers, and laundry
-  Case Management, Behavioral Health, and Partner Services
-  Meals, day use area and cooling area
-  Property Storage
-  Medical
-  Smoking Area

We appreciate your patience as we work to improve the Campus!

## Are you interested in a cubby?

If you are engaged in case management and attending your regularly scheduled meetings and appointments, you may be eligible for a cubby.

Connect with your case manager to see if you meet all the criteria for a cubby.

## Did you know?

## Happy Thanksgiving!



We look forward to sharing holiday comfort and joy with all this holiday, join us for the following:

- **Desserts and Warm Drinks**  
Wednesday, November 22  
6:00pm-7:30pm
- **Thanksgiving Lunch**  
Thursday, November 23  
11:00am-11:30am Delivery

We are thankful for our community partners and their donations to the campus.

Stay connected at [www.washoecounty.gov/homeless](http://www.washoecounty.gov/homeless)

In partnership with Volunteers of America, Allied Universal, and Karma Box