

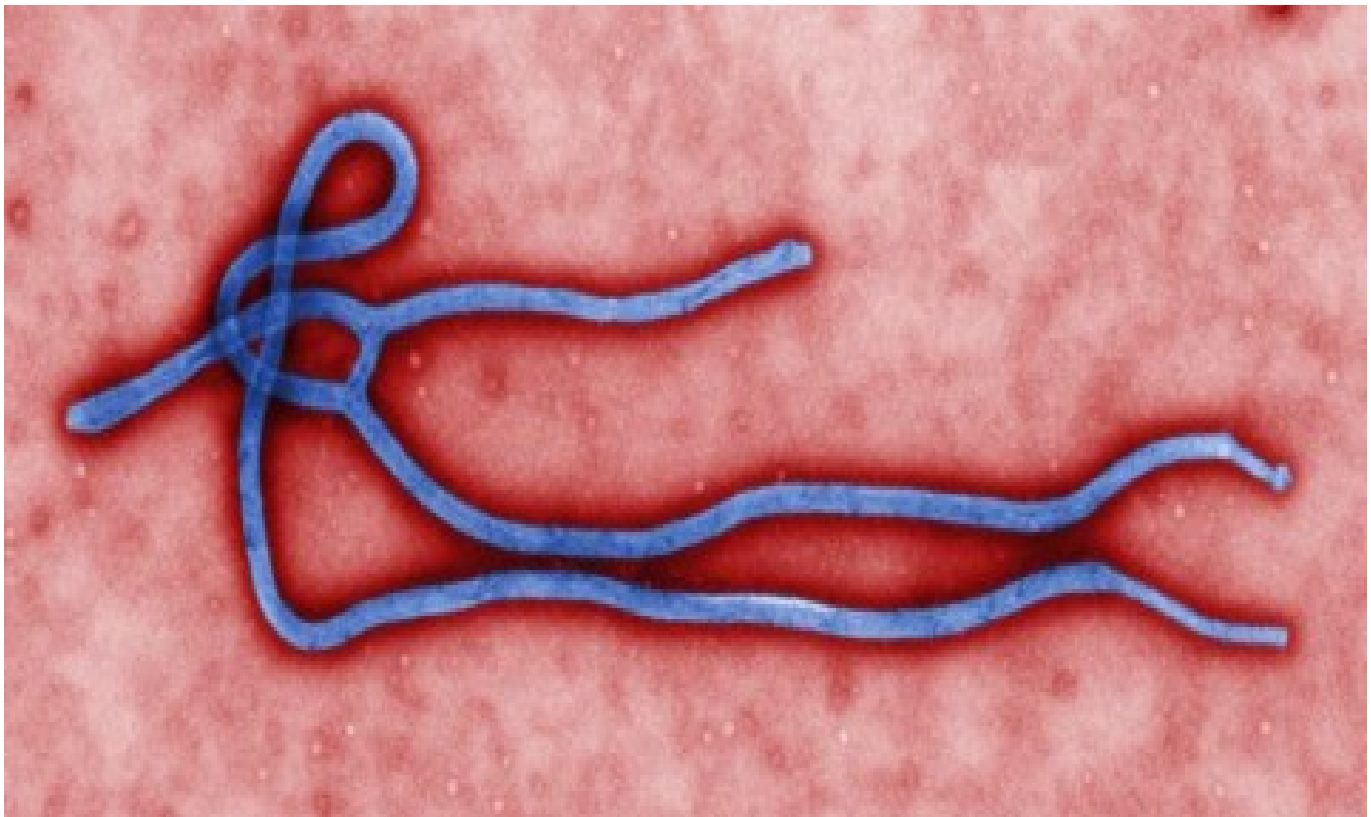


- ◆ Identify, Isolate, Inform: Emergency Department Evaluation and Management of Patients with Possible Ebola Virus Disease

This alert contains information on investigations in progress and/or diagnoses that may not yet be confirmed.

The Physician Alert is intended primarily for the use of local health care providers, should be considered privileged, and should NOT be distributed further.

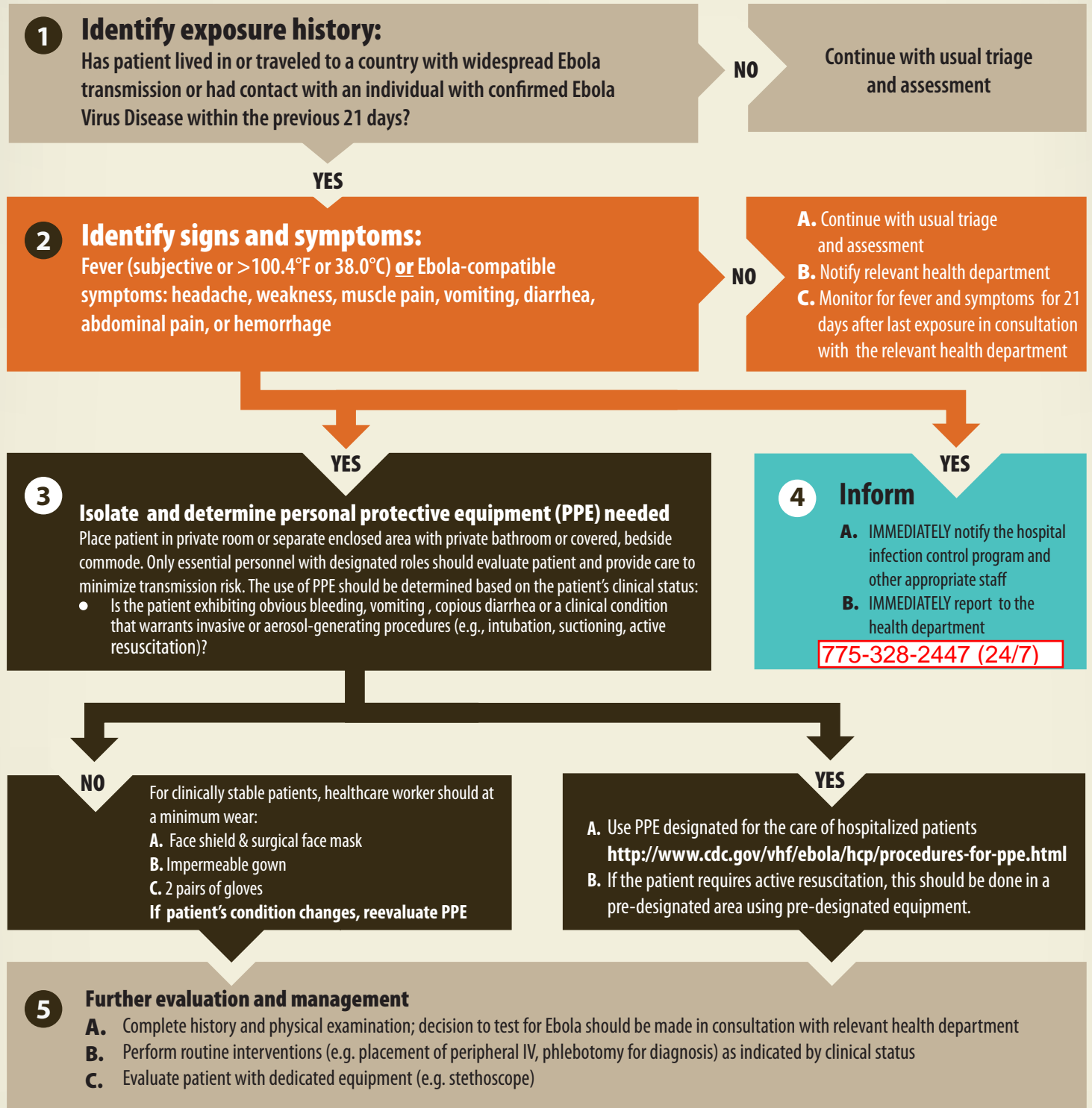
## **IDENTIFY, ISOLATE, INFORM: EMERGENCY DEPARTMENT EVALUATION AND MANAGEMENT FOR PATIENTS WHO PRESENT WITH POSSIBLE EBOLA VIRUS DISEASE**



On October 25, 2014, CDC issued a new algorithm entitled “Identify, Isolate, Inform: Emergency Department Evaluation and Management of Patients with Possible Ebola Virus Disease” (see following page). Although this new algorithm specifically targets Emergency Departments, this algorithm also applies to the majority of outpatient settings. Washoe County Health District (WCHD) highly recommends healthcare providers follow this algorithm. Again, travel history to West African countries with widespread Ebola transmission (Guinea, Liberia, and Sierra Leone as of October 27, 2014) or an exposure history to suspect cases are critical components in the evaluation process. Should you have any questions regarding this evaluation algorithm, please call WCHD at 775-328-2447.

Please share this document with all physicians/staff in your office/facility.

# Identify, Isolate, Inform: Emergency Department Evaluation and Management of Patients with Possible Ebola Virus Disease



**U.S. Department of Health and Human Services**  
Centers for Disease Control and Prevention