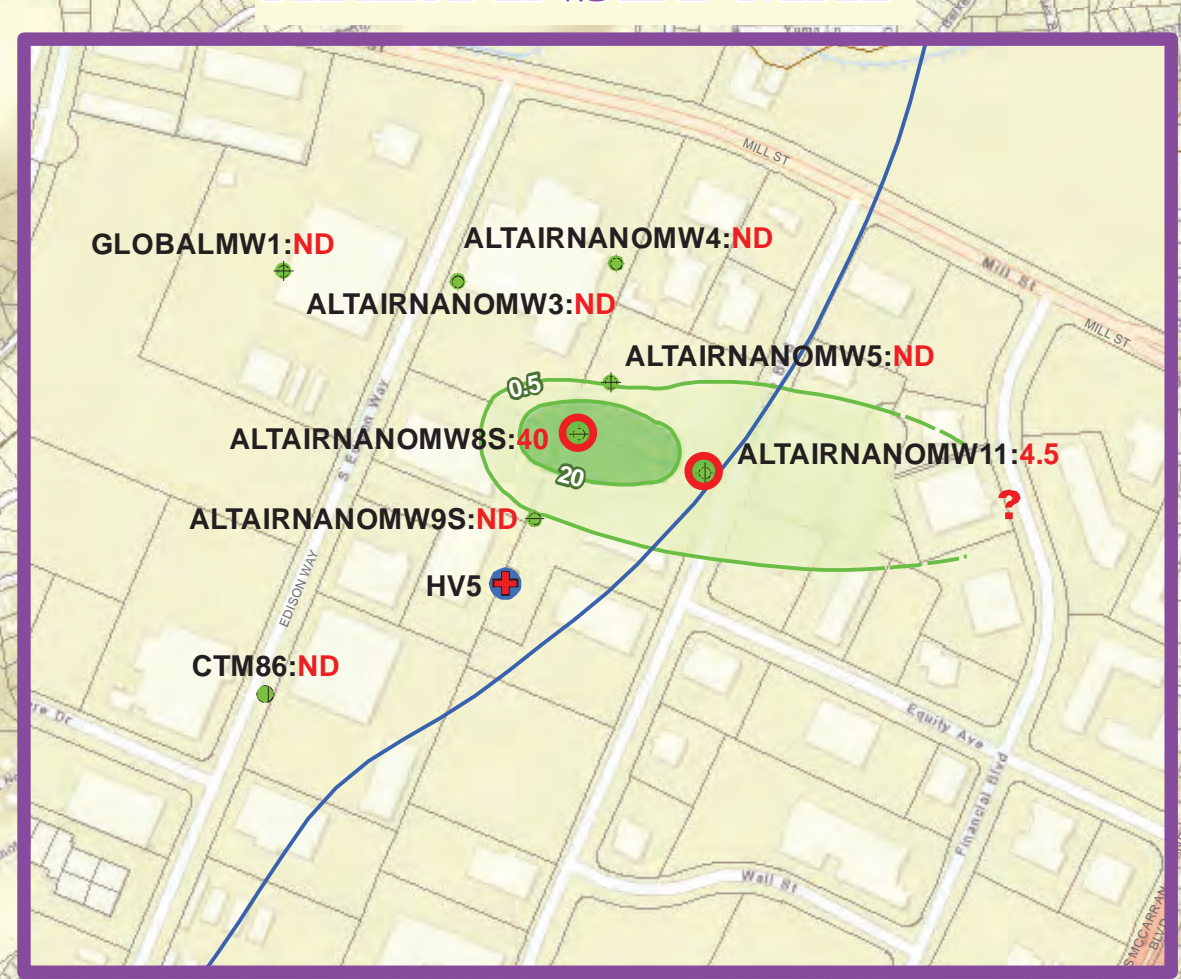
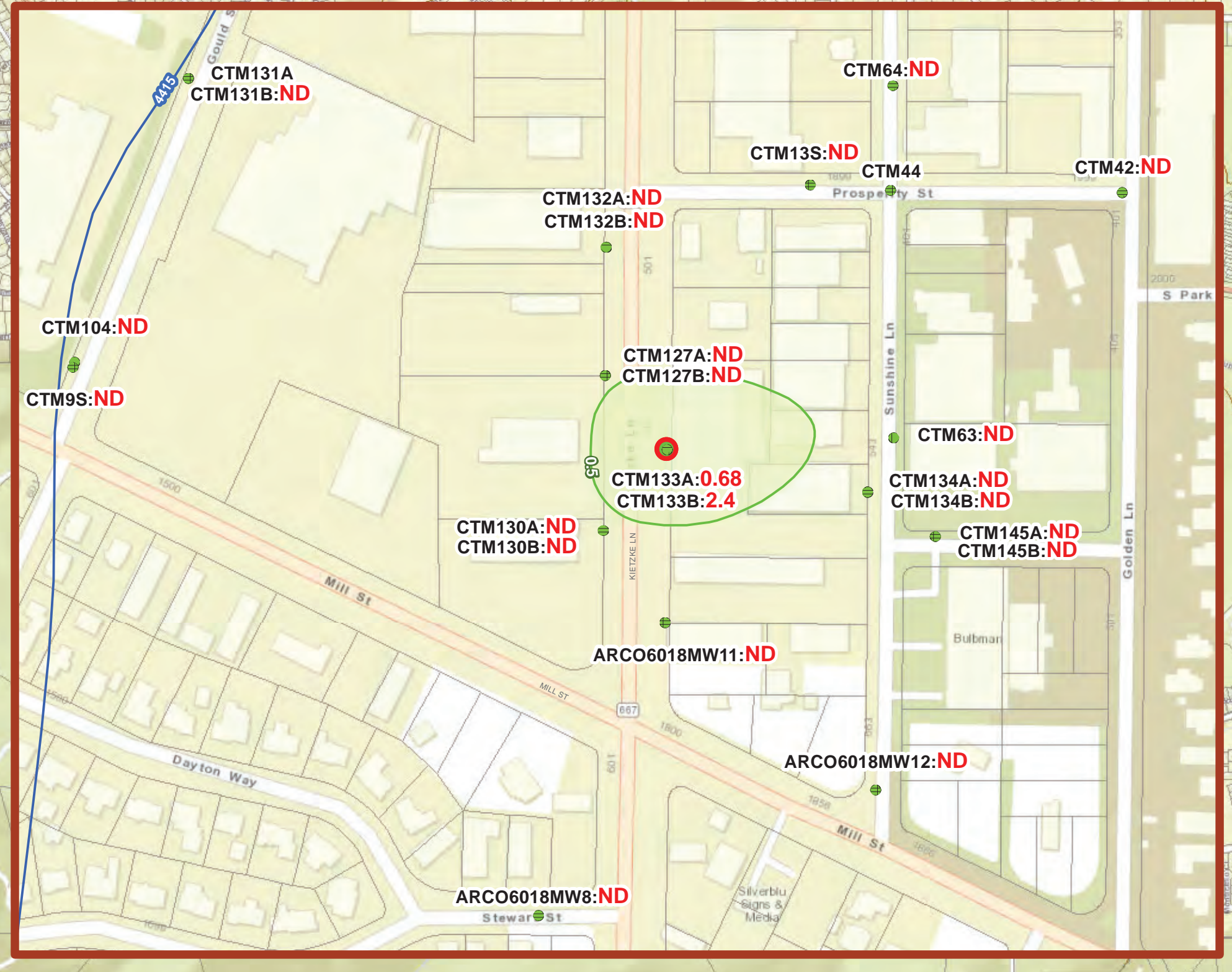


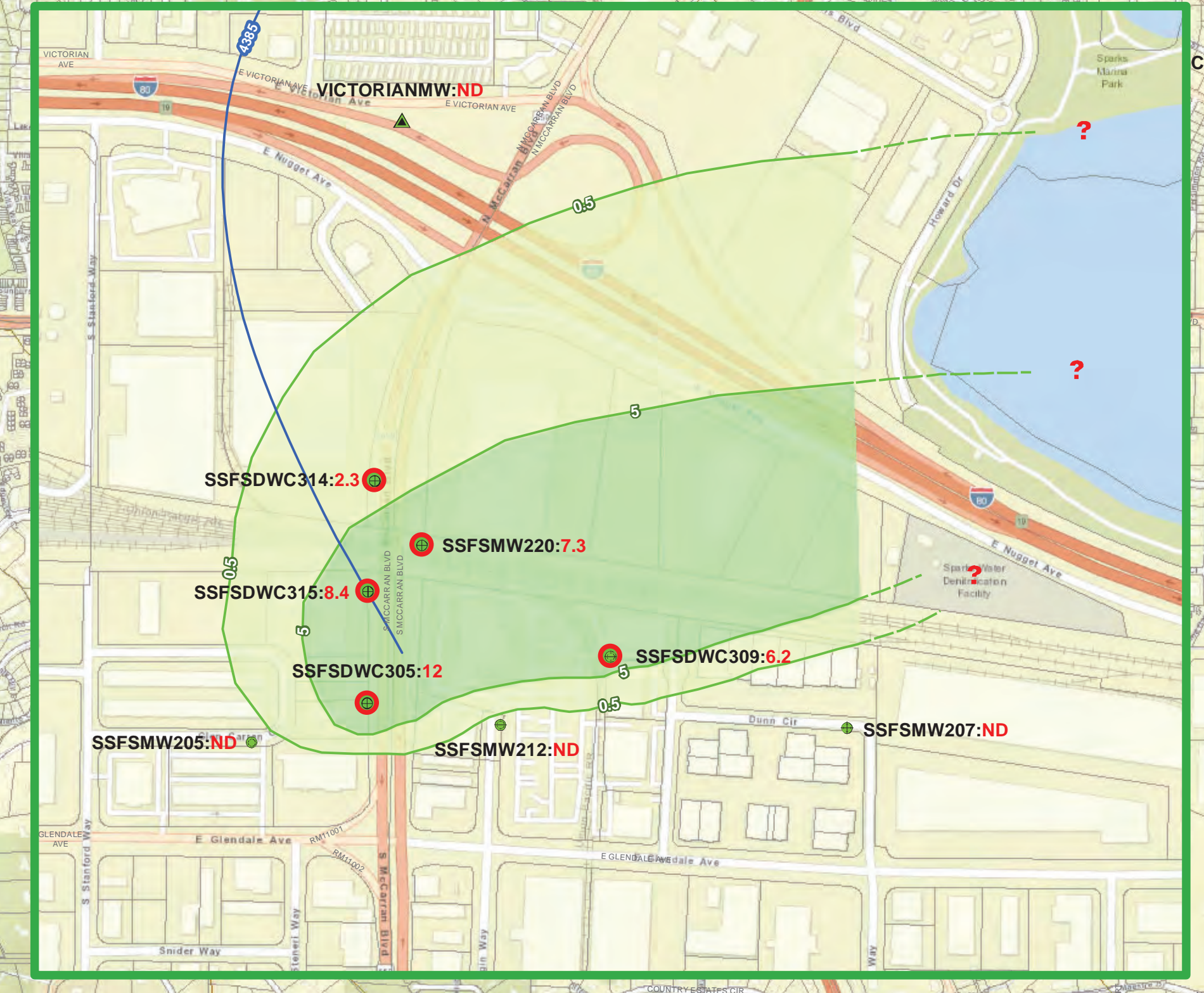
MILL / EDISON WAY AREA INSET MAP



MILL / KIETZKE AREA INSET MAP



EAST SPARKS AREA INSET MAP



VASSAR / E PLUMB AREA INSET MAP

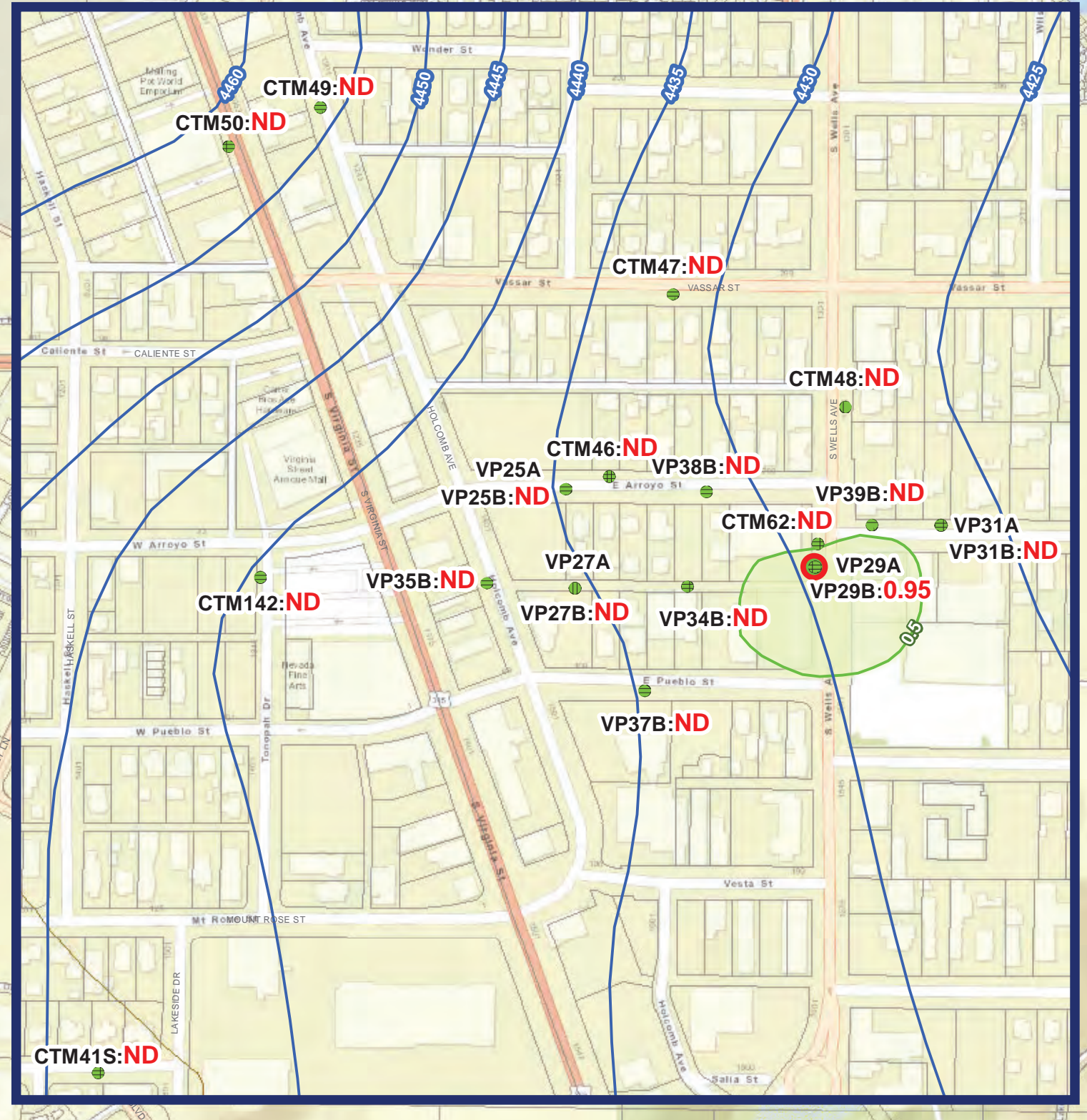


FIGURE 4.4

Water Level and TCE Concentration in Shallow Zone Wells July-September 2020

Well Type	Sample Results
● PRODUCTION WELL (PCE TREATED) - TMVA, D	● Detected at greater than the 0.50 µg/L TCE reporting limit
● PRODUCTION WELL - (PCE IMPACTED), D	○ Values plotted only for wells that were sampled. Data from production wells are from samples collected under pumping conditions unless otherwise stated. Values plotted that are less than 0.50 µg/L are either noted as non-detect (ND) or indicate a value provided by the lab.
● DOMESTIC WELL, S	○ Below Analytical Reporting Limit
● MONITORING WELL - OTHER, S	○ Insufficient data for estimating lateral extent of contamination
● MONITORING WELL - TMVA, S	○ TCE Concentration Areas
● MONITORING WELL - WCCSD, S	○ TCE Concentration Contours
● PRODUCTION WELL - OTHER, D	○ TCE Concentration Contours - Inferred
● PRODUCTION WELL - TMVA, D	○ Actual lateral extent of contamination uncertain
● PRODUCTION WELL - WCCSD, D	
● PRODUCTION WELL - WCCSD, INDUCTION	
— Water Level Elevation Contours	
— Feet Above Mean Sea Level - Dashed Where Approximate or Estimated	
→ Groundwater Flow Direction	
— Creek	
— Ditch	

NOTES:
The scale and configuration of all information shown herein are approximate only and are not intended as a guide for design or survey work. Responsibility for the proper interpretation and use of this information lies with the user.
PCE/TCE contour reflect data from the time range noted. Where such data were not collected, the most recent data for those locations were used. Contours may not represent the exact extent of contamination in groundwater. Water elevation contours associated with pumping or recharge wells are shown and may not reflect actual elevations outside over the entire time range noted.

SCALE:
1,000 Feet

Central Truckee Meadows Remediation District Program