

DRAFT

Sage Grouse Habitats and Leks

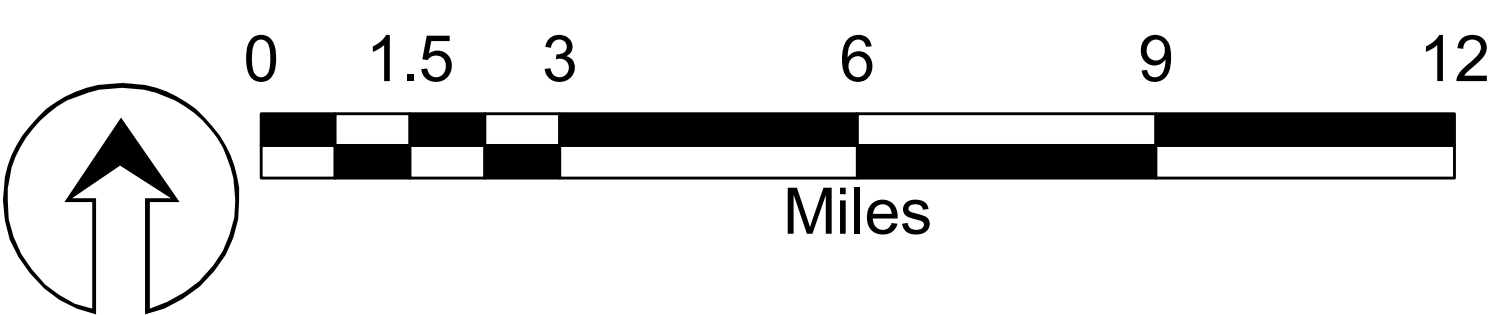
Legend

- Sage Grouse Leks
- Nesting
- Summer
- Winter
- Tribal Lands
- City of Reno
- City of Sparks
- TMSA Boundaries
- Playas

SOURCE: Open Space and Natural Resource Planning

DATE: MAY 29, 2007

NOTE: THE SCALE AND CONFIGURATION OF ALL INFORMATION SHOWN HEREON ARE APPROXIMATE ONLY AND ARE NOT INTENDED AS A GUIDE FOR DESIGN OR SURVEY WORK. REPRODUCTION IS NOT PERMITTED WITHOUT PRIOR WRITTEN PERMISSION FROM THE WASHOE COUNTY COMMUNITY DEVELOPMENT DEPARTMENT.



**Department of
Regional Parks and Open Space**



**Department of
Community Development**



**WASHOE COUNTY
NEVADA**

Post Office Box 11130
Reno, Nevada 89520

(775) 328-3600

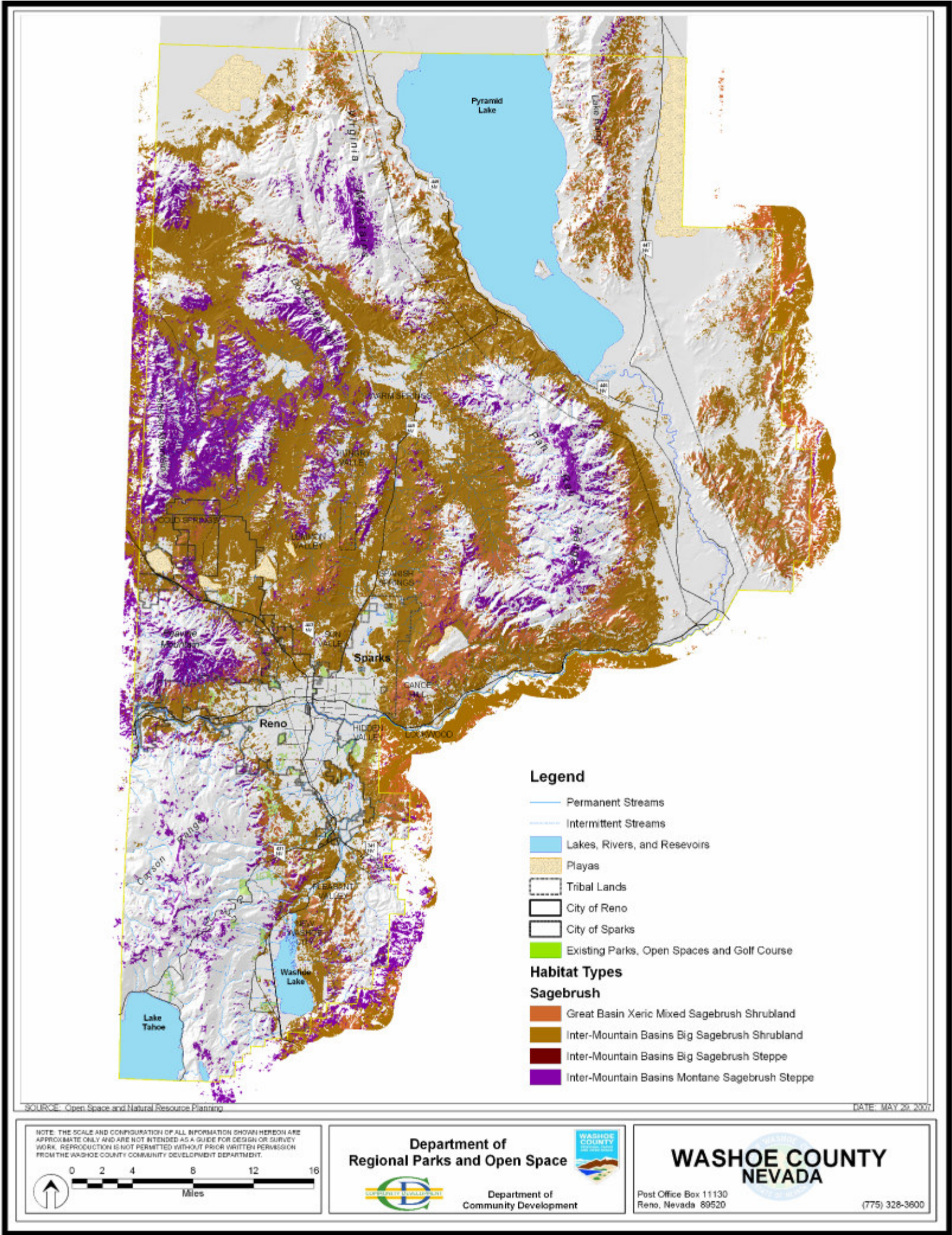


Figure 17: Sagebrush Habitat

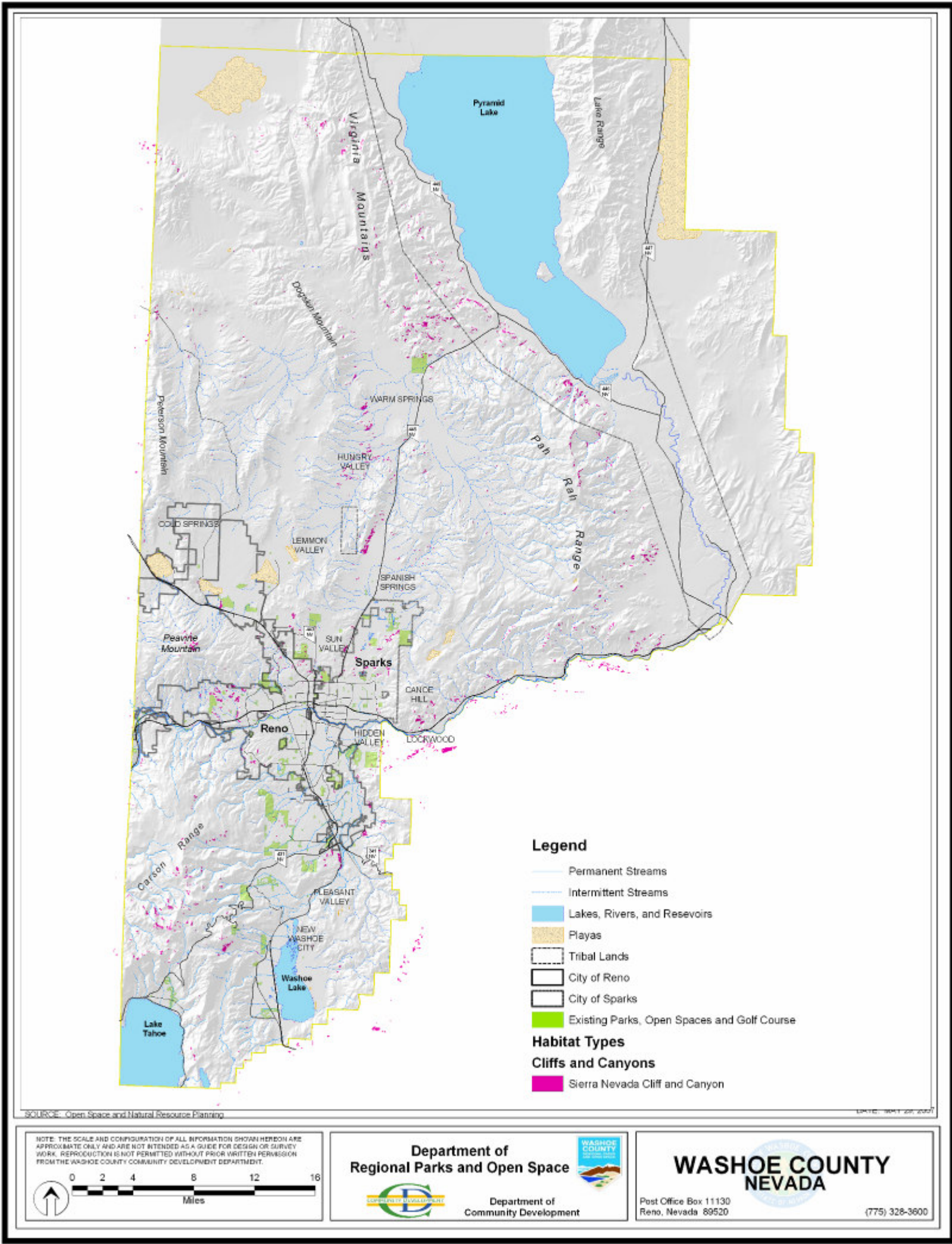


Figure 18: Cliffs and Canyons

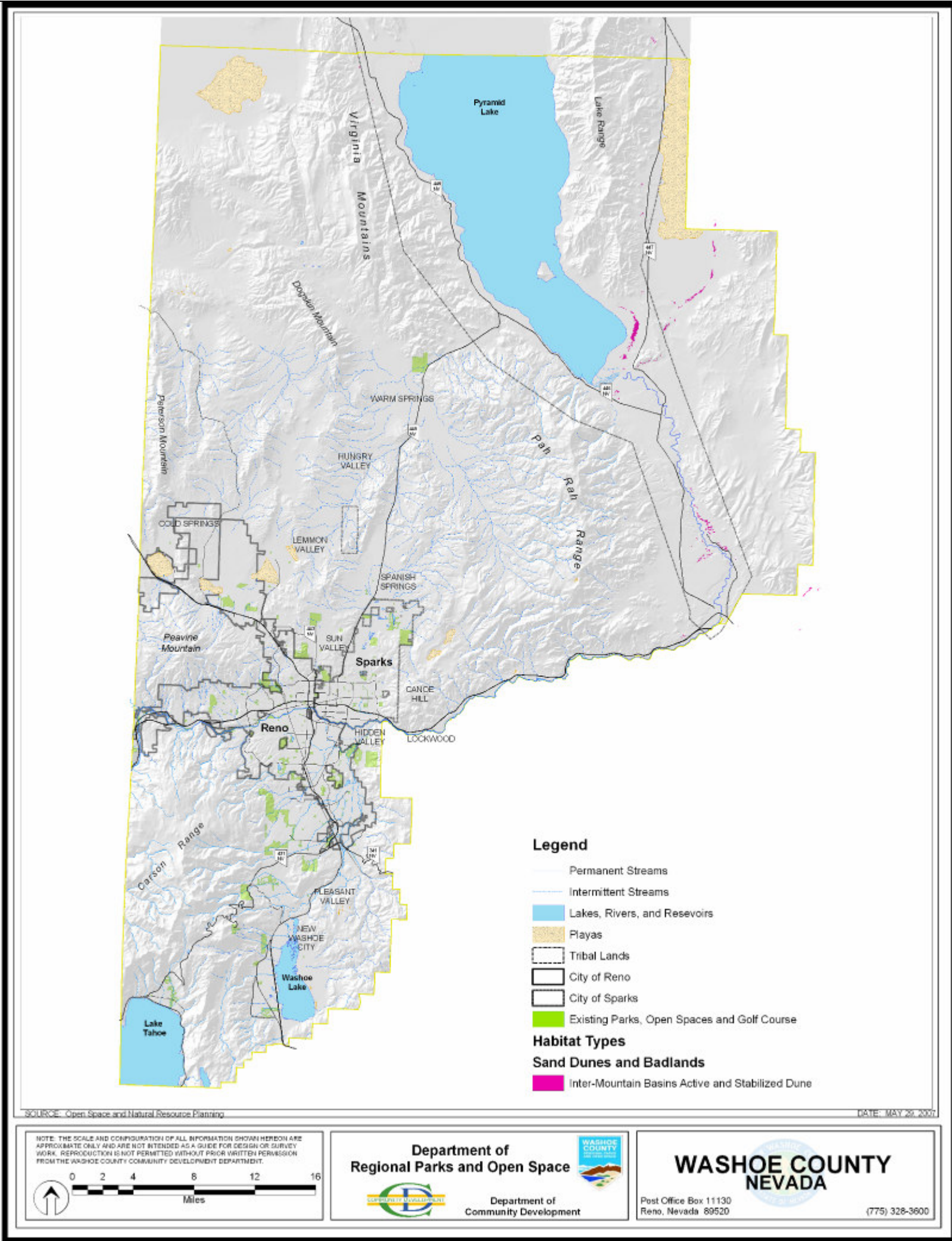


Figure 19: Sand Dunes and Badlands

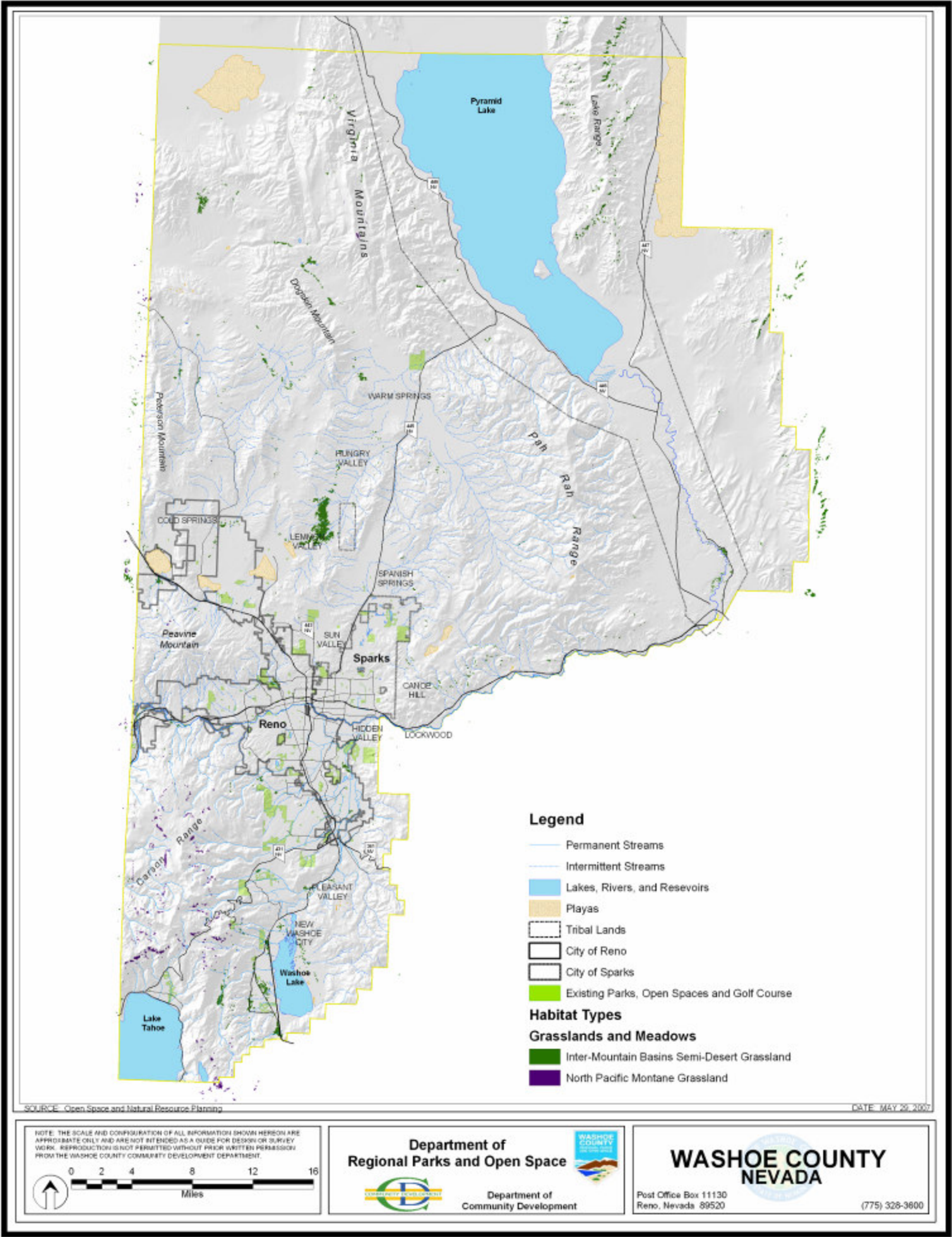


Figure 20: Grasslands and Meadows

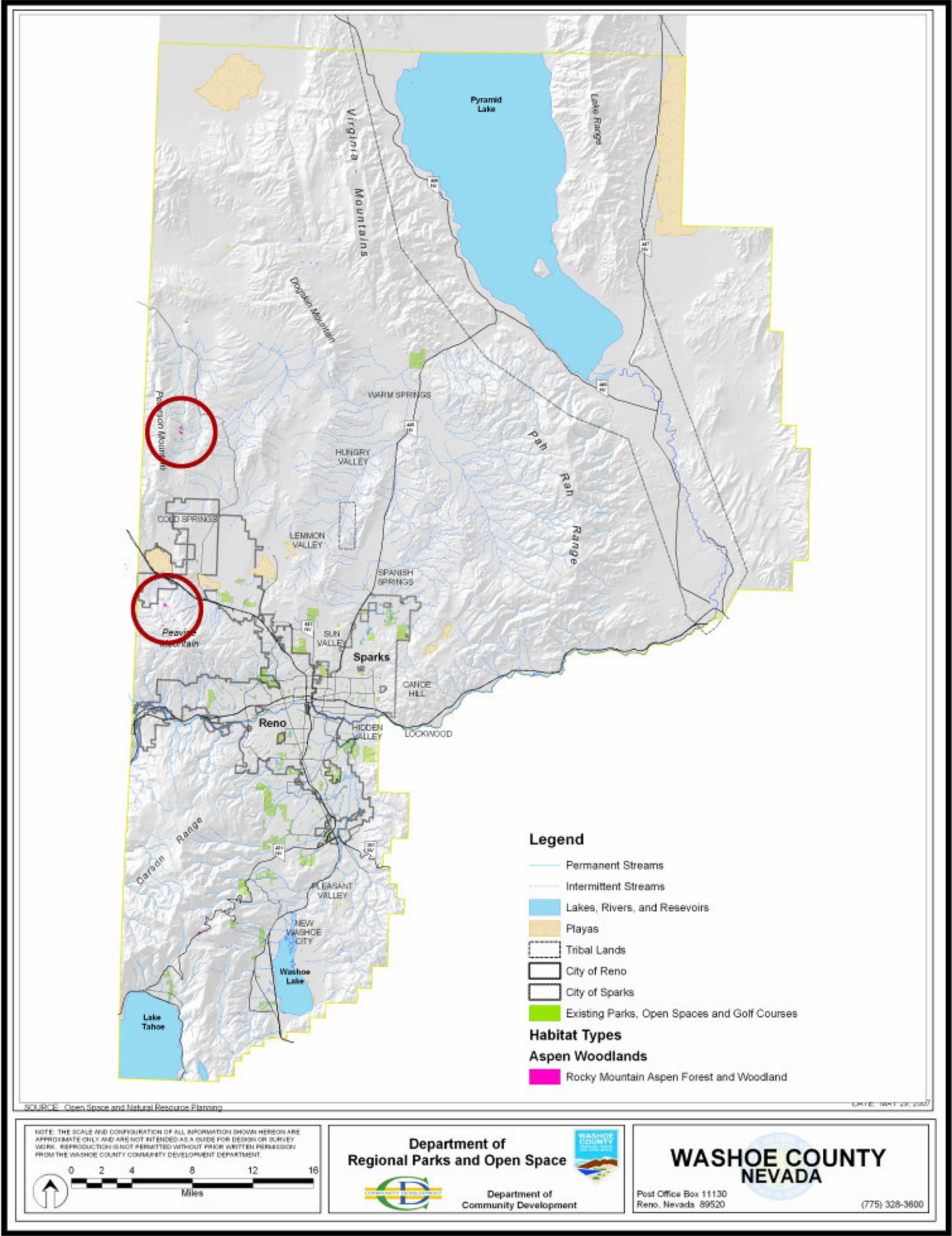


Figure 21: Aspen Woodlands

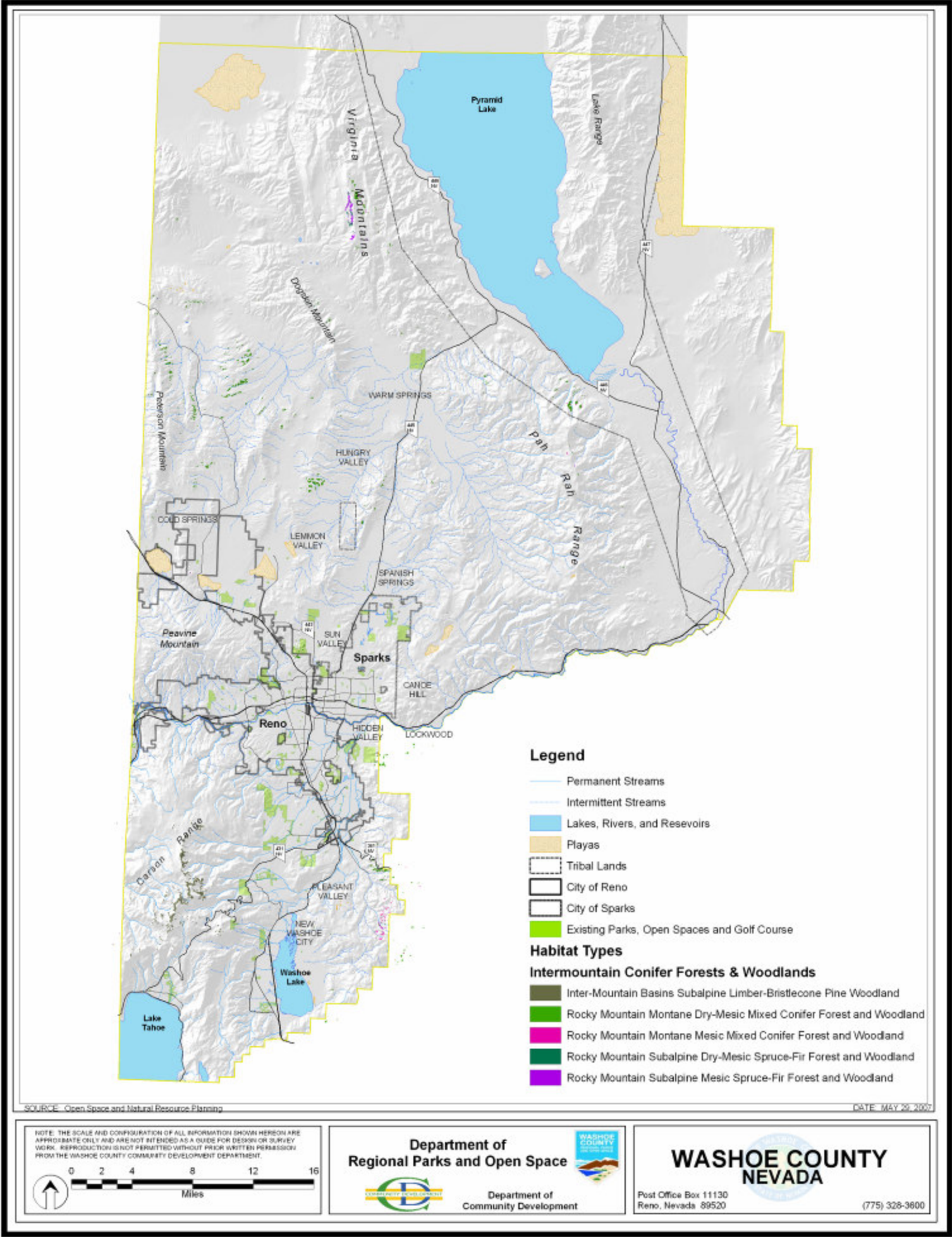


Figure 22: Intermountain Conifer Forests and Woodlands

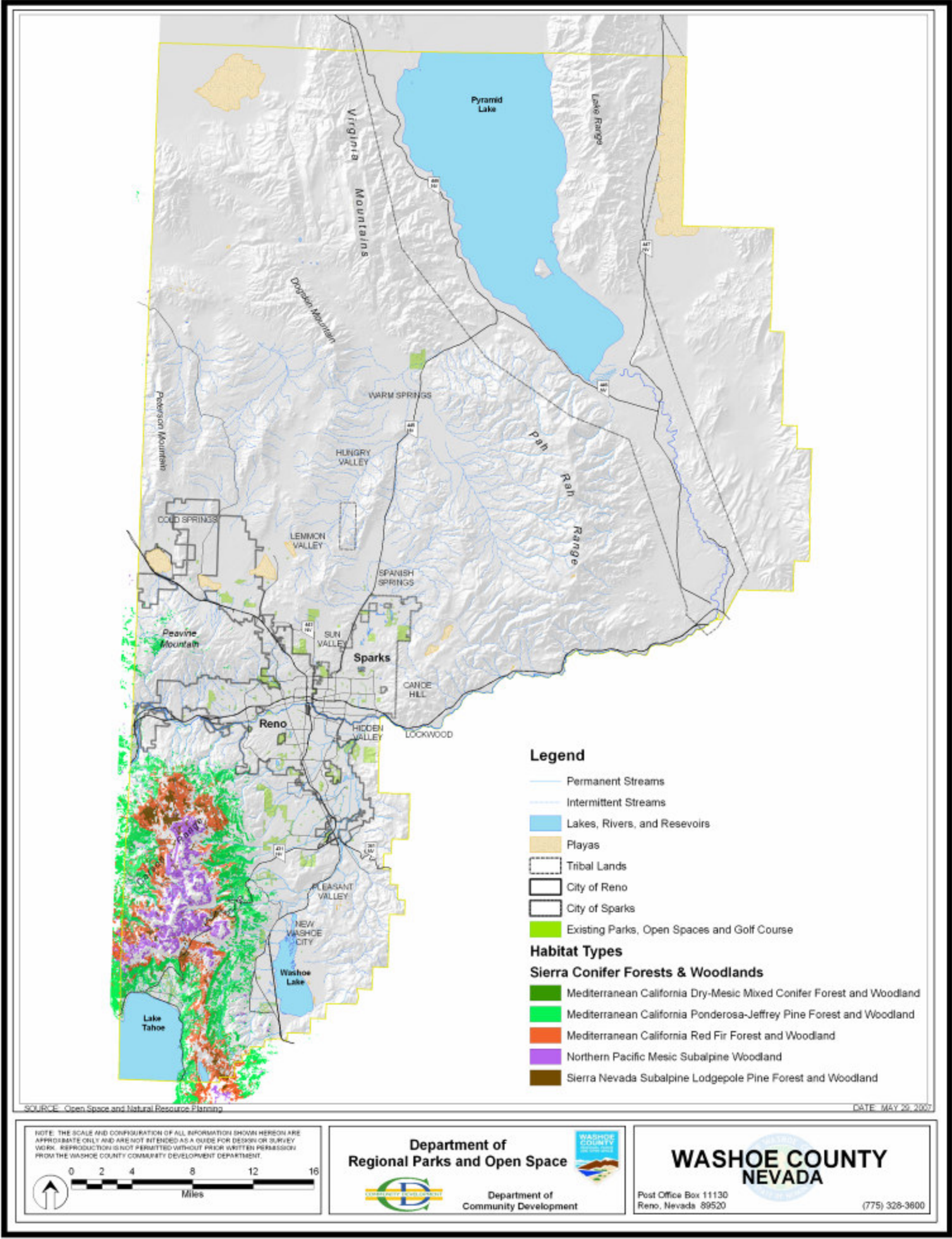


Figure 23: Sierra Conifer Forests and Woodlands

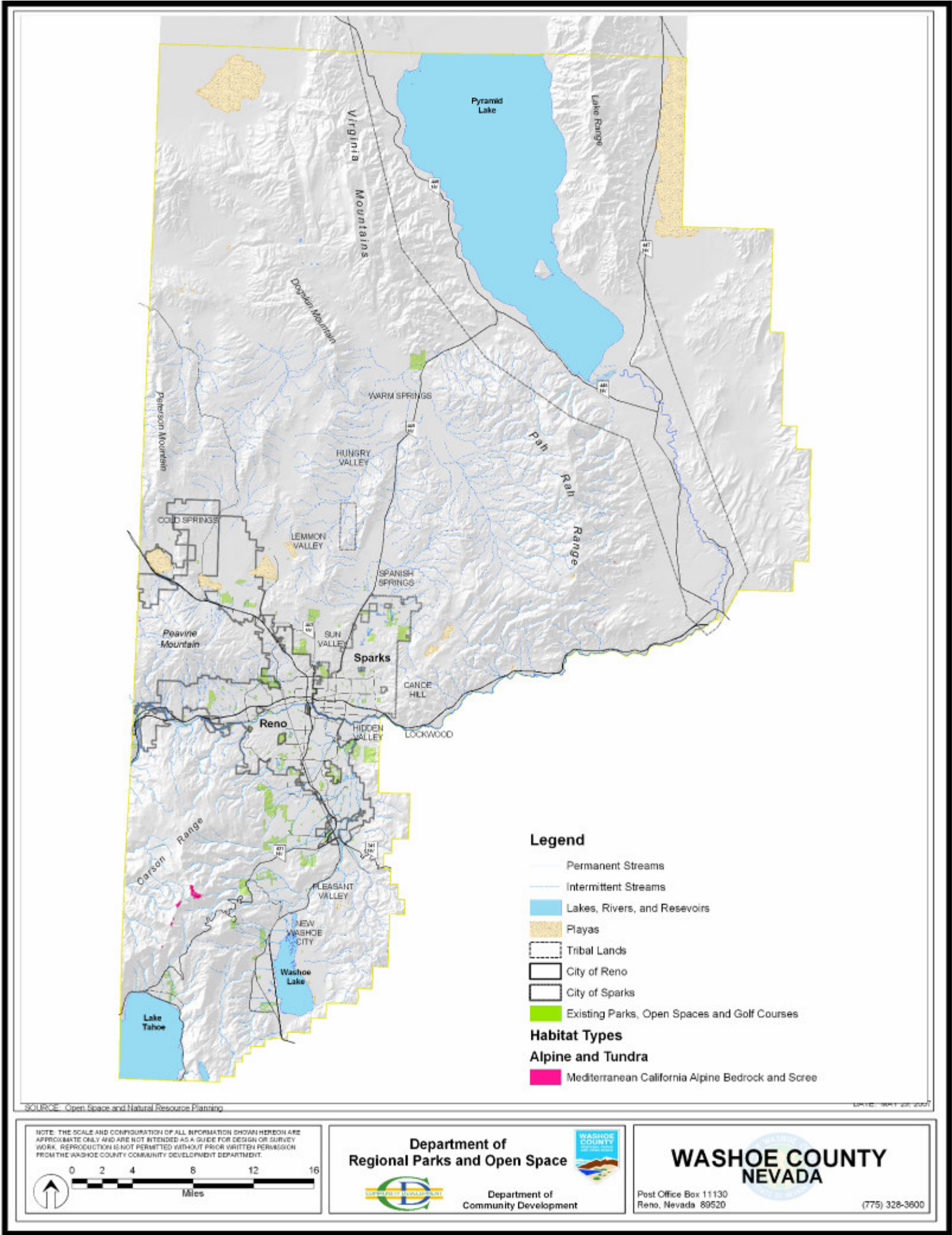


Figure 24: Alpine and Tundra Habitats

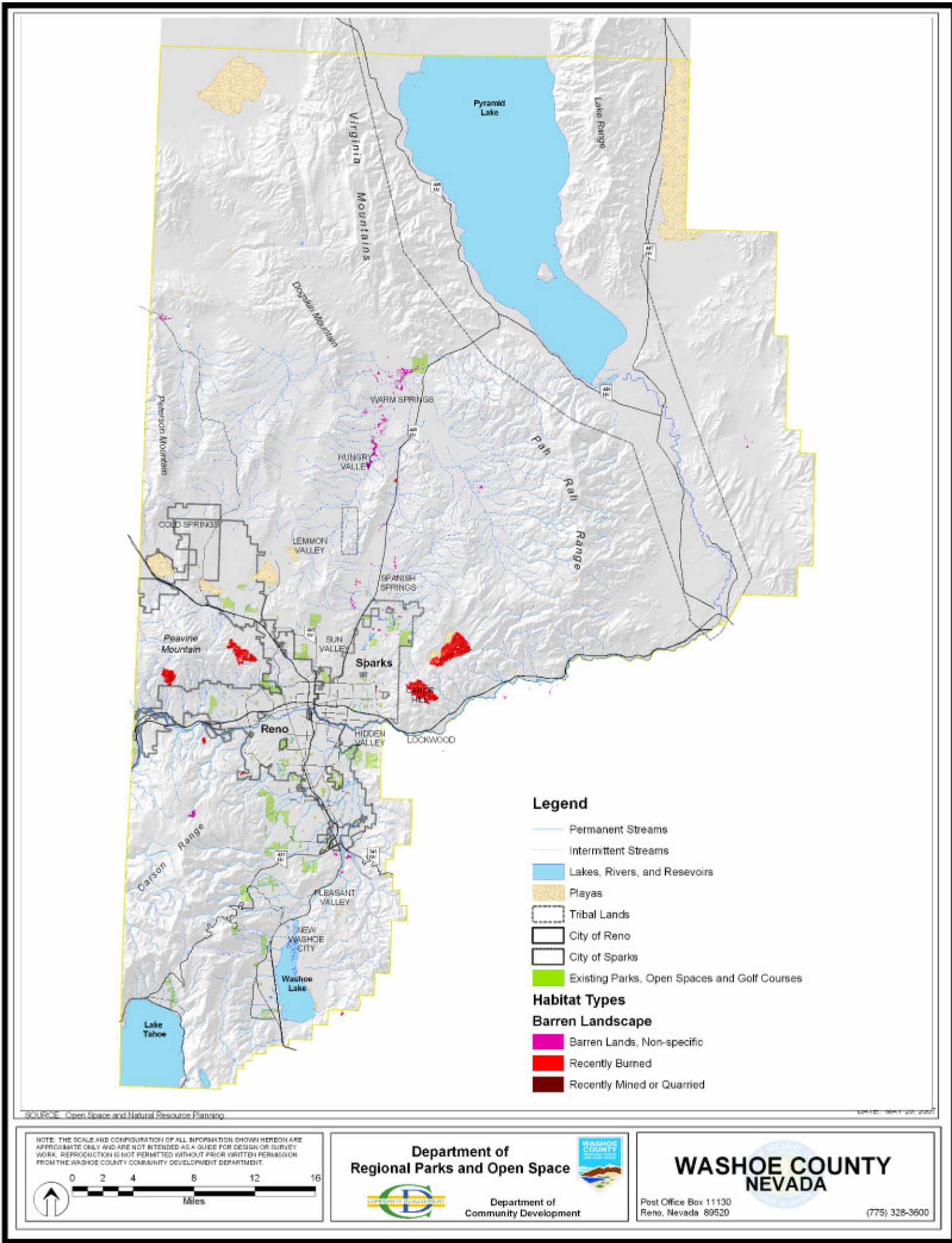


Figure 25: Barren Landscape

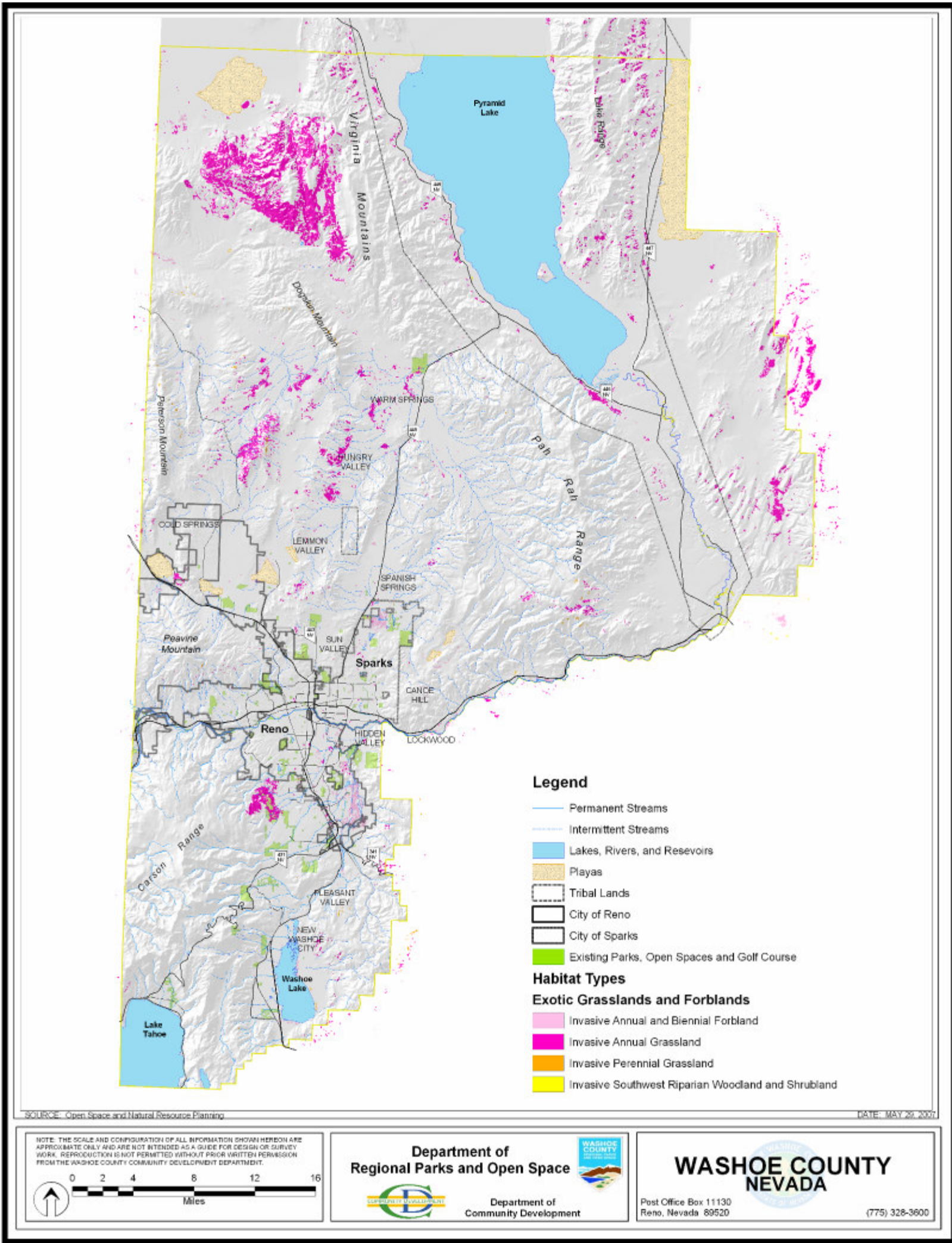


Figure 26: Exotic Grasslands and Forblands

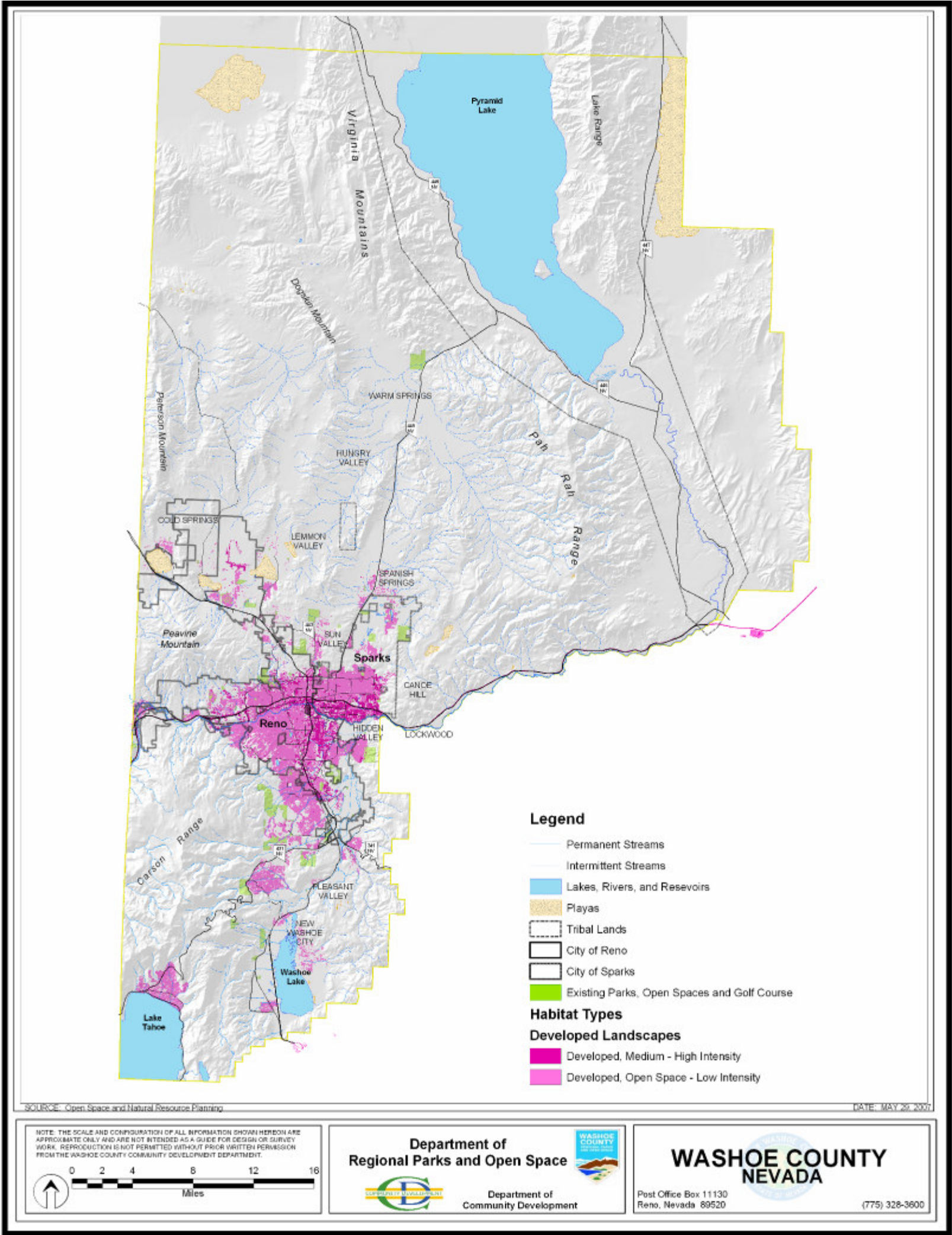


Figure 27: Developed Lanscapes

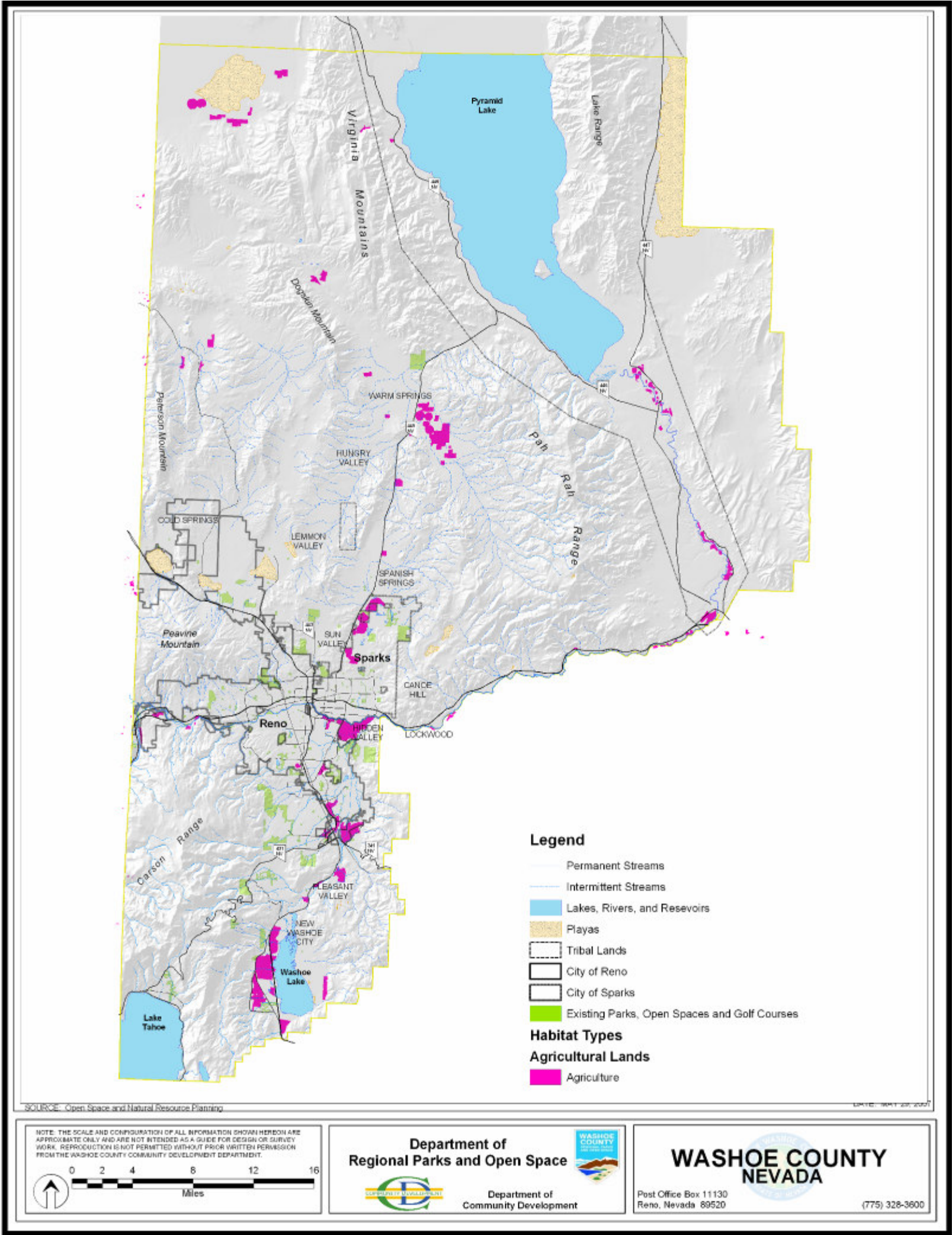


Figure 28: Agricultural Lands

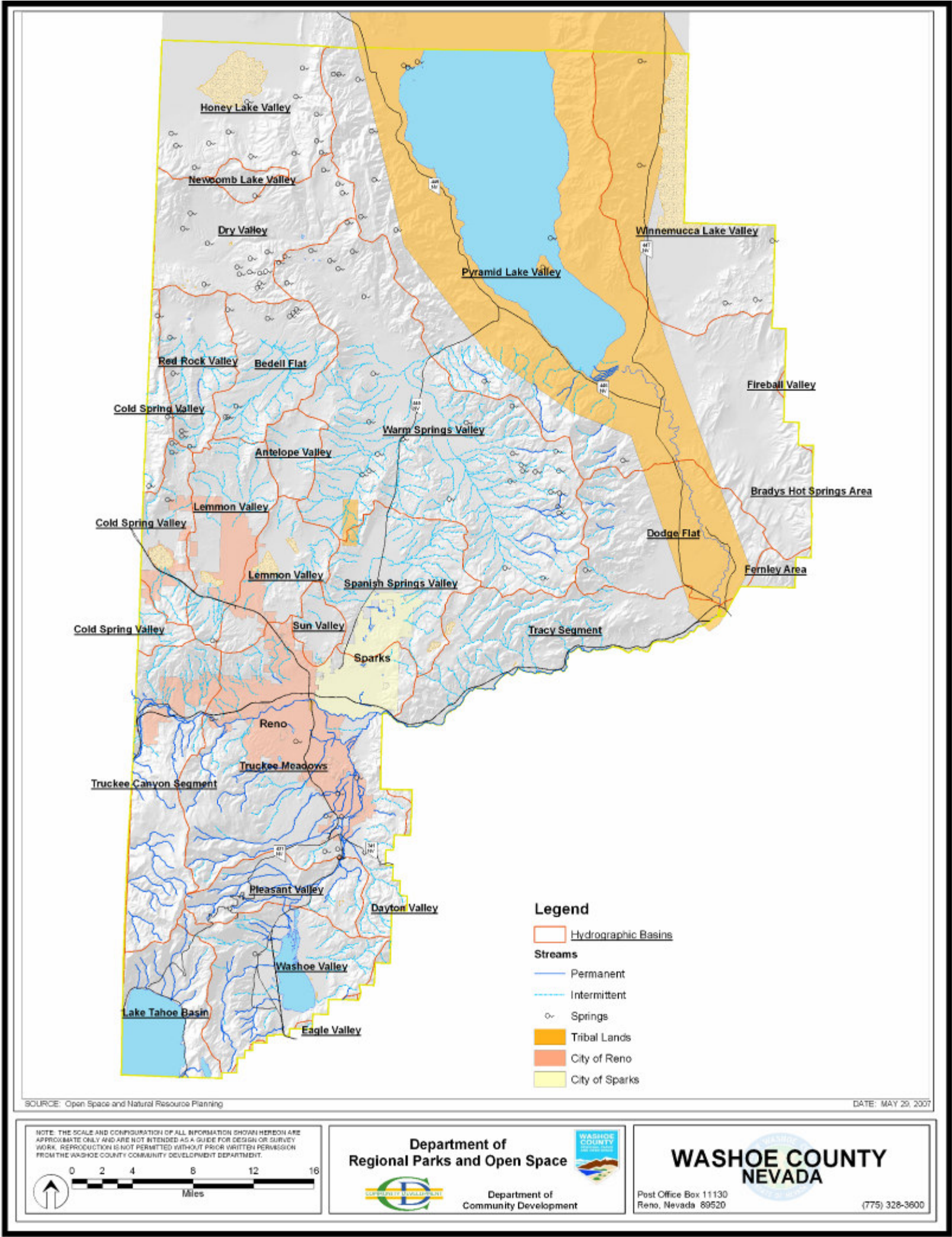


Figure 29: Hydrographic Basins

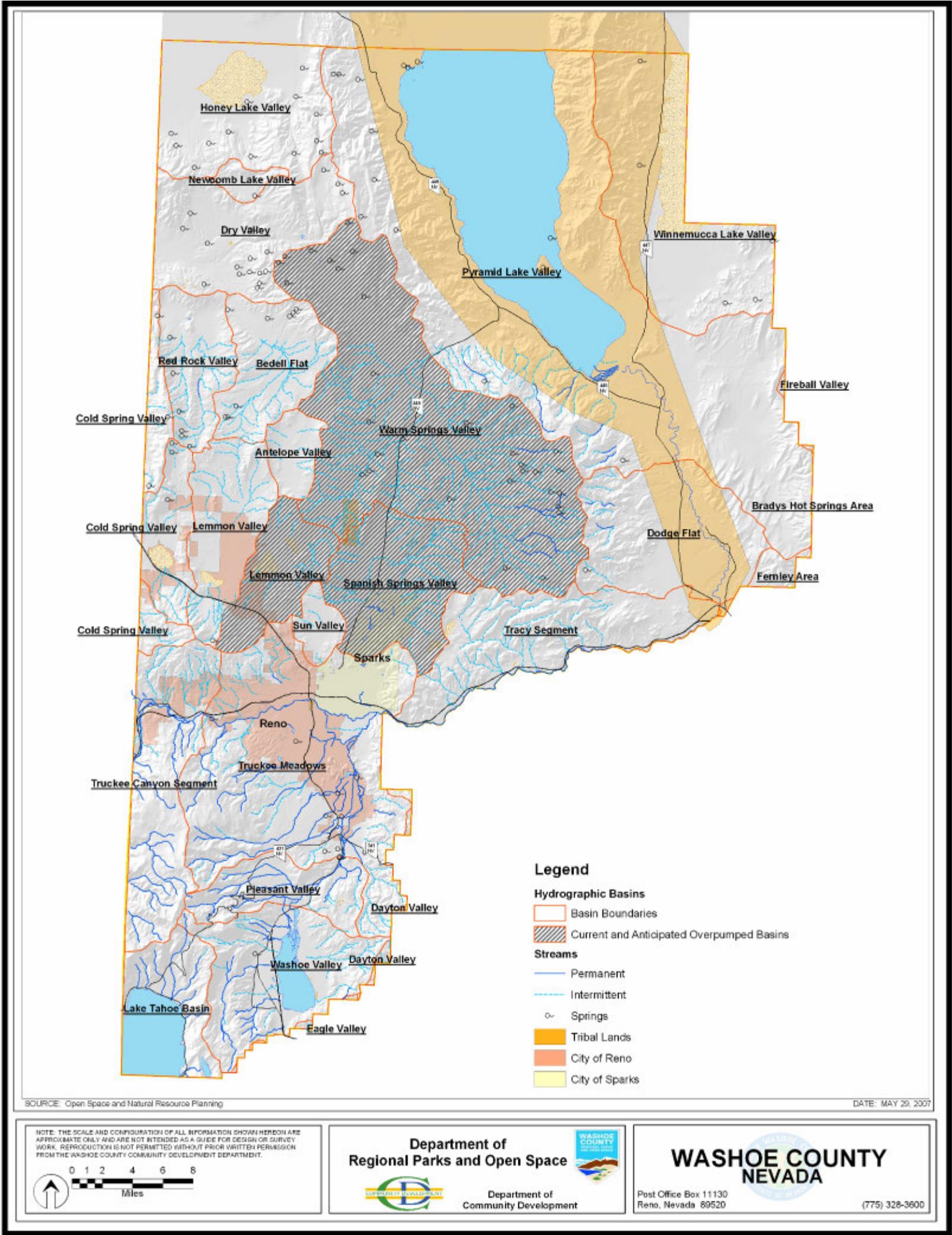


Figure 30: Current and Anticipated Overappropriated Groundwater Basins

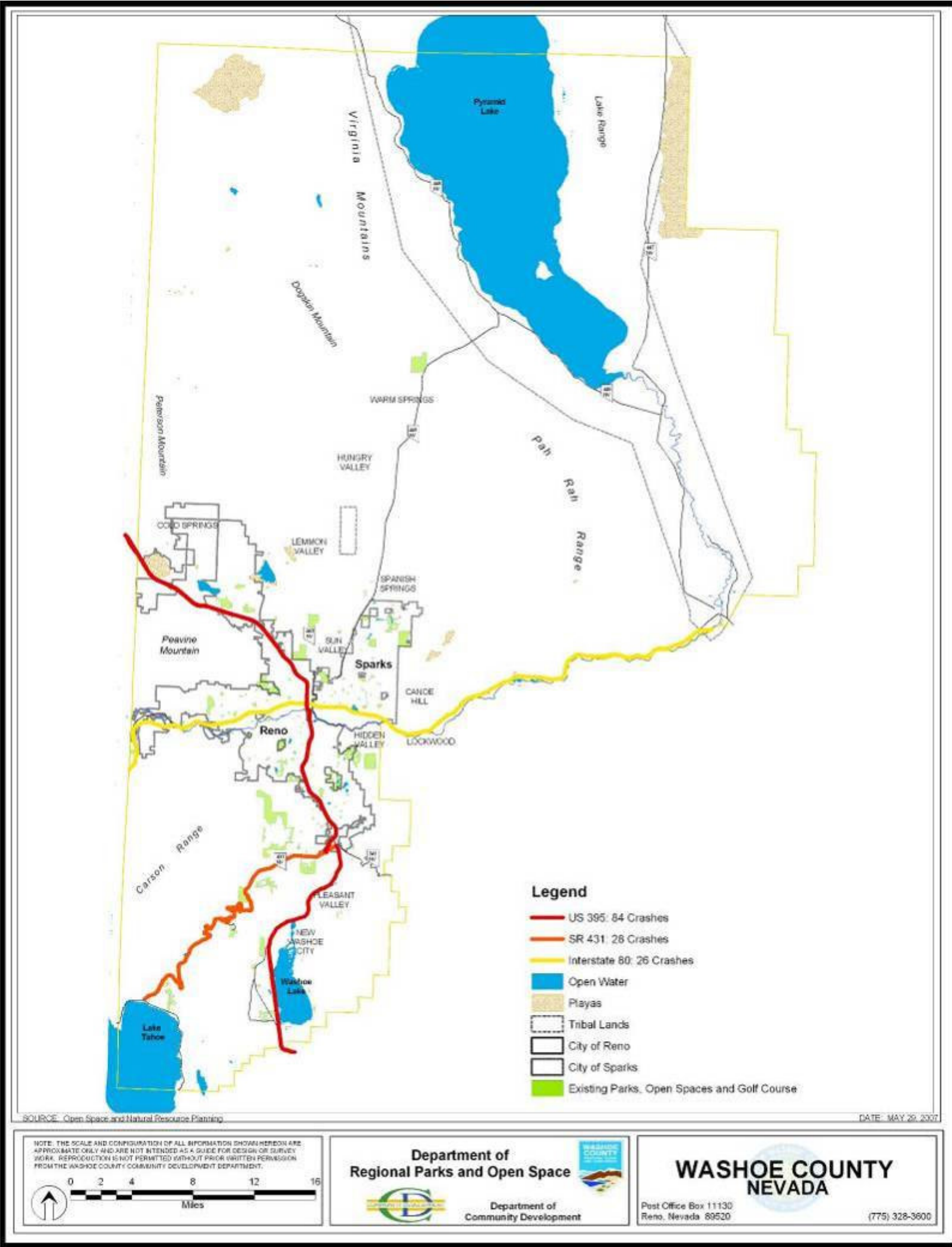


Figure 31: Highway Crashes with Wildlife, Top Three Highways 2004-2006