



Fieldcreek Truck Fill Improvements Project



Community Services Department
Utilities Division



Background

- ▶ Site is approximately 25 Acres and contains the Fieldcreek Reclaim Water System Reservoir and Pump Station, which has been in use for over 20-years as part of Washoe County reclaim water distribution system.
- ▶ Project Scope:
 - ▶ Disturbance of less than 1 acre of land
 - ▶ Provide deacceleration lane at current site entrance for maintenance and truck vehicle safety
 - ▶ Estimated to serve 10-20 truck trips per day
 - ▶ Estimated construction period of 70 working days
 - ▶ Add truck fill station with paved access at existing unpaved driveway to reservoir and pump station

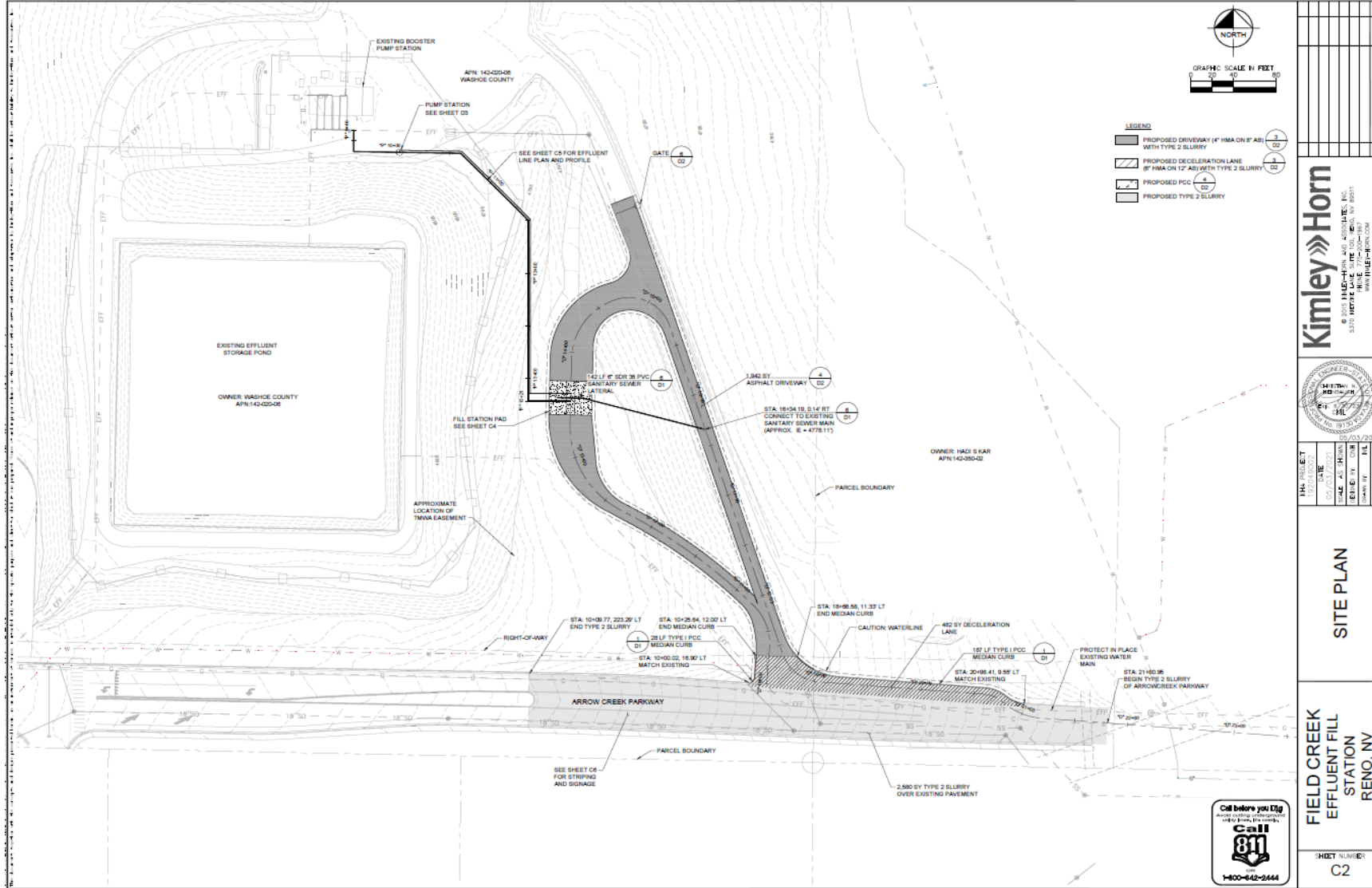
Benefits

- ▶ Add 55 trees and bushes to existing site, an increase of 20% above required landscaping
- ▶ Potentially reduce truck traffic in area by shortening distances to needed truck fills
- ▶ Reduce usage of precious potable water resources by using Class A reclaim water for construction water
- ▶ Paved driveway will reduce dust from vehicles entering site
- ▶ Deacceleration lane will provide safe refuge for operations and water trucks accessing site and existing reservoir and pump station

Questions

- ▶ Class A reclaim water is treated, filtered, and chlorinated and does not contain active viruses
- ▶ Washoe County's Class A reclaim water has been used for decades to irrigate golf courses, parks, and HOA landscaping in south Reno
- ▶ Water truck traffic should not increase; this site will provide a closer refill station for existing construction truck traffic than currently may have to drive further for refilling
- ▶ Estimated 70-working day construction duration
- ▶ Operating hours within standard City of Reno construction hours
- ▶ Staff requests:
 - ▶ Removal of 48-inch boulder/bollard barrier request around perimeter of driveway
 - ▶ Remove 1 tree/20-feet of property boundary requirement

Site Plan



Kimley»Horn

© 2003 KIMLEY-HORN AND ASSOCIATES, INC.
3150 NORTH PARK BLVD., SUITE 200
RENO, NV 89509
WWW.KHLE.COM



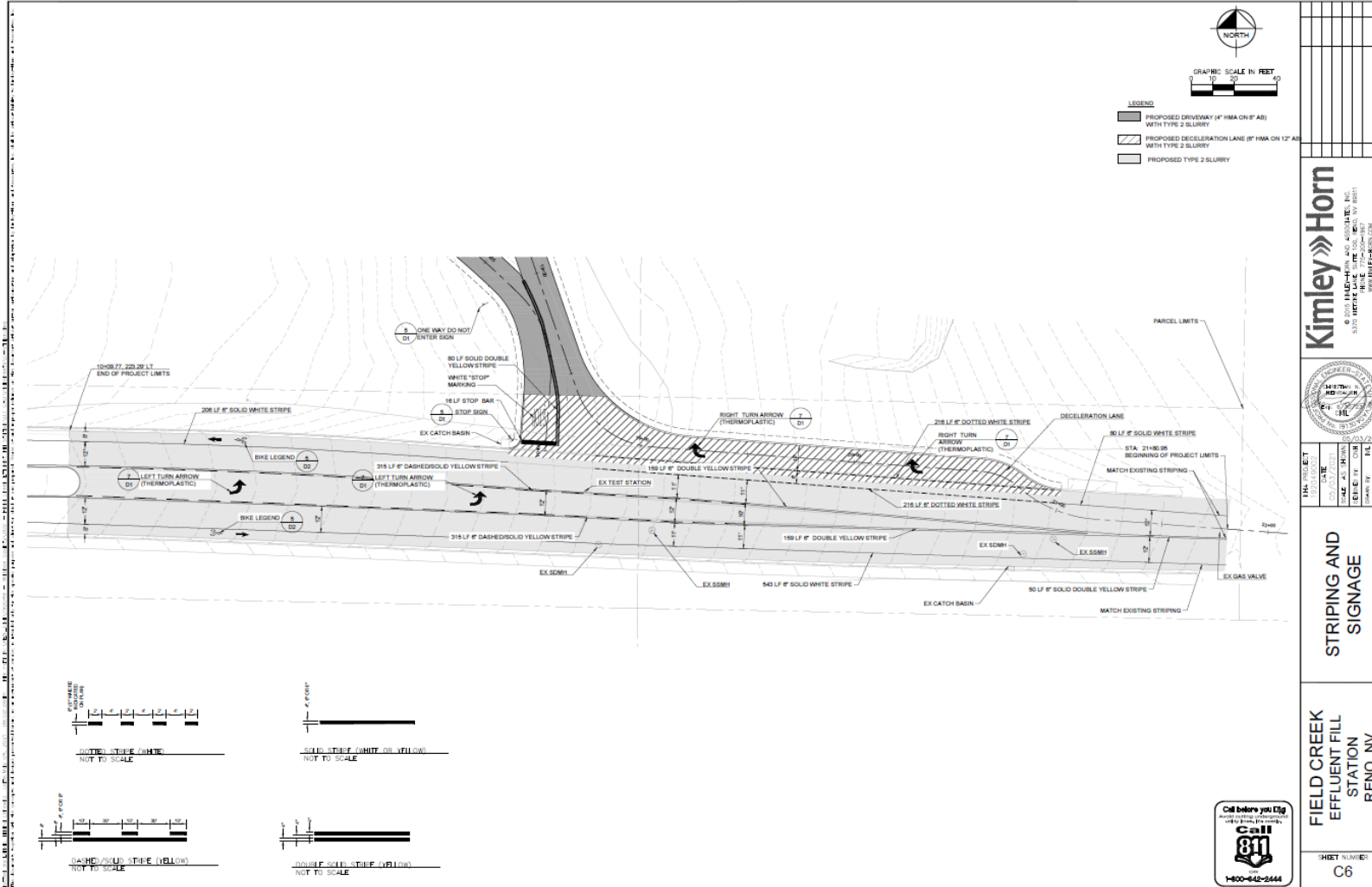
DATE	07/03/2023
BY	CH
CHECKED BY	CH
IN CHARGE	CH
SCALE	AS SHOWN
PROJECT	FIELD CREEK EFFLUENT FILL STATION
LOCATION	RENO, NV
DATE	07/03/2023

SITE PLAN

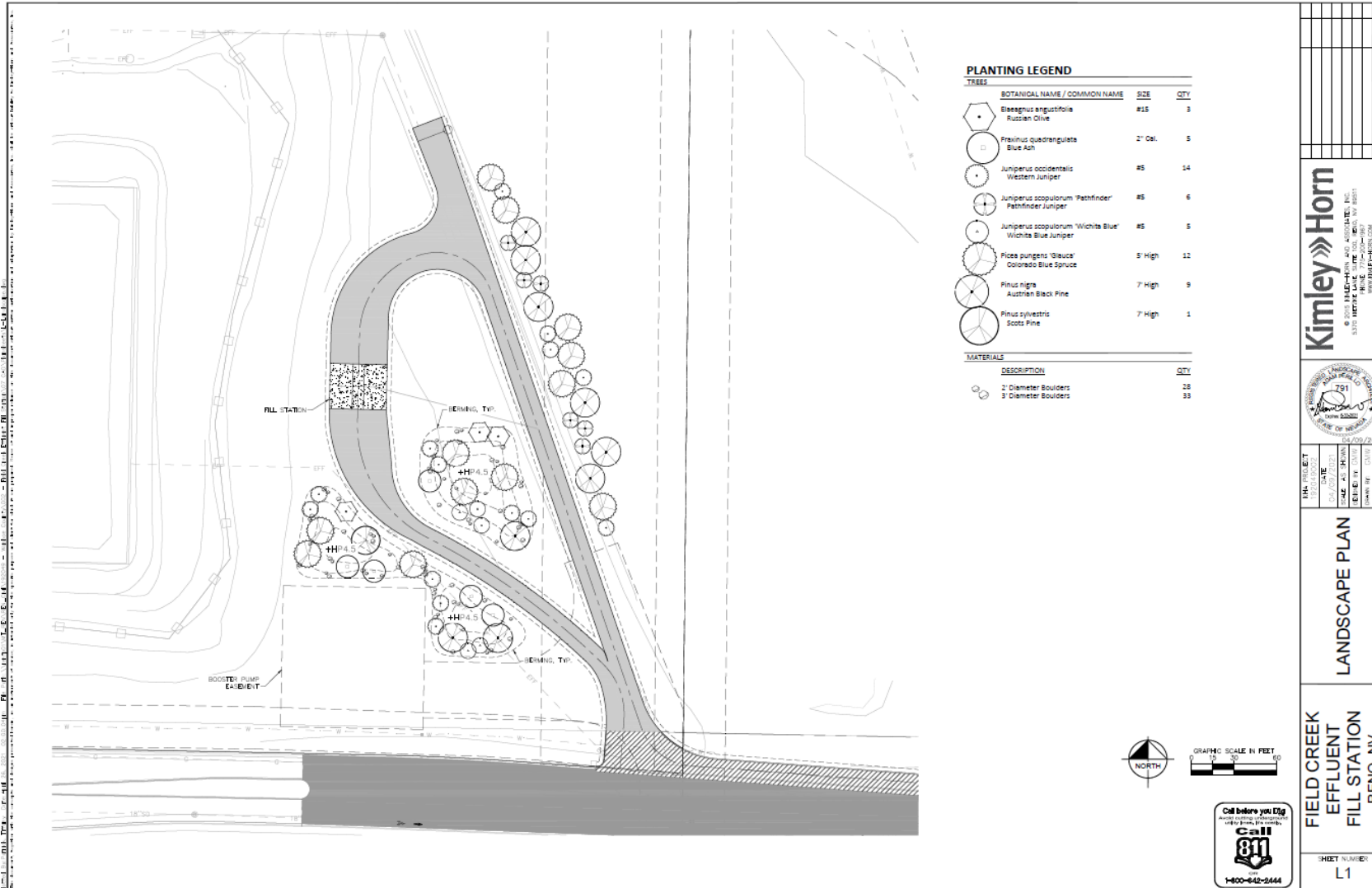
FIELD CREEK EFFLUENT FILL STATION
RENO, NV



Traffic Striping Plan



Landscaping Plan



PLANTING LEGEND

TREES

BOTANICAL NAME / COMMON NAME	SIZE	QTY
<i>Elaeagnus angustifolia</i> Russian Olive	#15	3
<i>Fraxinus quadrangula</i> Blue Ash	2" Cal.	5
<i>Juniperus occidentalis</i> Western Juniper	#5	14
<i>Juniperus scopulorum</i> 'Pathfinder' Pathfinder Juniper	#5	6
<i>Juniperus scopulorum</i> 'Wichita Blue' Wichita Blue Juniper	#5	5
<i>Picea pungens</i> 'Glauca' Colorado Blue Spruce	5' High	12
<i>Pinus nigra</i> Austrian Black Pine	7' High	9
<i>Pinus sylvestris</i> Scots Pine	7' High	1

MATERIALS

DESCRIPTION	QTY
2' Diameter Boulders	28
3' Diameter Boulders	33

Kimley»Horn
 © 1987-2011 Kimley-Horn and Associates, Inc.
 5310 University Ave., Suite 200, Reno, NV 89515
 PHONE: 775-784-8877 FAX: 775-784-8879
 WWW.KIMLEY-HORN.COM

THE PROJECT: FIELD CREEK EFFLUENT FILL STATION RENO, NV
 DATE: 04/09/2021
 SHEET NO.: L1

LANDSCAPE PLAN

FIELD CREEK EFFLUENT FILL STATION RENO, NV

SHEET NUMBER: L1