


# PLUMAS SIERRA RURAL ELECTRIC COOPERATIVE


## FORT SAGE TRANSMISSION LINE

Washoe County  
Planning Commission  
September 5, 2023



Your Touchstone Energy® Cooperative 



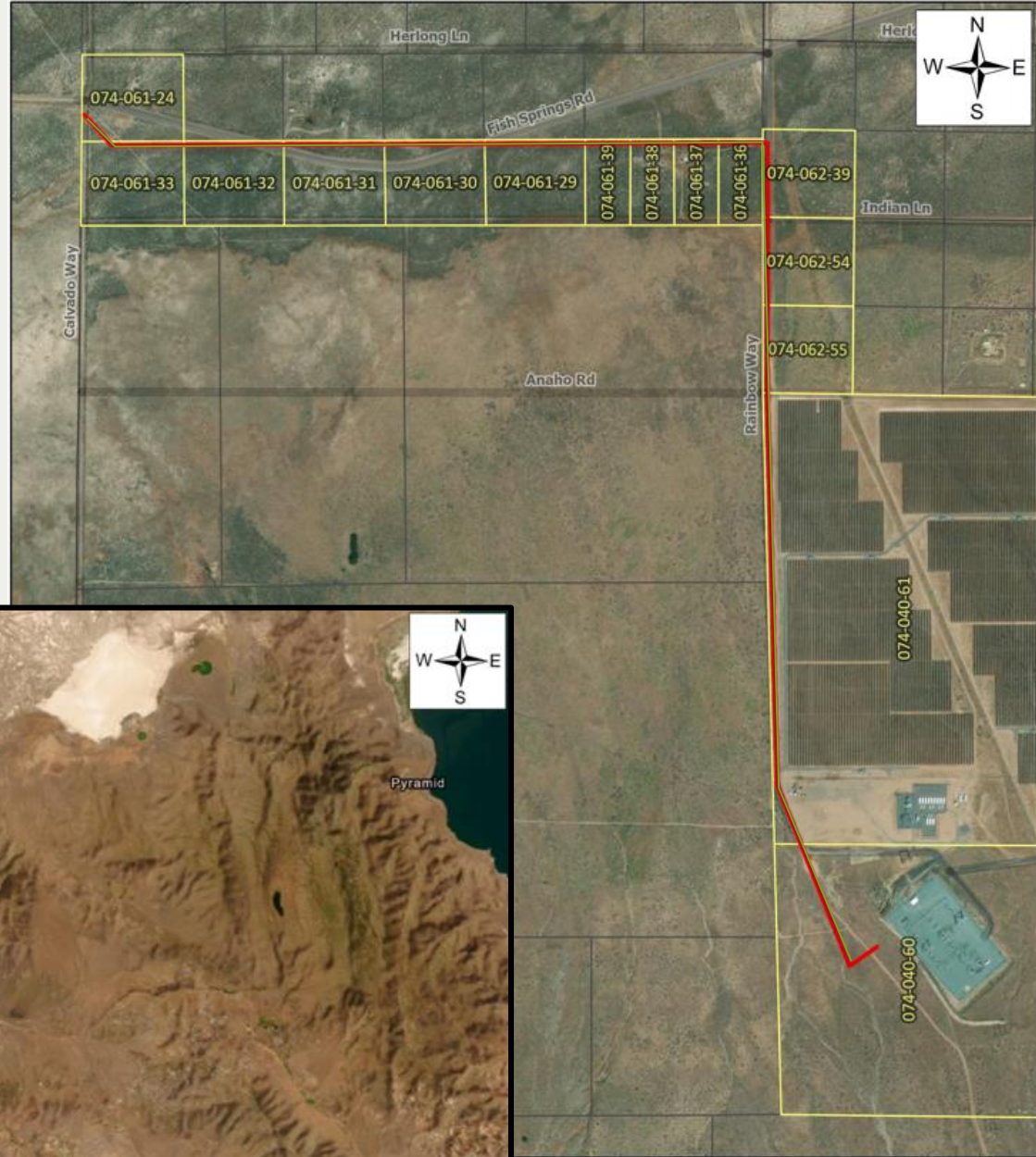
Your Touchstone Energy® Cooperative 

# WHO IS PSREC?

- Member-owned electric distribution utility
- Founded in 1937
- Provides service to +/- 8,000 members in Washoe, Plumas, Lassen, and Sierra counties
- Consumer-owned and not-for-profit

# LOCATION

Along Rainbow Way north of the existing NV Energy Fort Sage Substation, then continuing west between Indian Lane and Herlong Lane to the California State line.

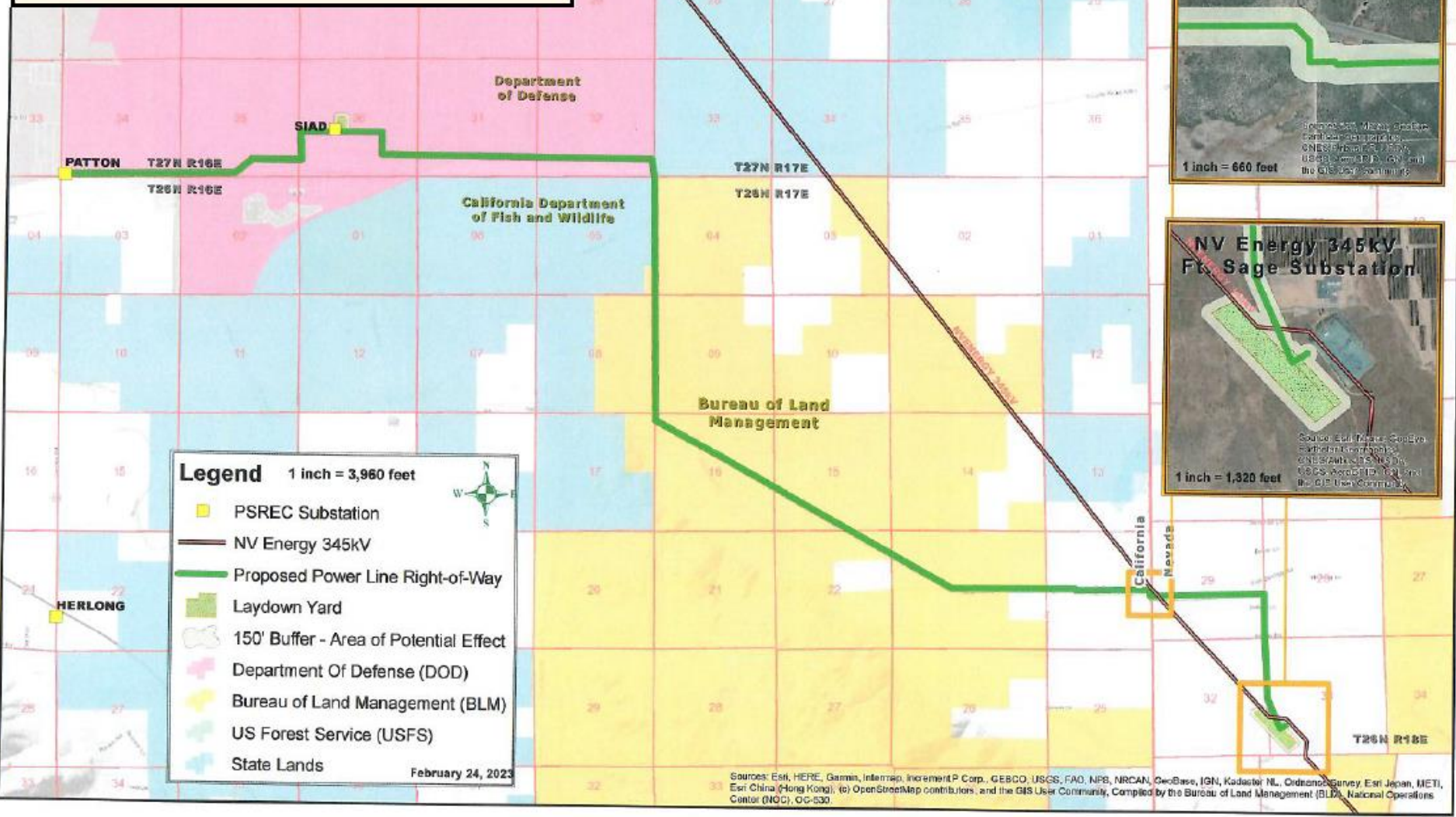


**Legend**

- Approximate Location of Transmission Line
- ▭ Parcels



# PSREC Fort Sage Transmission Constructability Map



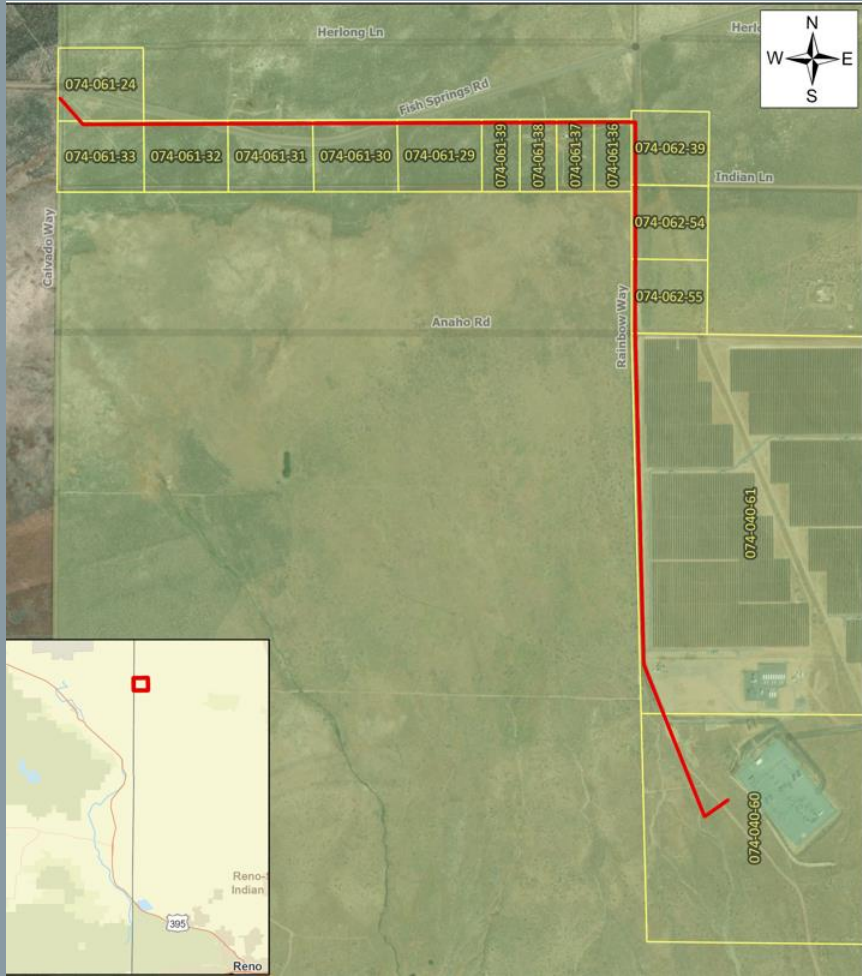
**Legend** 1 inch = 3,960 feet

- PSREC Substation
- NV Energy 345kV
- Proposed Power Line Right-of-Way
- Laydown Yard
- 150' Buffer - Area of Potential Effect
- Department Of Defense (DOD)
- Bureau of Land Management (BLM)
- US Forest Service (USFS)
- State Lands

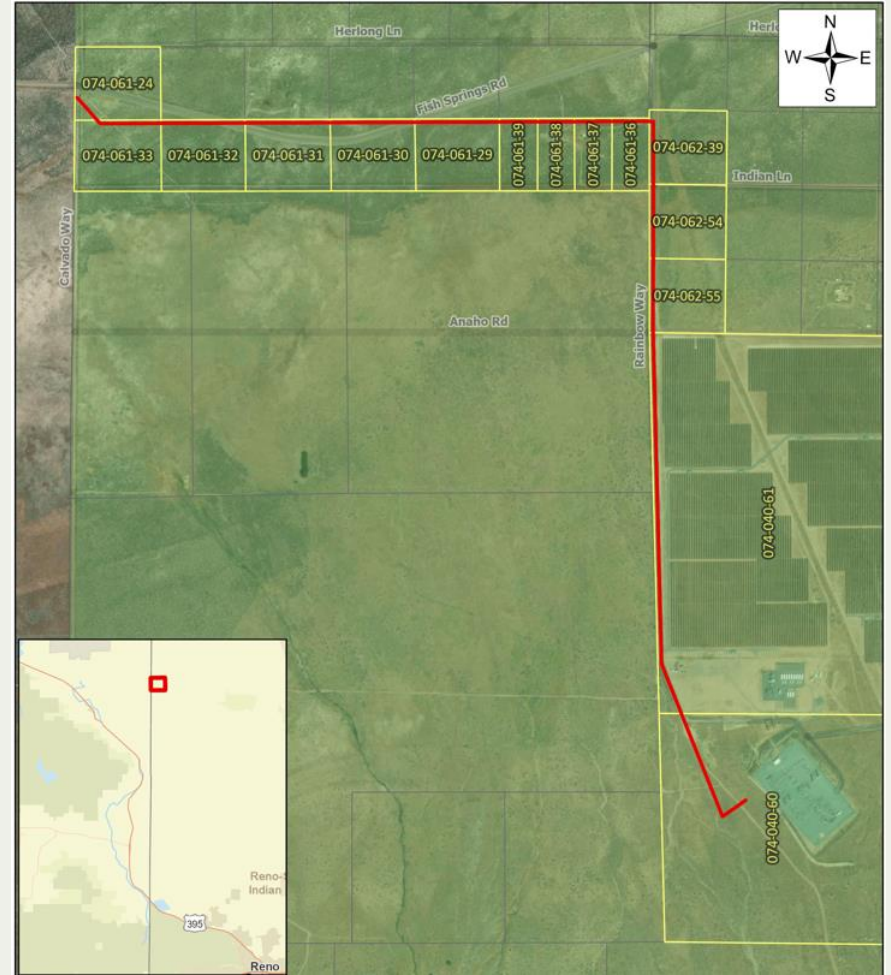
February 24, 2023

Sources: Esri, HERE, Garmin, Intermap, increment P Corp., GEBCO, USGS, FAO, NPS, NRCAN, GeoBase, IGN, Kadaster NL, Ordnance Survey, Esri Japan, METI, Esri China (Hong Kong), (c) OpenStreetMap contributors, and the GIS User Community, Compiled by the Bureau of Land Management (BLM), National Operations Center (NOC), GC-530.

# LAND USE DESIGNATIONS



Master Plan: Rural



Zoning: General Rural



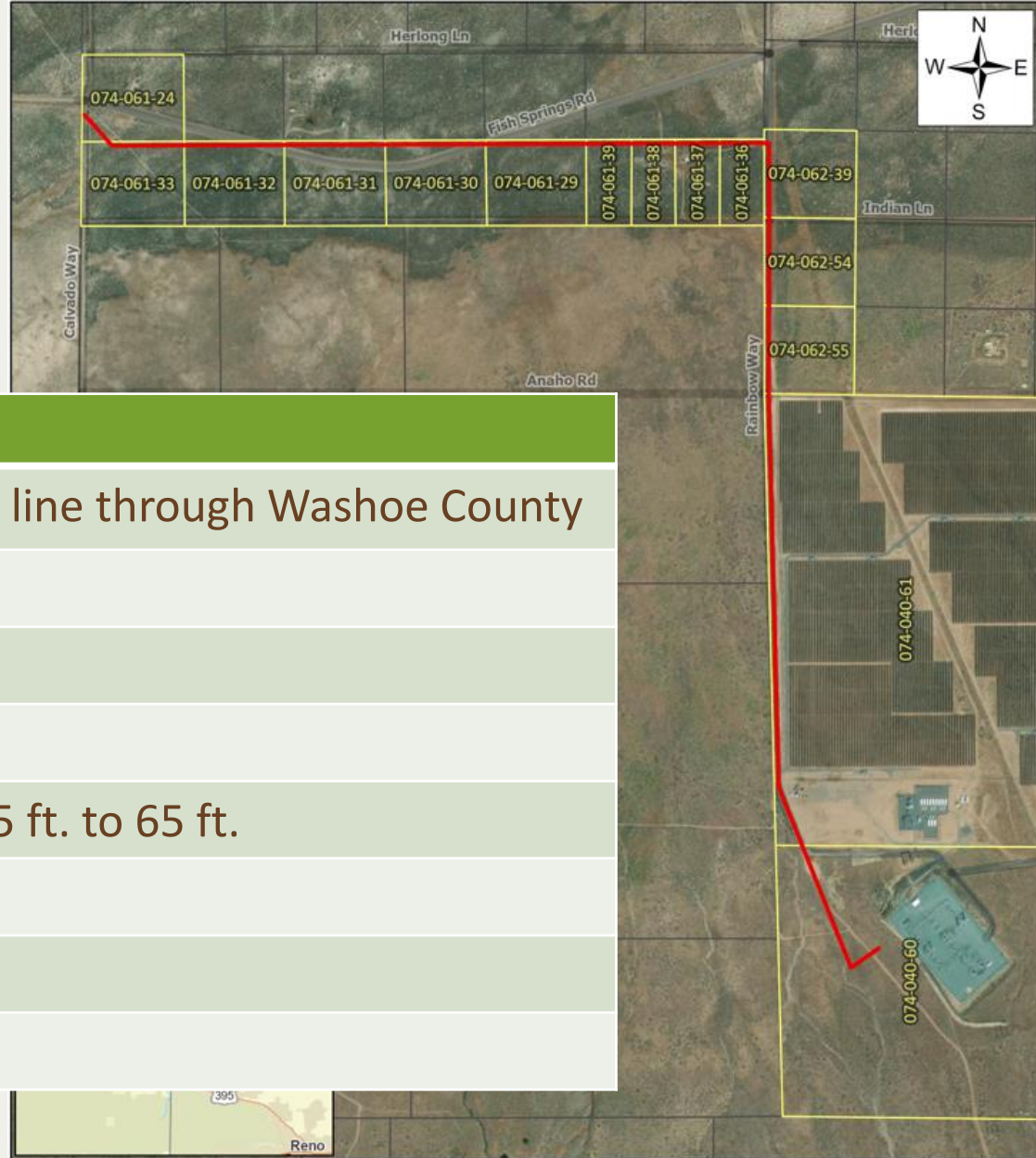
# APPLICATION



## **SPECIAL USE PERMIT**

**For “Utility Service” use in the  
Rural zoning designation**

# PROJECT



Extension of a 69 kV transmission line through Washoe County

Existing easements

+/- 35 poles

Waive landscaping requirements

Vary the maximum height from 35 ft. to 65 ft.

No major grading review

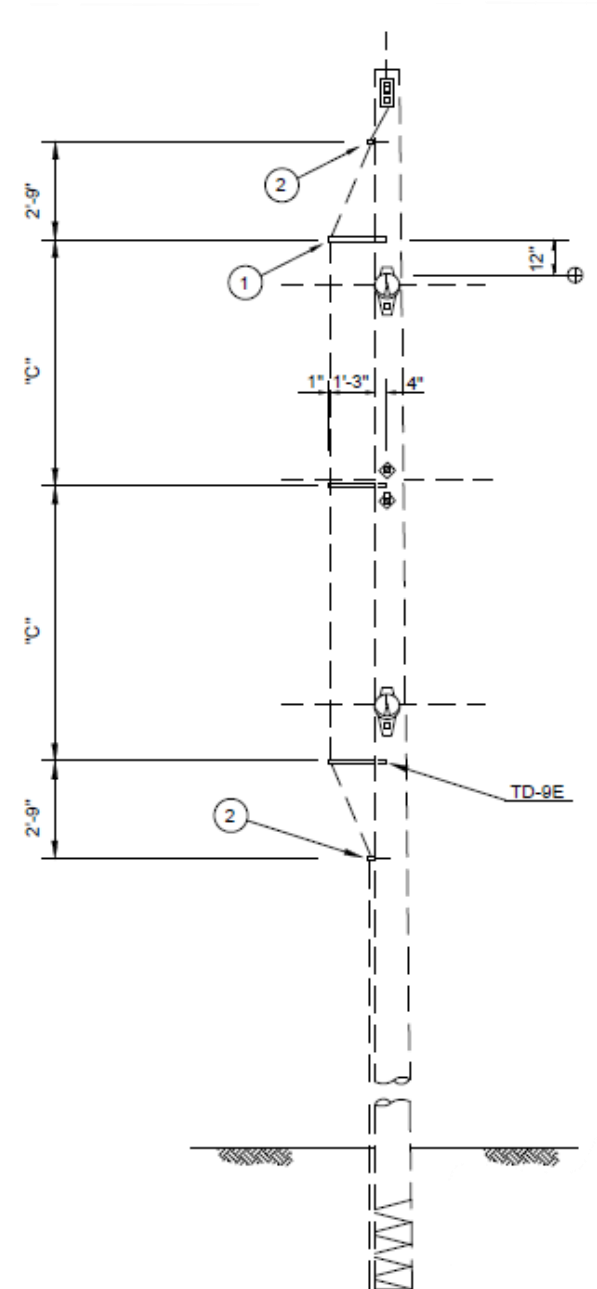
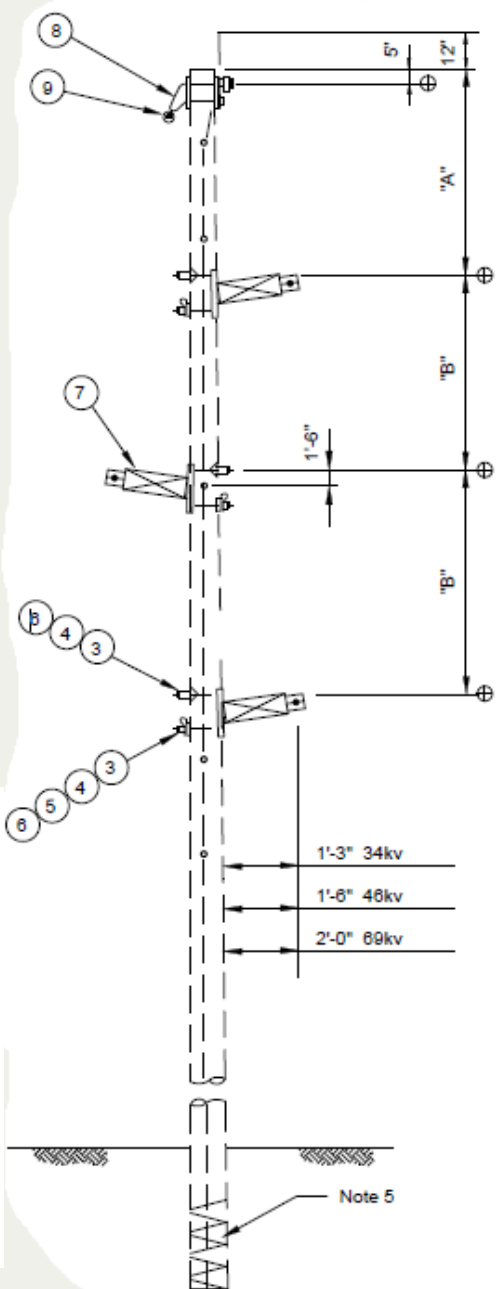
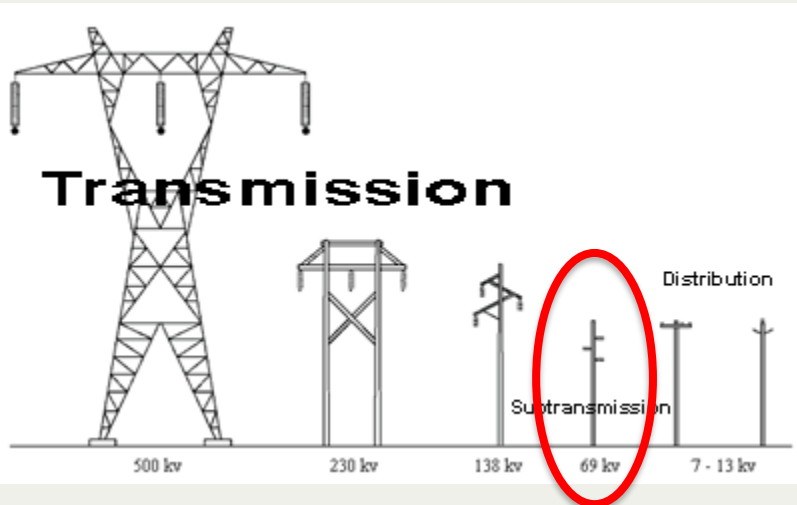
No off-street parking needed

Project of Regional Significance

## Legend

- Approximate Location of Transmission Line
- Parcels

# PROJECT





# HIGHLIGHTS

---

Increase reliability of service to +/- 450 homes of Red Rock (Washoe County).

---

Increase reliability of service from wildfire issues.

---

Assist the Sierra Army Depot achieve compliance with the 2018 National Defense Authorization Act.

---

Increase reliability of service to the Federal Correctional Institute (Herlong) and High Desert State Prison (Susanville).

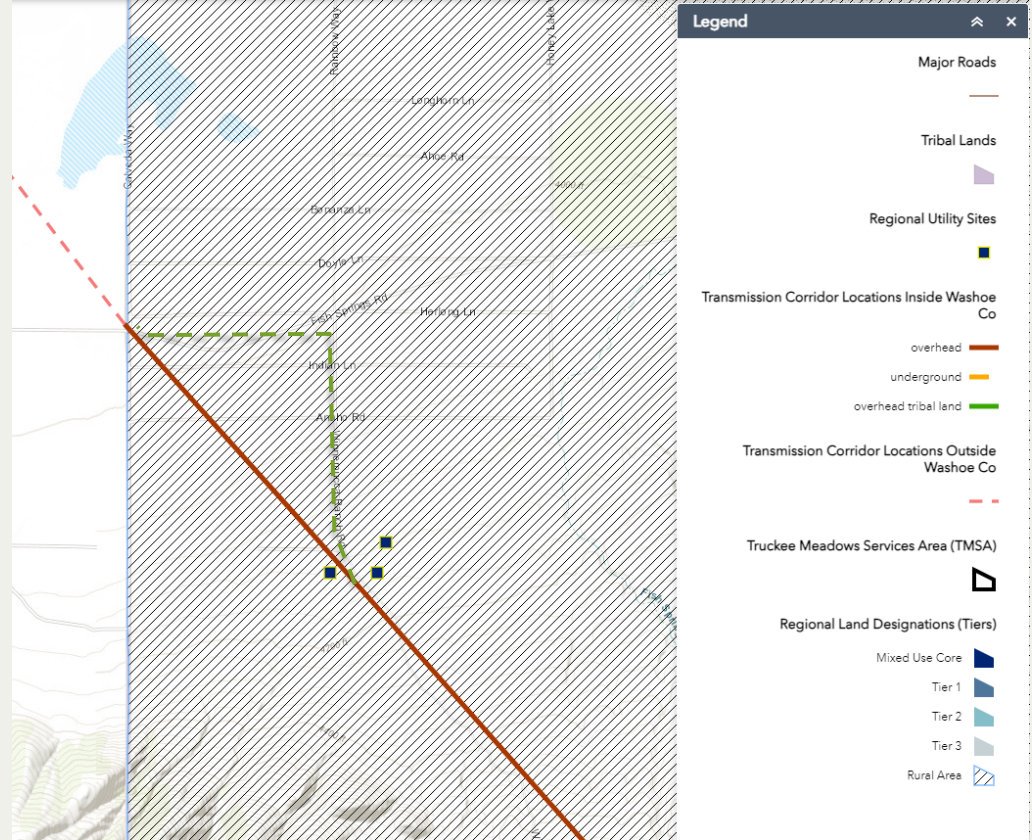
---

Working with Bureau of Land Management (BLM), Department of Defense (DoD), and Department of Justice (DoJ) as Cooperating Agencies for the CA portion of the project.

# TMRPA



- Conformance review for a transmission line that carries 60 kV or more
- Amendment to the TMRPA Regional Utility Corridor Map



- Existing corridor is an NV Energy easement
- Pole location through existing corridor could impact archaeological site
- TMRPA's initial review: no potential conformance issues

# Q&A

