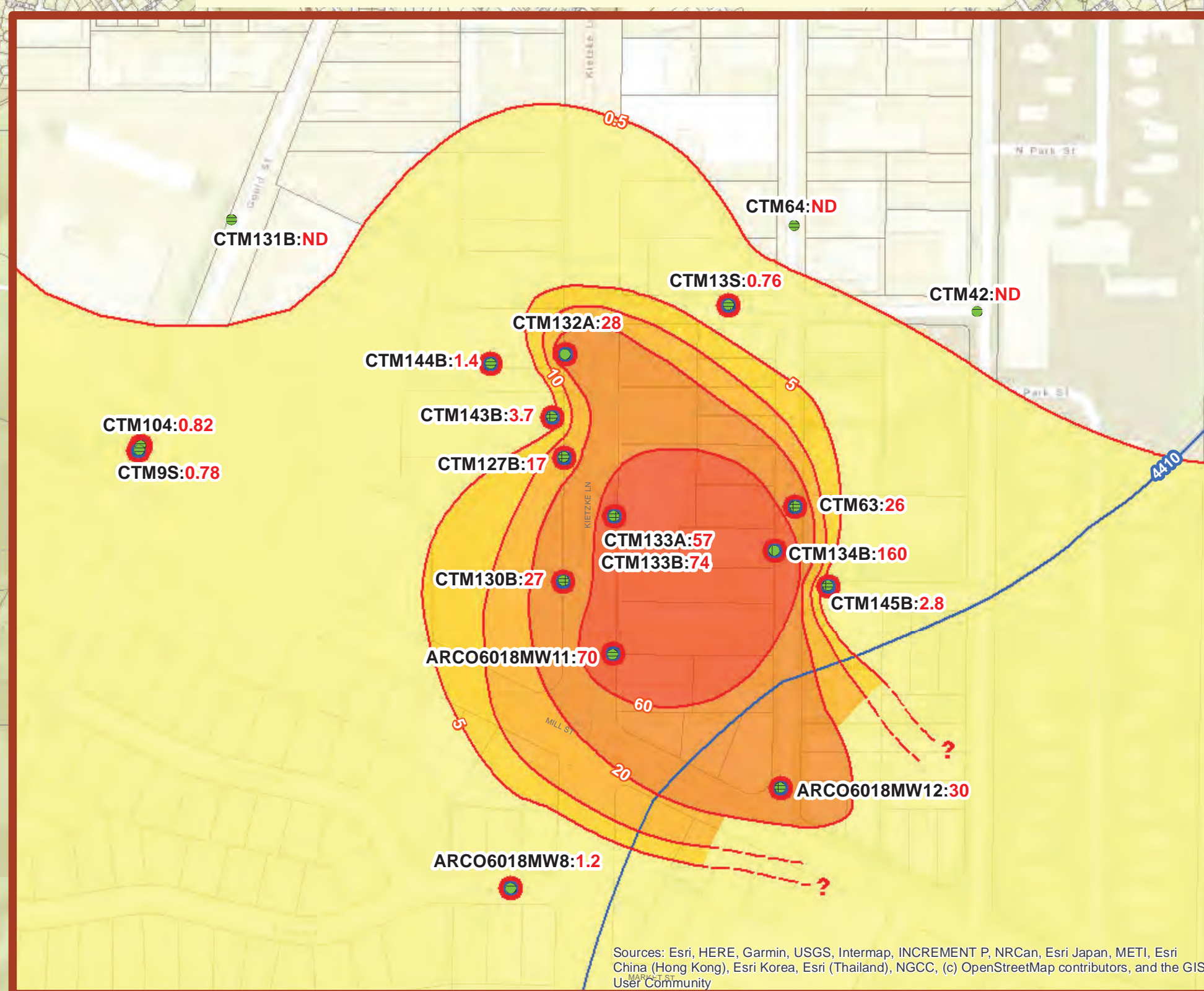
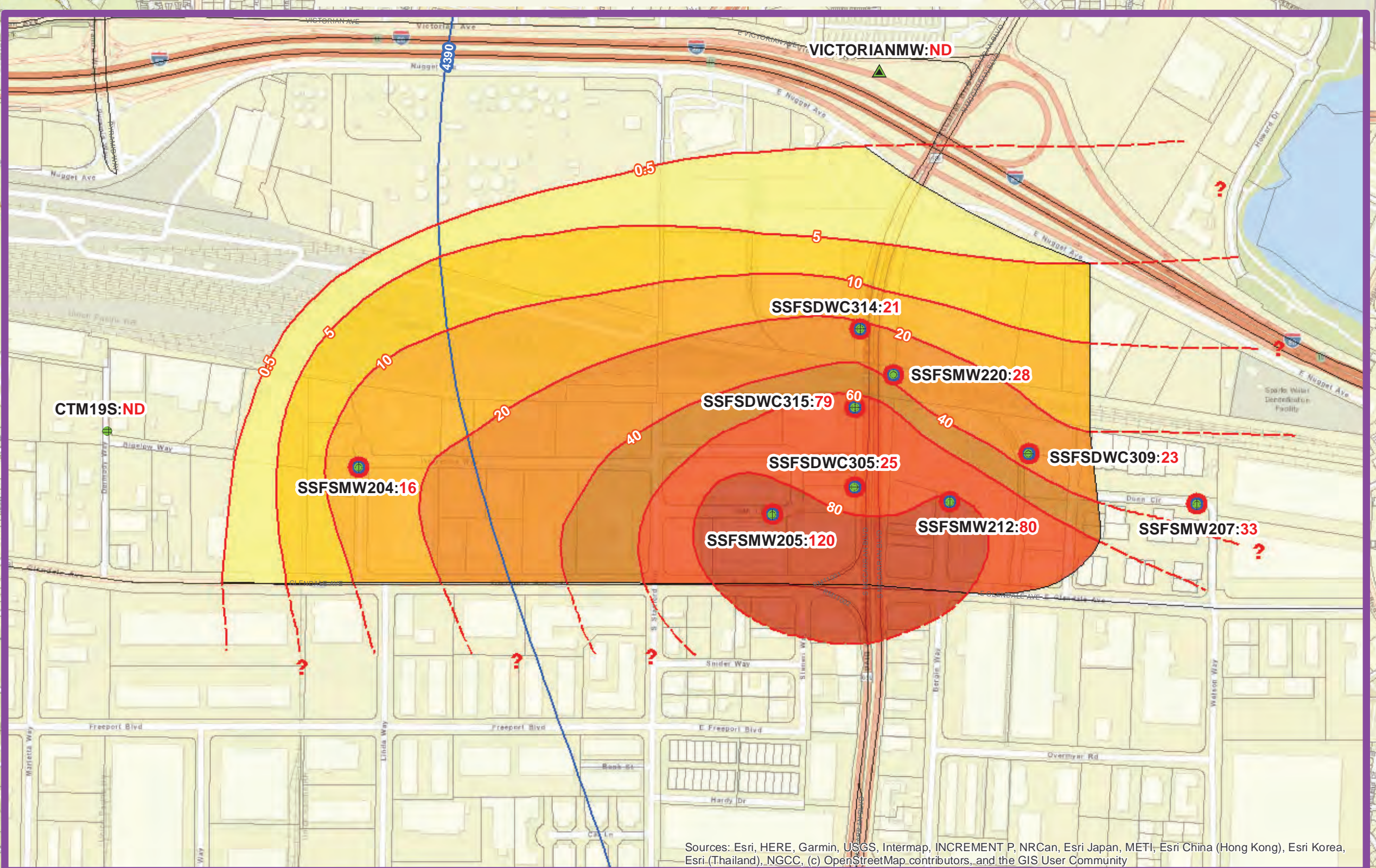


FIGURE 4.1

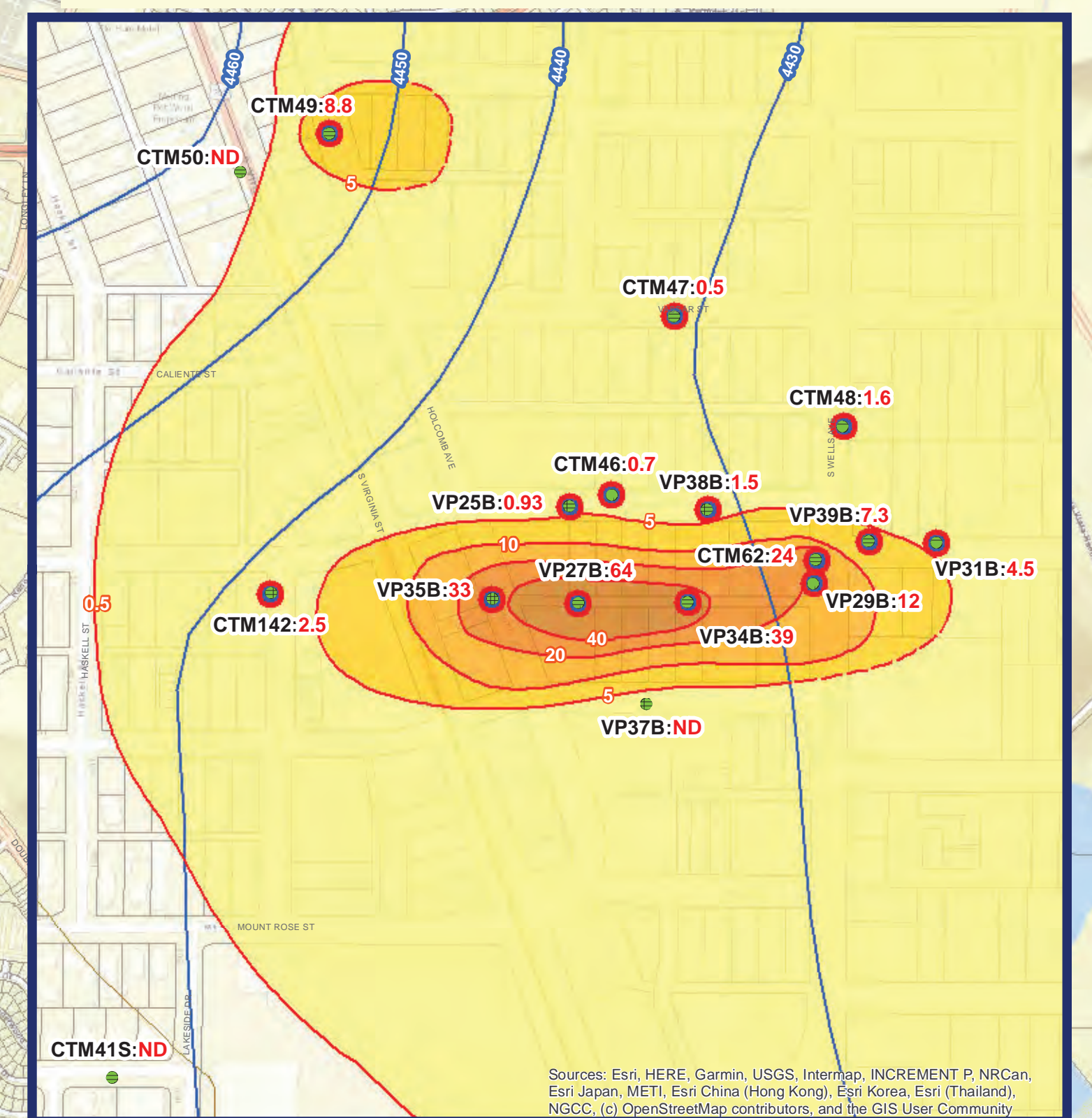
MILL / KIETZKE AREA INSET MAP



EAST SPARKS AREA INSET MAP



VASSAR / E PLUMB AREA INSET MAP



Water Level and PCE Concentration in Shallow Zone Wells April-June 2021

- | | | | | | | | |
|--|--|-------------|-----------|----------|-----------|-----------|-----------|
| <p>WELL TYPE</p> <ul style="list-style-type: none"> ● PRODUCTION WELL (PCE TREATED) - TMWA ○ PRODUCTION WELL ● DOMESTIC WELL ● MONITORING WELL - OTHER ▲ MONITORING WELL - TMWA ● MONITORING WELL - WCCSD — WATER LEVEL ELEVATION CONTOURS → GROUNDWATER FLOW DIRECTION — CREEK — DITCH | <p>SAMPLE RESULTS</p> <ul style="list-style-type: none"> ● DETECTED AT GREATER THAN THE 0.50 µg/L PCE REPORTING LIMIT ○ VALUES PLOTTED ONLY FOR WELLS THAT WERE SAMPLED. DATA FROM PRODUCTION WELLS ARE FROM SAMPLES COLLECTED UNDER PUMPING CONDITIONS UNLESS OTHERWISE STATED. VALUES PLOTTED THAT ARE LESS THAN 0.50 µg/L ARE EITHER NOTED AS NON-DETECT (ND) OR INDICATE A VALUE PROVIDED BY THE LAB. ND BELOW ANALYTICAL REPORTING LIMIT ? INSUFFICIENT DATA FOR ESTIMATING LATERAL EXTENT OF CONTAMINATION ○ PCE CONCENTRATION AREAS — PCE CONCENTRATION CONTOURS --- PCE CONCENTRATION CONTOURS - INFERRED <p>Actual lateral extent of contamination uncertain.</p> <table border="0"> <tr> <td>> 0.05 ug/L</td> <td>> 20 ug/L</td> </tr> <tr> <td>> 5 ug/L</td> <td>> 40 ug/L</td> </tr> <tr> <td>> 10 ug/L</td> <td>> 80 ug/L</td> </tr> </table> | > 0.05 ug/L | > 20 ug/L | > 5 ug/L | > 40 ug/L | > 10 ug/L | > 80 ug/L |
| > 0.05 ug/L | > 20 ug/L | | | | | | |
| > 5 ug/L | > 40 ug/L | | | | | | |
| > 10 ug/L | > 80 ug/L | | | | | | |

NOTES:
 The scale and configuration of all information shown herein are approximate only and are not intended as a guide for design or survey work. Reproduction is not permitted without prior written permission from the Washoe County Community Services Department.
 PCE/CE contours reflect data from the time range noted. Where such data were not collected, the most recent data for those locations were used. Contours may not represent the exact extent of contamination in groundwater. Well elevations are dynamic and may not reflect actual piezometric surface over the entire time range noted.

Central Truckee Meadows Remediation District Program

Sources: Esri, HERE, Garmin, USGS, Intermap, INCREMENT P, NRCan, Esri Japan, METI, Esri (Shanghai), Esri Korea, Esri (Thailand), NGIS, (c) OpenStreetMap contributors, and the GIS User Community

Sources: Esri, HERE, Garmin, USGS, Intermap, INCREMENT P, NRCan, Esri Japan, METI, Esri (Shanghai), Esri Korea, Esri (Thailand), NGIS, (c) OpenStreetMap contributors, and the GIS User Community

Sources: Esri, HERE, Garmin, USGS, Intermap, INCREMENT P, NRCan, Esri Japan, METI, Esri (Shanghai), Esri Korea, Esri (Thailand), NGIS, (c) OpenStreetMap contributors, and the GIS User Community