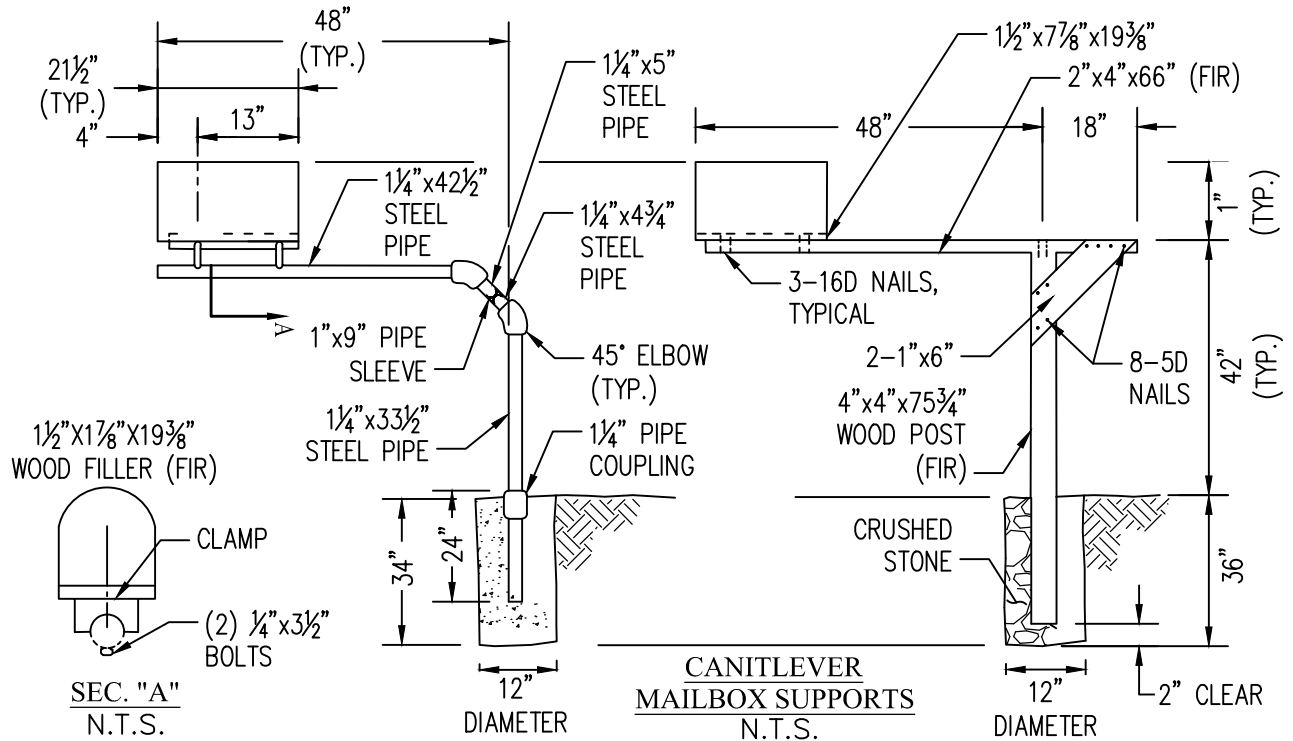


SPACING FOR MULTIPLE POST INSTALLATION
N.T.S.

SINGLE & DOUBLE MAILBOX ASSEMBLIES
N.T.S.

NOTES:

1. CALL "USA UNDERGROUND ALERT" PRIOR TO CONSTRUCTION.
2. THE POST-TO-BOX ATTACHMENT SHOULD BE OF SUFFICIENT STRENGTH TO PREVENT THE BOX FROM SEPARATING FROM THE POST TOP IF THE INSTALLATION IS STRUCK BY A VEHICLE.



SEC. "A"
N.T.S.

CANITILEVER MAILBOX SUPPORTS
N.T.S.

DATE	REVISIONS



STANDARD DETAILS FOR PUBLIC WORKS CONSTRUCTION

MAILBOXES

SECTION NUMBER: 400
DRAWING NUMBER: W-410A
DATE: 2/21/2022